



## Rabbit Anti-THRA1+2 antibody

SL6222R

<b>Product Name:</b>	THRA1+2
<b>Chinese Name:</b>	甲状腺激素受体 $\alpha$ 1+ $\alpha$ 2抗体
<b>Alias:</b>	Thyroid Hormone Receptor alpha 1+2; THRA1+THRA2; AR7; Avian erythroblastic leukemia viral (v erb a) oncogene homolog; c ERBA 1; c ERBA ALPHA 2; C erbA alpha; c-erbA-1; C-erbA-alpha; cerbA protein; cerbAalpha; EAR 7; EAR 7.1; EAR 7.2; EAR-7; EAR7; ERB T 1; ERBA 1; ERBA ALPHA; ERBA; ERBA related 7; ERBA1; Erythroblastic leukemia viral (v erb a) oncogene homolog avian; NR1A 1; Nr1a1; Nuclear receptor subfamily 1 group A member 1; Oncogene ERBA; THA_HUMAN; THRA; Thra1; Thra2; Thyroid hormone receptor alpha 1 (avian erythroblastic leukemia viral (verba) oncogene homolog 1 formerly ERBA1); Thyroid hormone receptor alpha 1; Thyroid hormone receptor alpha 2; Thyroid hormone receptor alpha; TR alpha 1; TR alpha 2; Tra1; Triiodothyronine receptor; V-erbA-related protein 7.
<b>Organism Species:</b>	Rabbit
<b>Clonality:</b>	Polyclonal
<b>React Species:</b>	Human, Mouse, Rat, Chicken, Dog, Pig, Cow, Zebrafish, Sheep, Cat,
<b>Applications:</b>	WB=1:500-2000ELISA=1:500-1000IHC-P=1:400-800IHC-F=1:400-800IF=1:100-500 (Paraffin sections need antigen repair) not yet tested in other applications. optimal dilutions/concentrations should be determined by the end user.
<b>Molecular weight:</b>	55kDa
<b>Cellular localization:</b>	The nucleus
<b>Form:</b>	Lyophilized or Liquid
<b>Concentration:</b>	1mg/ml
<b>immunogen:</b>	KLH conjugated synthetic peptide derived from human THRA1 and THRA2:101-200/490
<b>Lsotype:</b>	IgG
<b>Purification:</b>	affinity purified by Protein A
<b>Storage Buffer:</b>	0.01M TBS(pH7.4) with 1% BSA, 0.03% Proclin300 and 50% Glycerol.
<b>Storage:</b>	Store at -20 °C for one year. Avoid repeated freeze/thaw cycles. The lyophilized antibody is stable at room temperature for at least one month and for greater than a year

	when kept at -20°C. When reconstituted in sterile pH 7.4 0.01M PBS or diluent of antibody the antibody is stable for at least two weeks at 2-4 °C.
<b>PubMed:</b>	<a href="#">PubMed</a>
<b>Product Detail:</b>	<p>The protein encoded by this gene is a nuclear hormone receptor for triiodothyronine. It is one of the several receptors for thyroid hormone, and has been shown to mediate the biological activities of thyroid hormone. Knockout studies in mice suggest that the different receptors, while having certain extent of redundancy, may mediate different functions of thyroid hormone. Alternatively spliced transcript variants encoding distinct isoforms have been reported. [provided by RefSeq, Jul 2008].</p> <p><b>Function:</b> Nuclear hormone receptor. High affinity receptor for triiodothyronine.</p> <p><b>Subunit:</b> Interacts with NCOA3 and NCOA6 coactivators, leading to a strong increase of transcription of target genes. Probably interacts with SFPQ. Interacts with C1D (By similarity). Interacts with AKAP13.</p> <p><b>Subcellular Location:</b> Nucleus.</p> <p><b>DISEASE:</b> Defects in THRA are the cause of congenital hypothyroidism non-goitrous type 6 (CHNG6) [MIM:614450]. A disease characterized by growth retardation, developmental retardation, skeletal dysplasia, borderline low thyroxine levels and high triiodothyronine levels. There is differential sensitivity to thyroid hormone action, with retention of hormone responsiveness in the hypothalamic pituitary axis and liver but skeletal, gastrointestinal, and myocardial resistance.</p> <p><b>Similarity:</b> Belongs to the nuclear hormone receptor family. NR1 subfamily. Contains 1 nuclear receptor DNA-binding domain.</p> <p><b>SWISS:</b> P10827</p> <p><b>Gene ID:</b> 7067</p> <p><b>Database links:</b></p> <p><a href="#">Entrez Gene: 7067</a>Human</p> <p><a href="#">Entrez Gene: 21833</a>Mouse</p> <p><a href="#">Entrez Gene: 81812</a>Rat</p>

[Omim: 190120](#)Human

[SwissProt: P10827](#)Human

[SwissProt: P63058](#)Mouse

[SwissProt: O97716](#)Pig

[SwissProt: P63059](#)Rat

[Unigene: 724](#)Human

[Unigene: 265917](#)Mouse

[Unigene: 442648](#)Mouse

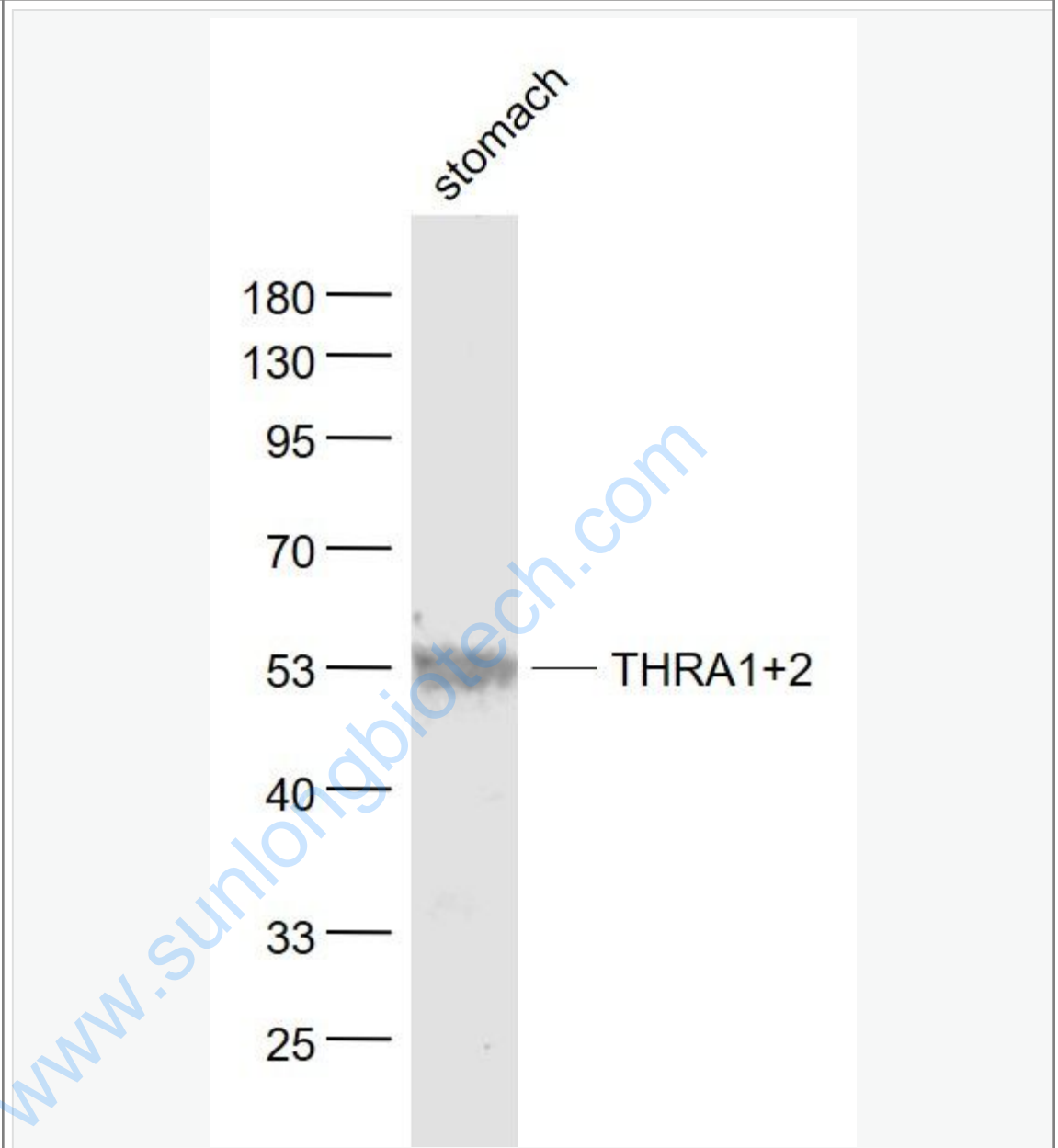
[Unigene: 11307](#)Rat

**Important Note:**

This product as supplied is intended for research use only, not for use in human, therapeutic or diagnostic applications.

[www.sunlongbiotech.com](http://www.sunlongbiotech.com)

Picture:



Sample:

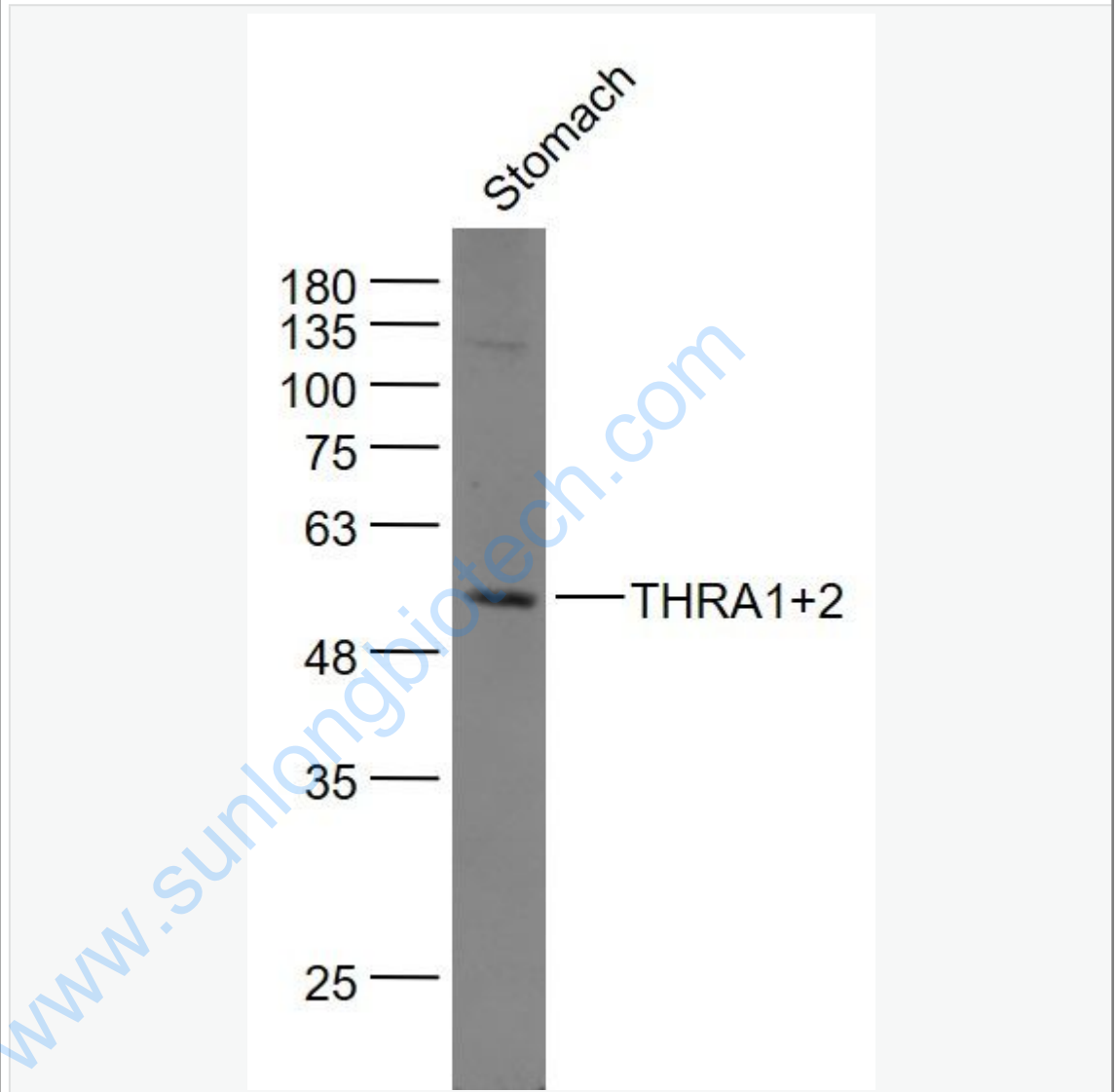
Stomach (Mouse) Lysate at 40 ug

Primary: Anti- THRA1+2 (SL6222R) at 1/1000 dilution

Secondary: IRDye800CW Goat Anti-Rabbit IgG at 1/20000 dilution

Predicted band size: 55 kD

Observed band size: 53 kD



Sample:

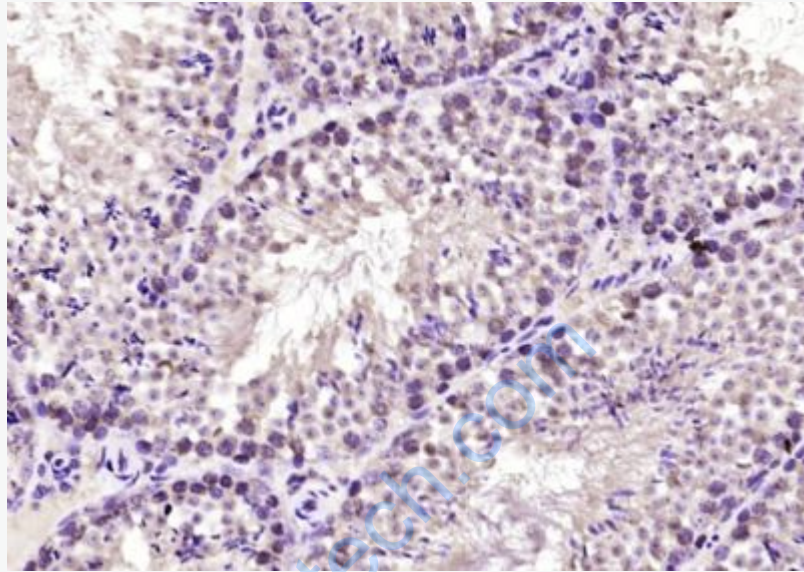
Stomach (Mouse) Lysate at 40 ug

Primary: Anti-THRA1+2 (SL6222R) at 1/1000 dilution

Secondary: IRDye800CW Goat Anti-Rabbit IgG at 1/20000 dilution

Predicted band size: 55 kD

Observed band size: 55 kD



Paraformaldehyde-fixed, paraffin embedded (mouse testis tissue); Antigen retrieval by boiling in sodium citrate buffer (pH6.0) for 15min; Block endogenous peroxidase by 3% hydrogen peroxide for 20 minutes; Blocking buffer (normal goat serum) at 37°C for 30min; Antibody incubation with (THRA1+2) Polyclonal Antibody, Unconjugated (SL6222R) at 1:400 overnight at 4°C, followed by operating according to SP Kit(Rabbit) (sp-0023) instructions and DAB staining.