



## Rabbit Anti-LC3C antibody

SL6230R

<b>Product Name:</b>	LC3C
<b>Chinese Name:</b>	微管相关蛋白轻链3C抗体
<b>Alias:</b>	LC3 like protein 2; MAP1 light chain 3 like protein 3; Microtubule-associated proteins 1A/1B light chain 3C; Autophagy-related protein LC3 C; Autophagy-related ubiquitin-like modifier LC3 C; MAP1 light chain 3-like protein 3; MAP1A/MAP1B light chain 3 C; MAP1A/MAP1B LC3 C; Microtubule-associated protein 1 light chain 3 gamma; MAP1LC3C; MLP3C HUMAN.
<b>Organism Species:</b>	Rabbit
<b>Clonality:</b>	Polyclonal
<b>React Species:</b>	Human,Rat,Chicken,Dog,Pig,Cow,Danio rerio
<b>Applications:</b>	WB=1:500-2000ELISA=1:500-1000IHC-P=1:400-800IHC-F=1:400-800IF=1:100-500 (Paraffin sections need antigen repair) not yet tested in other applications. optimal dilutions/concentrations should be determined by the end user.
<b>Molecular weight:</b>	16kDa
<b>Cellular localization:</b>	cytoplasmicThe cell membrane
<b>Form:</b>	Lyophilized or Liquid
<b>Concentration:</b>	1mg/ml
<b>immunogen:</b>	KLH conjugated synthetic peptide derived from human LC3C:31-126/147
<b>Lsotype:</b>	IgG
<b>Purification:</b>	affinity purified by Protein A
<b>Storage Buffer:</b>	0.01M TBS(pH7.4) with 1% BSA, 0.03% Proclin300 and 50% Glycerol.
<b>Storage:</b>	Store at -20 °C for one year. Avoid repeated freeze/thaw cycles. The lyophilized antibody is stable at room temperature for at least one month and for greater than a year when kept at -20°C. When reconstituted in sterile pH 7.4 0.01M PBS or diluent of antibody the antibody is stable for at least two weeks at 2-4 °C.
<b>PubMed:</b>	<a href="#">PubMed</a>
<b>Product Detail:</b>	A major contributor to cellular homeostasis is the ability of the cell to strike a balance between the formation and degradation/removal of its cellular components. This process of internal cellular turn-over is called autophagy (self-eating), and is facilitated by a

pathway of around 16 interacting proteins in the human. LC3, a ubiquitin-like modifier protein, is the human homolog of yeast Apg8 and is involved in the formation of autophagosomal vacuoles, called autophagosomes. There are three isoforms of human LC3 (named MAP1LC3A, MAP1LC3B, and MAP1LC3C), which exhibit different tissue distributions. A disruption to the autophagic process is now associated with the progression of several cancers, neurodegenerative disorders and cardiac pathologies, where LC3 is widely employed as a marker for autophagy.

**Function:**

Probably involved in formation of autophagosomal vacuoles (autophagosomes).

**Subunit:**

3 different light chains, LC1, LC2 and LC3, can associate with MAP1A and MAP1B proteins.

**Subcellular Location:**

Cytoplasm, cytoskeleton. Endomembrane system; Lipid-anchor. Cytoplasmic vesicle, autophagosome membrane; Lipid-anchor.

**Tissue Specificity:**

Most abundant in placenta, lung and ovary.

**Similarity:**

Belongs to the MAP1 LC3 family.

**SWISS:**

Q9BXW4

**Gene ID:**

440738

**Database links:**

[Entrez Gene: 440738](#)Human

[Omin: 609605](#)Human

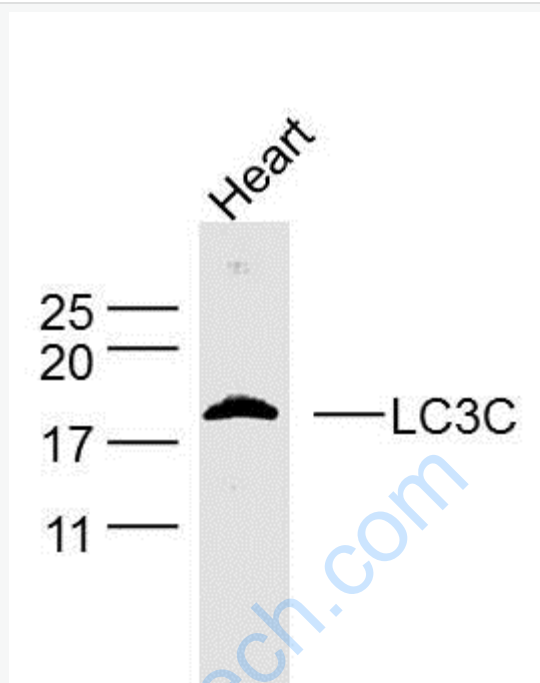
[SwissProt: Q9BXW4](#)Human

[Unigene: 534971](#)Human

**Important Note:**

This product as supplied is intended for research use only, not for use in human, therapeutic or diagnostic applications.

Picture:



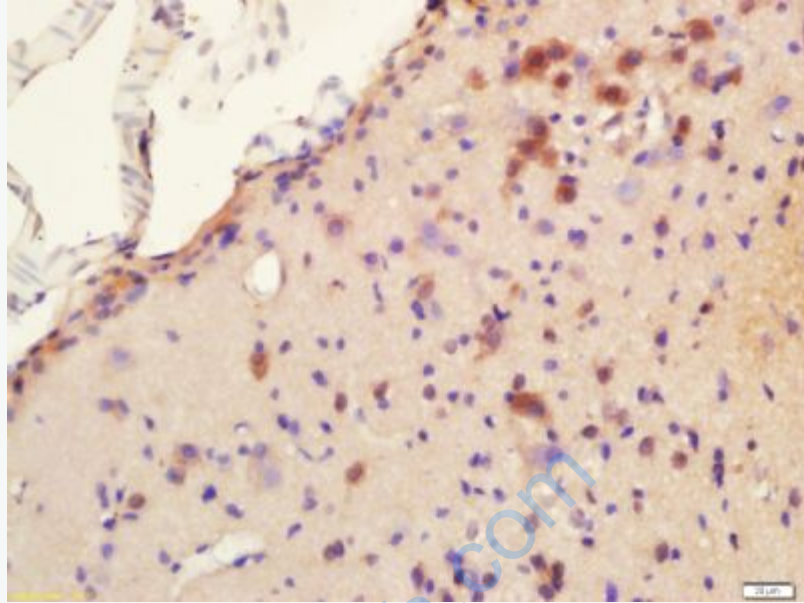
Sample: Heart (Rat) Lysate at 40 ug

Primary: Anti-LC3C (SL6230R) at 1/300 dilution

Secondary: IRDye800CW Goat Anti-Rabbit IgG at 1/20000 dilution

Predicted band size: 16 kD

Observed band size: 18 kD



Paraformaldehyde-fixed, paraffin embedded (Rat brain); Antigen retrieval by boiling in sodium citrate buffer (pH6.0) for 15min; Block endogenous peroxidase by 3% hydrogen peroxide for 20 minutes; Blocking buffer (normal goat serum) at 37°C for 30min; Antibody incubation with (LC3C) Polyclonal Antibody, Unconjugated (SL6230R) at 1:400 overnight at 4°C, followed by operating according to SP Kit(Rabbit) (sp-0023) instructions and DAB staining.