

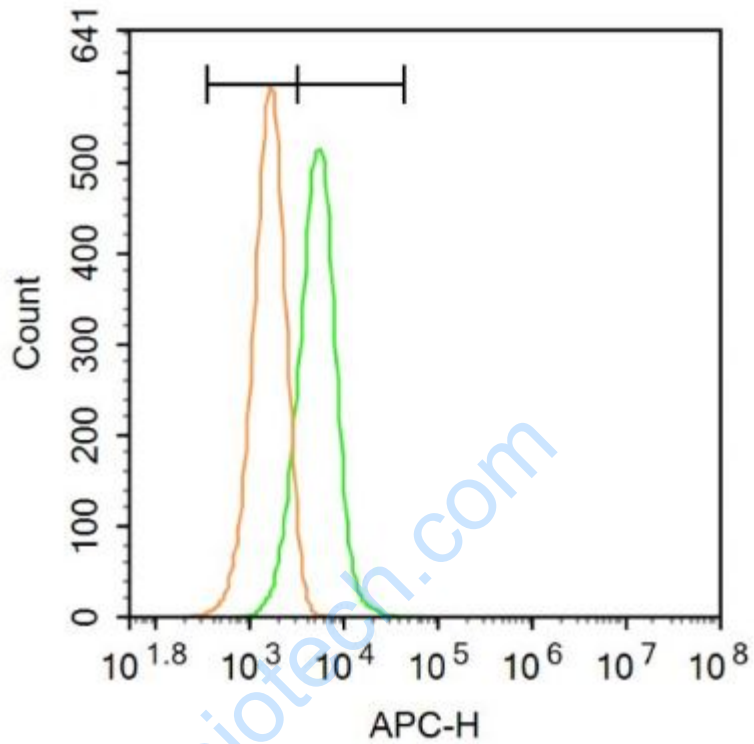


## Rabbit Anti-TM4SF3 antibody

SL6241R

<b>Product Name:</b>	TM4SF3
<b>Chinese Name:</b>	Transmembrane protein4超家族成员3抗体
<b>Alias:</b>	TSPAN8; CO029; Tetraspanin 8; Tetraspanin-8; TM4SF3; Transmembrane 4 superfamily member 3; Tspan 8; TSPAN8; Tumor associated antigen CO 029; TSN8 HUMAN.
<b>文献引用</b> <b>PubMed</b> :	<b>Specific References(1)</b>  SL6241R has been referenced in 1 publications. <b>[IF=4.02]</b> Bhansali, Meenakshi, Jun Zhou, and Lirim Shemshedini. "TM4SF3 and AR: A Nuclear Complex that Stabilizes Both Proteins." Molecular Endocrinology(2016): me-2015. <b>WB;Human.</b> <a href="#">PubMed:26649804</a>
<b>Organism Species:</b>	Rabbit
<b>Clonality:</b>	Polyclonal
<b>React Species:</b>	Human,Mouse,Rat,
<b>Applications:</b>	WB=1:500-2000ELISA=1:500-1000IHC-P=1:400-800IHC-F=1:400-800ICC=1:100-500IF=1:100-500 (Paraffin sections need antigen repair) not yet tested in other applications. optimal dilutions/concentrations should be determined by the end user.
<b>Molecular weight:</b>	26kDa
<b>Cellular localization:</b>	The cell membrane
<b>Form:</b>	Lyophilized or Liquid
<b>Concentration:</b>	1mg/ml
<b>immunogen:</b>	KLH conjugated synthetic peptide derived from human TM4SF3:101-200/237<Extracellular>
<b>Lsotype:</b>	IgG
<b>Purification:</b>	affinity purified by Protein A
<b>Storage Buffer:</b>	0.01M TBS(pH7.4) with 1% BSA, 0.03% Proclin300 and 50% Glycerol.
<b>Storage:</b>	Store at -20 °C for one year. Avoid repeated freeze/thaw cycles. The lyophilized

	<p>antibody is stable at room temperature for at least one month and for greater than a year when kept at -20°C. When reconstituted in sterile pH 7.4 0.01M PBS or diluent of antibody the antibody is stable for at least two weeks at 2-4 °C.</p>
<p><b>PubMed:</b></p>	<p><a href="#">PubMed</a></p>
<p><b>Product Detail:</b></p>	<p>TM4SF3 is a member of the transmembrane 4 superfamily, also known as the tetraspanin family. Most of these members are cell surface proteins that are characterized by the presence of four hydrophobic domains. The proteins mediate signal transduction events that play a role in the regulation of cell development, activation, growth and motility. TM4SF3 is known to complex with integrins. Its gene is expressed in different carcinomas. The use of alternate polyadenylation sites has been found for TM4SF3 gene.</p> <p><b>Subcellular Location:</b> Membrane; Multi-pass membrane protein.</p> <p><b>Tissue Specificity:</b> Gastric, colon, rectal, and pancreatic carcinomas.</p> <p><b>Similarity:</b> Belongs to the tetraspanin (TM4SF) family.</p> <p><b>SWISS:</b> P19075</p> <p><b>Gene ID:</b> 7103</p> <p><b>Database links:</b></p> <p><a href="#">Entrez Gene: 7103</a>Human</p> <p><a href="#">Omin: 600769</a>Human</p> <p><a href="#">SwissProt: P19075</a>Human</p> <p><a href="#">Unigene: 170563</a>Human</p> <p><b>Important Note:</b> This product as supplied is intended for research use only, not for use in human, therapeutic or diagnostic applications.</p>



**Picture:**

Blank control: Hela.

Primary Antibody (green line): Rabbit Anti-TM4SF3 antibody (SL6241R)

Dilution:  $3\mu\text{g} / 10^6$  cells;

Isotype Control Antibody (orange line): Rabbit IgG .

Secondary Antibody: Goat anti-rabbit IgG-AF647

Dilution:  $3\mu\text{g} / \text{test}$ .

**Protocol**

The cells were incubated in 5%BSA to block non-specific protein-protein interactions for 30 min at room temperature .Cells stained with Primary Antibody for 30 min at room temperature. The secondary antibody used for 40 min at room temperature. Acquisition of 20,000 events was performed.

