



Rabbit Anti-LCMT1 antibody

SL6249R

Product Name:	LCMT1
Chinese Name:	亮氨酸羧基甲基转移酶1抗体
Alias:	CGI 68; LCMT; LCMT1; LCMT1_HUMAN; Leucine carboxyl methyltransferase 1; PPMT1; Protein leucine O methyltransferase; Protein-leucine O-methyltransferase.
Organism Species:	Rabbit
Clonality:	Polyclonal
React Species:	Human,Mouse,Rat,
Applications:	WB=1:500-2000ELISA=1:500-1000IHC-P=1:400-800IHC-F=1:400-800IF=1:100-500 (Paraffin sections need antigen repair) not yet tested in other applications. optimal dilutions/concentrations should be determined by the end user.
Molecular weight:	38kDa
Cellular localization:	The nucleocytoplasmic
Form:	Lyophilized or Liquid
Concentration:	1mg/ml
immunogen:	KLH conjugated synthetic peptide derived from human LCMT1:45-150/334
Lsotype:	IgG
Purification:	affinity purified by Protein A
Storage Buffer:	0.01M TBS(pH7.4) with 1% BSA, 0.03% Proclin300 and 50% Glycerol.
Storage:	Store at -20 °C for one year. Avoid repeated freeze/thaw cycles. The lyophilized antibody is stable at room temperature for at least one month and for greater than a year when kept at -20°C. When reconstituted in sterile pH 7.4 0.01M PBS or diluent of antibody the antibody is stable for at least two weeks at 2-4 °C.
PubMed:	PubMed
Product Detail:	LCMT1 catalyzes the methylation of the carboxyl group of the C-terminal leucine residue (leu309) of the catalytic subunit of protein phosphatase-2A (PPP2CA; MIM 176915) Function: LCMT1, or leucine carboxyl methyltransferase 1, methylates the carboxyl group of the

C-terminal leucine residue of protein phosphatase 2A catalytic subunits (PPP2CA) to form alpha-leucine ester residues.

Similarity:

Belongs to the methyltransferase superfamily. LCMT family.

SWISS:

Q9UIC8

Gene ID:

51451

Database links:

[Entrez Gene: 51451](#)Human

[Omim: 610286](#)Human

[SwissProt: Q9UIC8](#)Human

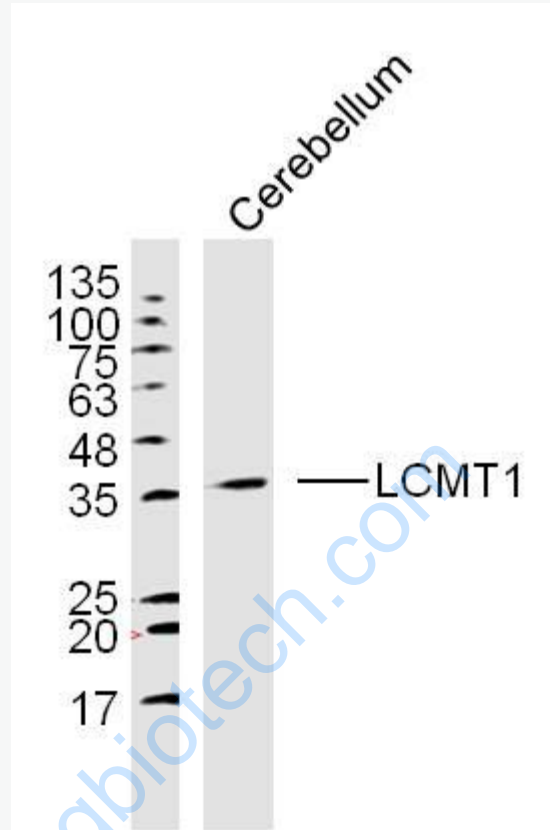
[Unigene: 337730](#)Human

Important Note:

This product as supplied is intended for research use only, not for use in human, therapeutic or diagnostic applications.

www.sunlongbiotech.com

Picture:



Sample: Cerebellum (Mouse) Lysate at 40 ug

Primary: Anti-LCMT1 (SL6249R) at 1/300 dilution

Secondary: IRDye800CW Goat Anti-Rabbit IgG at 1/20000 dilution

Predicted band size: 38 kD

Observed band size: 38 kD