



Rabbit Anti-Choline dehydrogenase antibody

SL6278R

Product Name:	Choline dehydrogenase
Chinese Name:	胆碱脱氢酶抗体
Alias:	CDH; CHD; CHDH; CHDH_HUMAN.
Organism Species:	Rabbit
Clonality:	Polyclonal
React Species:	Human,Mouse,Rat,Dog,Pig,Cow,Horse,Rabbit,Sheep,
Applications:	WB=1:500-2000ELISA=1:500-1000IHC-P=1:400-800IHC-F=1:400-800IF=1:100-500 (Paraffin sections need antigen repair) not yet tested in other applications. optimal dilutions/concentrations should be determined by the end user.
Molecular weight:	62kDa
Cellular localization:	cytoplasmicThe cell membraneMitochondrion
Form:	Lyophilized or Liquid
Concentration:	1mg/ml
immunogen:	KLH conjugated synthetic peptide derived from human CHDH/Choline dehydrogenase:321-420/594
Lsotype:	IgG
Purification:	affinity purified by Protein A
Storage Buffer:	0.01M TBS(pH7.4) with 1% BSA, 0.03% Proclin300 and 50% Glycerol.
Storage:	Store at -20 °C for one year. Avoid repeated freeze/thaw cycles. The lyophilized antibody is stable at room temperature for at least one month and for greater than a year when kept at -20°C. When reconstituted in sterile pH 7.4 0.01M PBS or diluent of antibody the antibody is stable for at least two weeks at 2-4 °C.
PubMed:	PubMed
Product Detail:	The protein encoded by this gene is a choline dehydrogenase that localizes to the mitochondrion. Variations in this gene can affect susceptibility to choline deficiency. A few transcript variants have been found for this gene, but the full-length nature of only one has been characterized to date.
	Subcellular Location:

Mitochondrion inner membrane

Similarity:

Belongs to the GMC oxidoreductase family.

SWISS:

Q8NE62

Gene ID:

55349

Database links:

[Entrez Gene: 55349](#)Human

[Entrez Gene: 218865](#)Mouse

[Entrez Gene: 290551](#)Rat

[SwissProt: Q8NE62](#)Human

[SwissProt: Q8BJ64](#)Mouse

[SwissProt: Q6UPE0](#)Rat

[Unigene: 126688](#)Human

[Unigene: 729536](#)Human

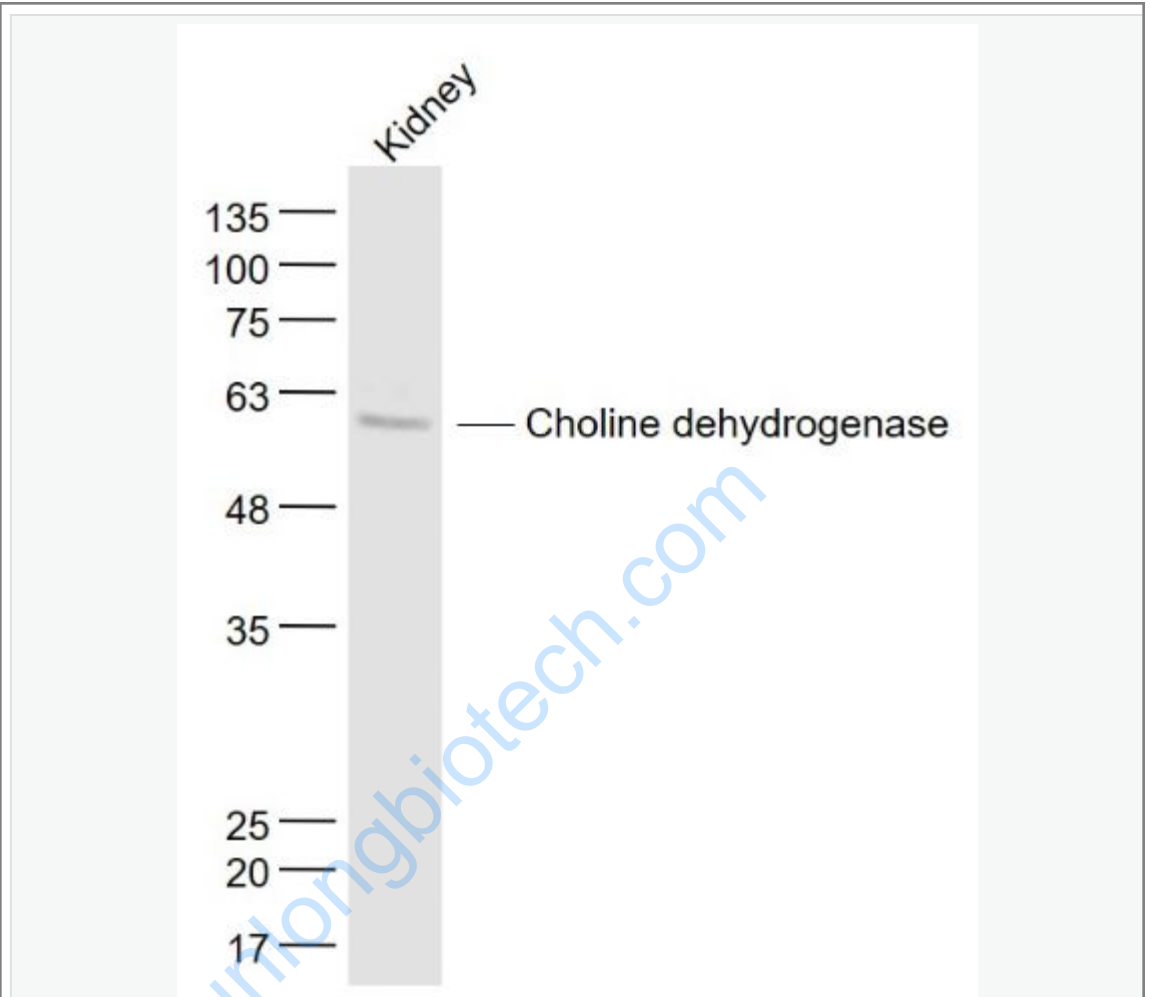
[Unigene: 259916](#)Mouse

[Unigene: 22857](#)Rat

Important Note:

This product as supplied is intended for research use only, not for use in human, therapeutic or diagnostic applications.

Picture:



Sample:

Kidney (Mouse) Lysate at 40 ug

Primary: Anti- Choline dehydrogenase (SL6278R) at 1/1000 dilution

Secondary: IRDye800CW Goat Anti-Rabbit IgG at 1/20000 dilution

Predicted band size: 62 kD

Observed band size: 62 kD