



Rabbit Anti-FUT8 antibody

SL6280R

Product Name:	FUT8
Chinese Name:	岩藻糖转移酶8抗体
Alias:	Alpha (1,6) fucosyltransferase; Alpha-(1; Alpha1 6FucT; alpha1-6FucT; Fucosyltransferase 8 (alpha (1,6) fucosyltransferase); Fucosyltransferase 8; FUT8; FUT8_HUMAN; GDP fucose glycoprotein fucosyltransferase; GDP L Fuc:N acetyl beta D glucosaminide alpha1,6 fucosyltransferase; GDP-fucose--glycoprotein fucosyltransferase; GDP-L-Fuc:N-acetyl-beta-D-glucosaminide alpha1; Glycoprotein 6 alpha L fucosyltransferase; Glycoprotein 6-alpha-L-fucosyltransferase; 6)-fucosyltransferase; 6-fucosyltransferase.
Organism Species:	Rabbit
Clonality:	Polyclonal
React Species:	Human,Mouse,Rat,Pig,Cow,Horse,Rabbit,
Applications:	ELISA=1:500-1000IHC-P=1:400-800IHC-F=1:400-800IF=1:100-500 (Paraffin sections need antigen repair) not yet tested in other applications. optimal dilutions/concentrations should be determined by the end user.
Molecular weight:	66kDa
Cellular localization:	cytoplasmicThe cell membrane
Form:	Lyophilized or Liquid
Concentration:	1mg/ml
immunogen:	KLH conjugated synthetic peptide derived from human FUT8:311-410/575
Lsotype:	IgG
Purification:	affinity purified by Protein A
Storage Buffer:	0.01M TBS(pH7.4) with 1% BSA, 0.03% Proclin300 and 50% Glycerol.
Storage:	Store at -20 °C for one year. Avoid repeated freeze/thaw cycles. The lyophilized antibody is stable at room temperature for at least one month and for greater than a year when kept at -20°C. When reconstituted in sterile pH 7.4 0.01M PBS or diluent of antibody the antibody is stable for at least two weeks at 2-4 °C.
PubMed:	PubMed
Product Detail:	Catalyzes the addition of fucose in alpha 1-6 linkage to the first GlcNAc residue, next to

the peptide chains in N-glycans. The expression of this gene may contribute to the malignancy of cancer cells and to their invasive and metastatic capabilities. There are 2 isoforms produced by alternative splicing. Immunogen is not present in isoform 2 (also known as Retinal).

Function:

Catalyzes the addition of fucose in alpha 1-6 linkage to the first GlcNAc residue, next to the peptide chains in N-glycans.

Subcellular Location:

Golgi apparatus, Golgi stack membrane; Single-pass type II membrane protein.

Similarity:

Belongs to the glycosyltransferase 23 family.
Contains 1 SH3 domain.

SWISS:

Q9BYC5

Gene ID:

2530

Database links:

[Entrez Gene: 2530](#)Human

[Entrez Gene: 53618](#)Mouse

[Entrez Gene: 432392](#)Rat

[Omim: 602589](#)Human

[SwissProt: Q9BYC5](#)Human

[SwissProt: Q9WTS2](#)Mouse

[SwissProt: Q6EV76](#)Rat

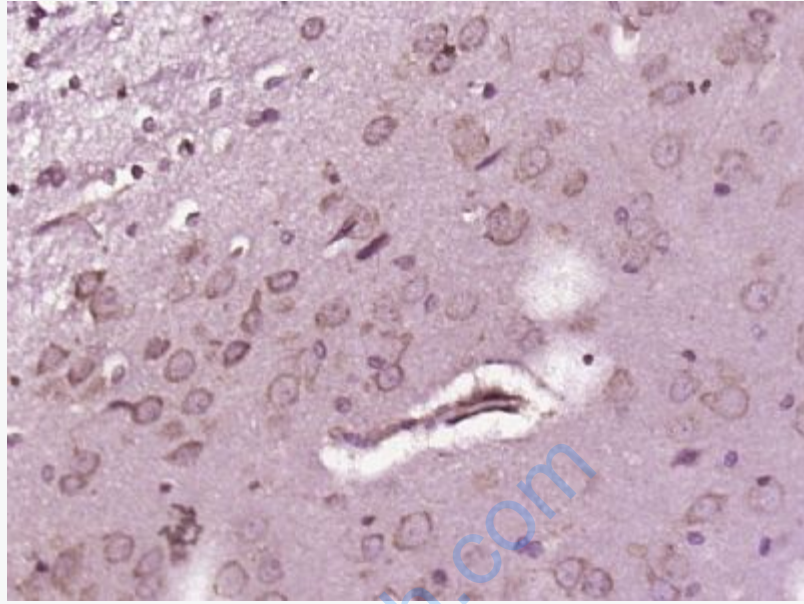
[Unigene: 654961](#)Human

[Unigene: 35628](#)Mouse

[Unigene: 1717](#)Rat

Important Note:

This product as supplied is intended for research use only, not for use in human, therapeutic or diagnostic applications.



Picture:

Paraformaldehyde-fixed, paraffin embedded (Rat brain); Antigen retrieval by boiling in sodium citrate buffer (pH6.0) for 15min; Block endogenous peroxidase by 3% hydrogen peroxide for 20 minutes; Blocking buffer (normal goat serum) at 37°C for 30min; Antibody incubation with (FUT8) Polyclonal Antibody, Unconjugated (SL6280R) at 1:400 overnight at 4°C, followed by operating according to SP Kit(Rabbit) (sp-0023) instructions and DAB staining.