



Rabbit Anti-Hepsin/TMPRSS1 antibody

SL6281R

Product Name:	Hepsin/TMPRSS1
Chinese Name:	Transmembrane protein 酶丝氨酸1 抗体
Alias:	HEPS; HEPS_HUMAN; Hepsin; HPN; Serine protease hepsin; Serine protease hepsin catalytic chain; Serine protease hepsin non catalytic chain; TMPRSS 1; TMPRSS1;TMPRSS-1;Transmembrane protease serine 1.
Organism Species:	Rabbit
Clonality:	Polyclonal
React Species:	Human,Mouse,Rat,Pig,Cow,Rabbit,Sheep,
Applications:	WB=1:500-2000ELISA=1:500-1000IHC-P=1:400-800IHC-F=1:400-800ICC=1:100-500IF=1:100-500 (Paraffin sections need antigen repair) not yet tested in other applications. optimal dilutions/concentrations should be determined by the end user.
Molecular weight:	28kDa
Cellular localization:	The cell membrane
Form:	Lyophilized or Liquid
Concentration:	1mg/ml
immunogen:	KLH conjugated synthetic peptide derived from human Hepsin:311-417/417<Extracellular>
Lsotype:	IgG
Purification:	affinity purified by Protein A
Storage Buffer:	0.01M TBS(pH7.4) with 1% BSA, 0.03% Proclin300 and 50% Glycerol.
Storage:	Store at -20 °C for one year. Avoid repeated freeze/thaw cycles. The lyophilized antibody is stable at room temperature for at least one month and for greater than a year when kept at -20°C. When reconstituted in sterile pH 7.4 0.01M PBS or diluent of antibody the antibody is stable for at least two weeks at 2-4 °C.
PubMed:	PubMed
Product Detail:	This gene encodes a type II transmembrane serine protease. The encoded protein has an extracellular region that consists of two domains, a catalytic serine protease domain and a non-catalytic scavenger receptor cysteine-rich domain. This protein may be involved in diverse cellular functions including blood coagulation, maintenance of cell morphology

and the growth and progression of certain cancers, particularly prostate cancer. Alternative splicing results in multiple transcript variants.

Function:

Plays an essential role in cell growth and maintenance of cell morphology. May mediate the activating cleavage of HGF and MST1/HGFL.

Subcellular Location:

Membrane; Single-pass type II membrane protein.

Tissue Specificity:

Present in most tissues, with the highest level in liver.

Similarity:

Belongs to the peptidase S1 family.
Contains 1 peptidase S1 domain.
Contains 1 SRCR domain.

SWISS:

P05981

Gene ID:

3249

Database links:

[Entrez Gene: 3249](#) Human

[Omim: 142440](#) Human

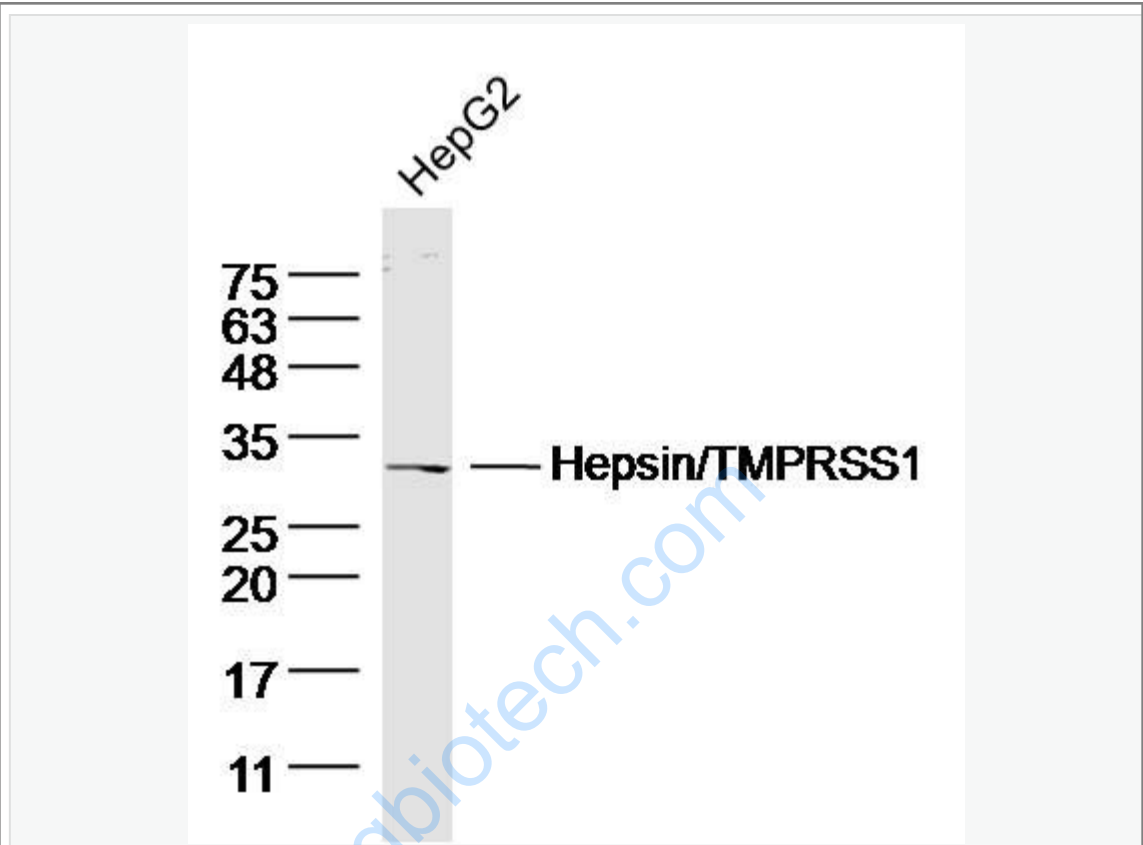
[SwissProt: P05981](#) Human

[Unigene: 182385](#) Human

Important Note:

This product as supplied is intended for research use only, not for use in human, therapeutic or diagnostic applications.

Picture:



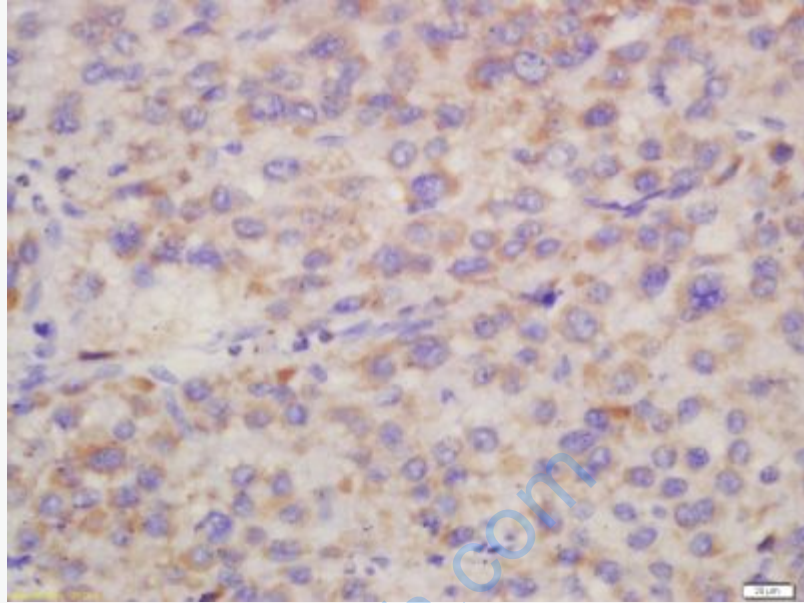
Sample: HepG2 (human)Cell Lysate at 40 ug

Primary: Anti- Hepsin/TMPRSS1 (SL6281R)at 1/300 dilution

Secondary: IRDye800CW Goat Anti-Rabbit IgG at 1/20000 dilution

Predicted band size: 28kD

Observed band size: 28 kD



Tissue/cell: human liver carcinoma; 4% Paraformaldehyde-fixed and paraffin-embedded;

Antigen retrieval: citrate buffer (0.01M, pH 6.0), Boiling bathing for 15min; Block endogenous peroxidase by 3% Hydrogen peroxide for 30min; Blocking buffer (normal goat serum,C-0005) at 37°C for 20 min;

Incubation: Anti-Hepsin Polyclonal Antibody, Unconjugated(SL6281R) 1:200, overnight at 4°C, followed by conjugation to the secondary antibody(SP-0023) and DAB(C-0010) staining