



## Rabbit Anti-TKTL1 antibody

SL6284R

<b>Product Name:</b>	TKTL1
<b>Chinese Name:</b>	酮基移换酶样蛋白1抗体
<b>Alias:</b>	TK 2; TK2; TKR; TKT 2; TKT2; TKTL1; TKTL1_HUMAN; Transketolase 2; Transketolase like 1; Transketolase like protein 1; Transketolase related protein; Transketolase-like protein 1; Transketolase-related protein; Transketolase2.
<b>Organism Species:</b>	Rabbit
<b>Clonality:</b>	Polyclonal
<b>React Species:</b>	Human,Mouse,Rat,Dog,Pig,Cow,Horse,Rabbit,Sheep,
<b>Applications:</b>	WB=1:500-2000ELISA=1:500-1000IHC-P=1:400-800IHC-F=1:400-800IF=1:100-500 (Paraffin sections need antigen repair) not yet tested in other applications. optimal dilutions/concentrations should be determined by the end user.
<b>Molecular weight:</b>	65 kDa
<b>Cellular localization:</b>	The nucleuscytoplasmic
<b>Form:</b>	Lyophilized or Liquid
<b>Concentration:</b>	1mg/ml
<b>immunogen:</b>	KLH conjugated synthetic peptide derived from human TKTL1:101-200/596
<b>Lsotype:</b>	IgG
<b>Purification:</b>	affinity purified by Protein A
<b>Storage Buffer:</b>	0.01M TBS(pH7.4) with 1% BSA, 0.03% Proclin300 and 50% Glycerol.
<b>Storage:</b>	Store at -20 °C for one year. Avoid repeated freeze/thaw cycles. The lyophilized antibody is stable at room temperature for at least one month and for greater than a year when kept at -20°C. When reconstituted in sterile pH 7.4 0.01M PBS or diluent of antibody the antibody is stable for at least two weeks at 2-4 °C.
<b>PubMed:</b>	<a href="#">PubMed</a>
<b>Product Detail:</b>	The protein encoded by this gene is a transketolase that acts as a homodimer and catalyzes the conversion of sedoheptulose 7-phosphate and D-glyceraldehyde 3-phosphate to D-ribose 5-phosphate and D-xylulose 5-phosphate. This reaction links the pentose phosphate pathway with the glycolytic pathway. Variations in this gene may be the cause of Wernicke-Korsakoff syndrome. Three transcript variants encoding different

isoforms have been found for this gene.

**Function:**

Catalyzes the transfer of a two-carbon ketol group from a ketose donor to an aldose acceptor, via a covalent intermediate with the cofactor thiamine pyrophosphate

**Subunit:**

Homodimer

**Subcellular Location:**

Cytoplasm. Nucleus. Note=Predominantly cytoplasmic and to a lesser extent also nuclear.

**Tissue Specificity:**

Expressed in fetal and adult heart, brain, lung, liver, and kidney, and in adult placenta, skeletal muscle and pancreas. Up-regulated in various epithelial tumors.

**Similarity:**

Belongs to the transketolase family.

**SWISS:**

P51854

**Gene ID:**

8277

**Database links:**

[Entrez Gene: 8277](#)Human

[Omim: 300044](#)Human

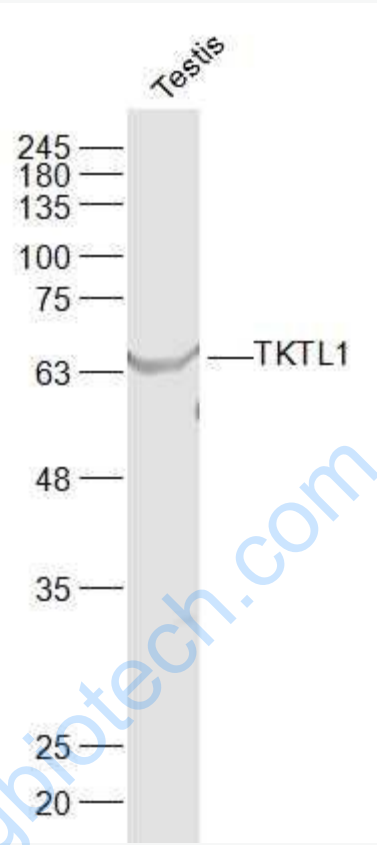
[SwissProt: P51854](#)Human

[Unigene: 102866](#)Human

**Important Note:**

This product as supplied is intended for research use only, not for use in human, therapeutic or diagnostic applications.

Picture:



Sample:

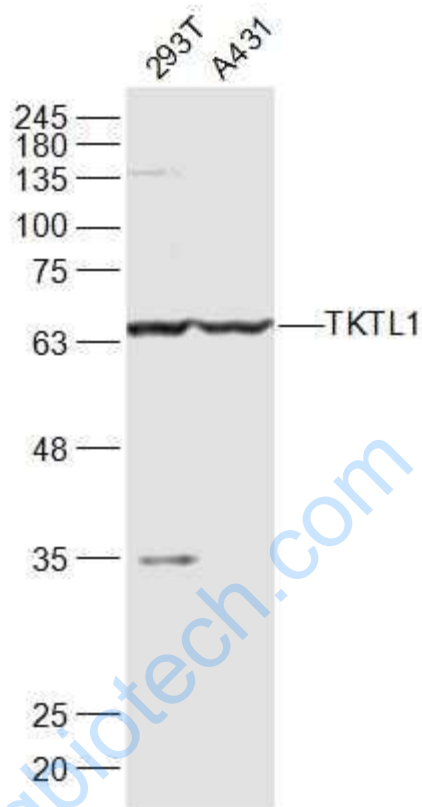
Testis (Mouse) Lysate at 40 ug

Primary: Anti-TKTL1 (SL6284R) at 1/1000 dilution

Secondary: IRDye800CW Goat Anti-Rabbit IgG at 1/20000 dilution

Predicted band size: 65 kD

Observed band size: 65 kD



Sample:

293T(Human) Cell Lysate at 30 ug

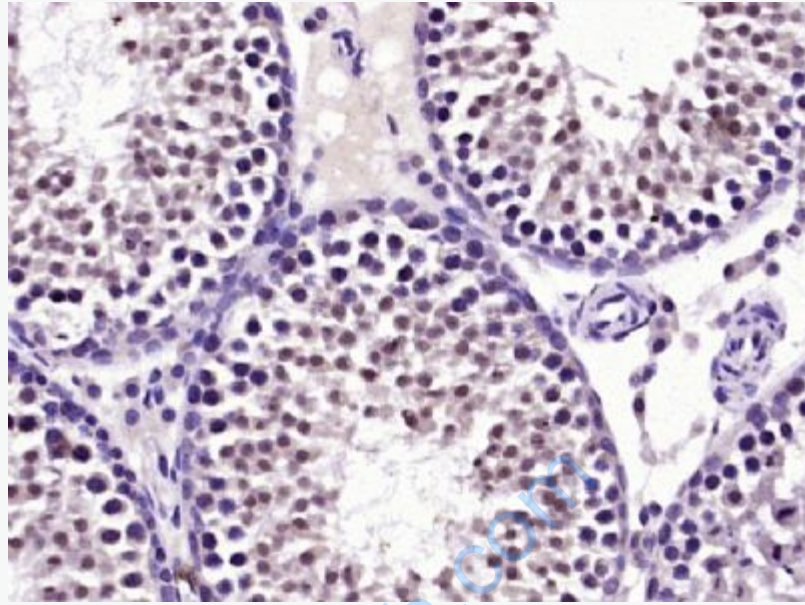
A431(Human) Cell Lysate at 30 ug

Primary: Anti-TKTL1 (SL6284R) at 1/1000 dilution

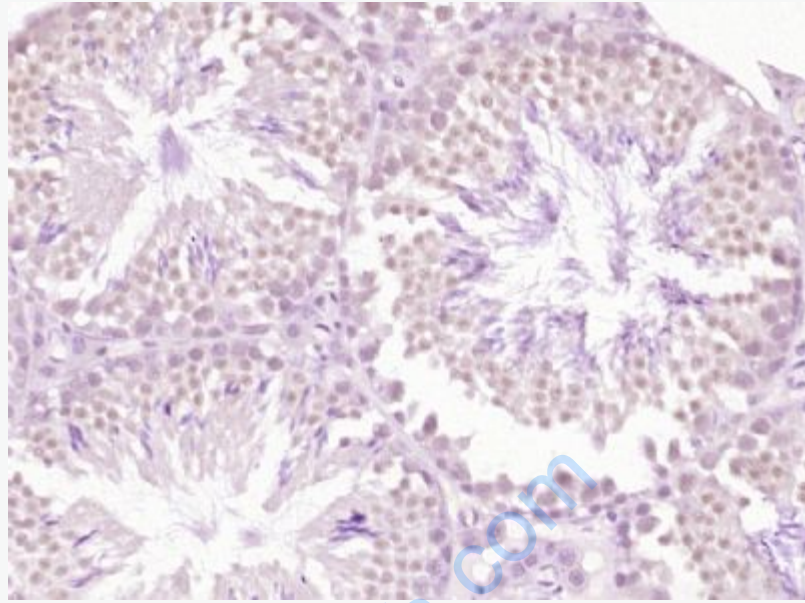
Secondary: IRDye800CW Goat Anti-Rabbit IgG at 1/20000 dilution

Predicted band size: 65 kD

Observed band size: 65 kD



Paraformaldehyde-fixed, paraffin embedded (Rat testis); Antigen retrieval by boiling in sodium citrate buffer (pH6.0) for 15min; Block endogenous peroxidase by 3% hydrogen peroxide for 20 minutes; Blocking buffer (normal goat serum) at 37°C for 30min; Antibody incubation with (TKTL1) Polyclonal Antibody, Unconjugated (SL6284R) at 1:400 overnight at 4°C, followed by operating according to SP Kit(Rabbit) (sp-0023) instructions and DAB staining.



Paraformaldehyde-fixed, paraffin embedded (Mouse testis); Antigen retrieval by boiling in sodium citrate buffer (pH6.0) for 15min; Block endogenous peroxidase by 3% hydrogen peroxide for 20 minutes; Blocking buffer (normal goat serum) at 37°C for 30min; Antibody incubation with (TKTL1) Polyclonal Antibody, Unconjugated (SL6284R) at 1:400 overnight at 4°C, followed by operating according to SP Kit(Rabbit) (sp-0023) instructions and DAB staining.