



## Rabbit Anti-PRSS10 antibody

SL6285R

<b>Product Name:</b>	PRSS10
<b>Chinese Name:</b>	丝氨酸蛋白酶10抗体
<b>Alias:</b>	Epitheliasin; PRSS10; Serine protease 10; TMPRSS2; TMPRSS2 ERG FUSION GENE, INCLUDED; TMPRSS2 ETV1 FUSION GENE, INCLUDED; TMPS2_HUMAN; Transmembrane protease serine 2 catalytic chain; Transmembrane protease, serine 2; Transmembrane protease, serine 2, EC 3.4.219; Transmembrane protease, serine 2, EC 3.4.219; D16Ert61e.
<b>Organism Species:</b>	Rabbit
<b>Clonality:</b>	Polyclonal
<b>React Species:</b>	Human,Mouse,Rat,Pig,Cow,Sheep,
<b>Applications:</b>	WB=1:500-2000ELISA=1:500-1000IHC-P=1:400-800IHC-F=1:400-800ICC=1:100-500IF=1:100-500 (Paraffin sections need antigen repair) not yet tested in other applications. optimal dilutions/concentrations should be determined by the end user.
<b>Molecular weight:</b>	28kDa
<b>Cellular localization:</b>	The cell membraneSecretory protein
<b>Form:</b>	Lyophilized or Liquid
<b>Concentration:</b>	1mg/ml
<b>immunogen:</b>	KLH conjugated synthetic peptide derived from human PRSS10:301-400/492<Extracellular>
<b>Lsotype:</b>	IgG
<b>Purification:</b>	affinity purified by Protein A
<b>Storage Buffer:</b>	0.01M TBS(pH7.4) with 1% BSA, 0.03% Proclin300 and 50% Glycerol.
<b>Storage:</b>	Store at -20 °C for one year. Avoid repeated freeze/thaw cycles. The lyophilized antibody is stable at room temperature for at least one month and for greater than a year when kept at -20°C. When reconstituted in sterile pH 7.4 0.01M PBS or diluent of antibody the antibody is stable for at least two weeks at 2-4 °C.
<b>PubMed:</b>	<a href="#">PubMed</a>
<b>Product Detail:</b>	Extracellular proteases mediate the digestion of neighboring extracellular matrix components in initial tumor growth, allow desquamation of tumor cells into the

surrounding environment, provide the basis for invasion of basement membranes in targeted metastatic organs and are required for release and activation of many growth and angiogenic factors (1,2). The TMPRSS2 gene encodes a 492 amino acid multimeric serine protease, which is mainly expressed in the mouse prostate and kidney, and is also expressed in the human small intestine, prostate, colon, stomach and salivary gland (3,4). TMPRSS2 contains several domains, including a serine protease domain of the S1 family, a scavenger receptor cysteine-rich domain of group A, an LDL receptor class A domain and a transmembrane domain (3). TMPRSS2 is expressed as a full length form and a cleaved protease domain (5) and its expression is increased by androgenic hormones. TMPRSS2 is also expressed in prostate carcinoma, suggesting that it may play a role in prostate carcinogenesis (6).

**Function:**

Expressed strongly in small intestine. Also expressed in prostate, colon, stomach and salivary gland.

**Subcellular Location:**

Cell membrane and Secreted. Activated by cleavage and secreted.

**Tissue Specificity:**

Expressed strongly in small intestine. Also expressed in prostate, colon, stomach and salivary gland.

**Similarity:**

Belongs to the peptidase S1 family.  
Contains 1 LDL-receptor class A domain.  
Contains 1 peptidase S1 domain.  
Contains 1 SRCR domain.

**SWISS:**

O15393

**Gene ID:**

7113

**Database links:**

[Entrez Gene: 7113](#)Human

[Entrez Gene: 50528](#)Mouse

[Entrez Gene: 156435](#)Rat

[Omim: 602060](#)Human

[SwissProt: O15393](#)Human

[SwissProt: Q9JIQ8](#)Mouse

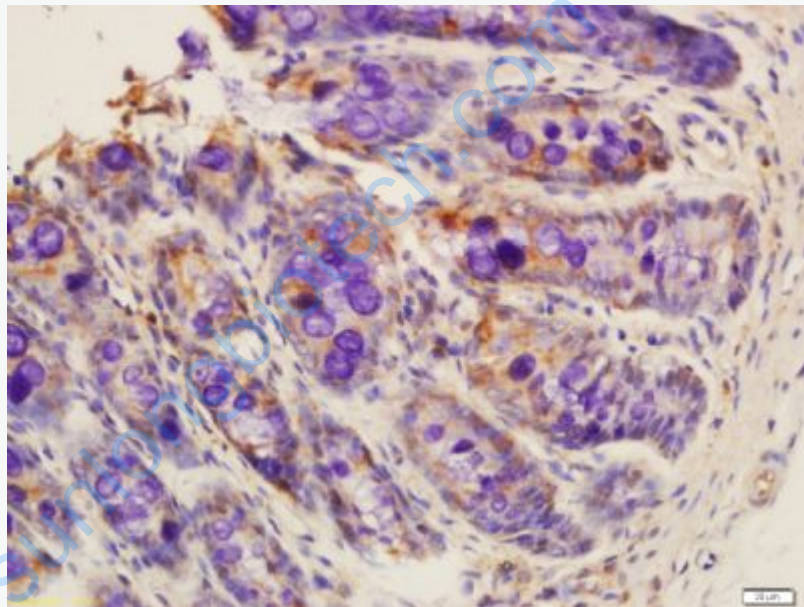
[Unigene: 439309](#)Human

[Unigene: 276145](#)Mouse

[Unigene: 81082](#)Rat

**Important Note:**

This product as supplied is intended for research use only, not for use in human, therapeutic or diagnostic applications.



**Picture:**

Tissue/cell: rat colon tissue; 4% Paraformaldehyde-fixed and paraffin-embedded;

Antigen retrieval: citrate buffer ( 0.01M, pH 6.0 ), Boiling bathing for 15min; Block endogenous peroxidase by 3% Hydrogen peroxide for 30min; Blocking buffer (normal goat serum,C-0005) at 37°C for 20 min;

Incubation: Anti-PRSS10 Polyclonal Antibody, Unconjugated(SL6285R) 1:200, overnight at 4°C, followed by conjugation to the secondary antibody(SP-0023) and DAB(C-0010) staining