



Rabbit Anti-TMPRSS4 antibody

SL6286R

Product Name:	TMPRSS4
Chinese Name:	膜型丝氨酸蛋白酶2抗体
Alias:	MT SP2; Membrane type serine protease 2; TMPRSS 4; TMPRSS3; Transmembrane protease, serine 4; Transmembrane serine protease 3; UNQ776/PRO1570; TMPS4 HUMAN.
Organism Species:	Rabbit
Clonality:	Polyclonal
React Species:	Human,Mouse,Rat,Dog,Horse,
Applications:	WB=1:500-2000ELISA=1:500-1000IHC-P=1:400-800IHC-F=1:400-800IF=1:100-500 (Paraffin sections need antigen repair) not yet tested in other applications. optimal dilutions/concentrations should be determined by the end user.
Molecular weight:	48kDa
Cellular localization:	The cell membrane
Form:	Lyophilized or Liquid
Concentration:	1mg/ml
immunogen:	KLH conjugated synthetic peptide derived from human TMPRSS4:84-130/437<Extracellular>
Lsotype:	IgG
Purification:	affinity purified by Protein A
Storage Buffer:	0.01M TBS(pH7.4) with 1% BSA, 0.03% Proclin300 and 50% Glycerol.
Storage:	Store at -20 °C for one year. Avoid repeated freeze/thaw cycles. The lyophilized antibody is stable at room temperature for at least one month and for greater than a year when kept at -20°C. When reconstituted in sterile pH 7.4 0.01M PBS or diluent of antibody the antibody is stable for at least two weeks at 2-4 °C.
PubMed:	PubMed
Product Detail:	TMPRSS4 is a member of the peptidase S1 family and contains 1 LDL receptor class A domain, 1 peptidase S1 domain and 1 SRCR domain. It is a probable membrane protease capable of activating ENaC and may process sodium channels in endothelial cells. TMPRSS4 is overexpressed in thyroid neoplasms, and splice variants in

TMPRSS4 are thought to be linked with different cancers. Three named isoforms are produced by alternative splicing.

Function:

Probable protease. Seems to be capable of activating ENaC.

Subcellular Location:

Membrane; Single-pass type II membrane protein (Potential).

Tissue Specificity:

High levels in pancreatic, gastric, colorectal and ampullary cancer. Very weak expression in normal gastrointestinal and urogenital tract.

Similarity:

Belongs to the peptidase S1 family.
Contains 1 LDL-receptor class A domain.
Contains 1 peptidase S1 domain.
Contains 1 SRCR domain.

SWISS:

Q9NRS4

Gene ID:

56649

Database links:

[Entrez Gene: 451581](#)Chimpanzee

[Entrez Gene: 489387](#)Dog

[Entrez Gene: 101147411](#)Gorilla

[Entrez Gene: 100071190](#)Horse

[Entrez Gene: 56649](#)Human

[Entrez Gene: 100390415](#)Marmoset (common)

[Entrez Gene: 100436934](#)Orangutan

[Omim: 606565](#)Human

[SwissProt: Q9NRS4](#)Human

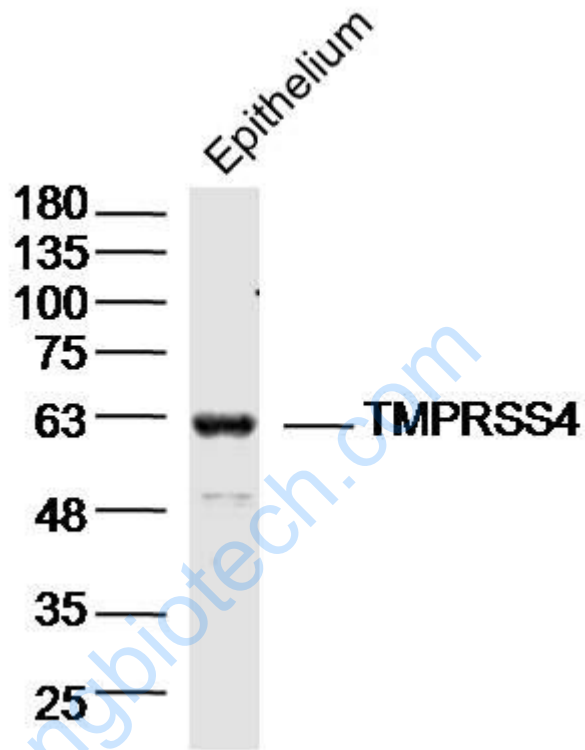
[Unigene: 161985](#)Human

Important Note:

This product as supplied is intended for research use only, not for use in human,

therapeutic or diagnostic applications.

Picture:



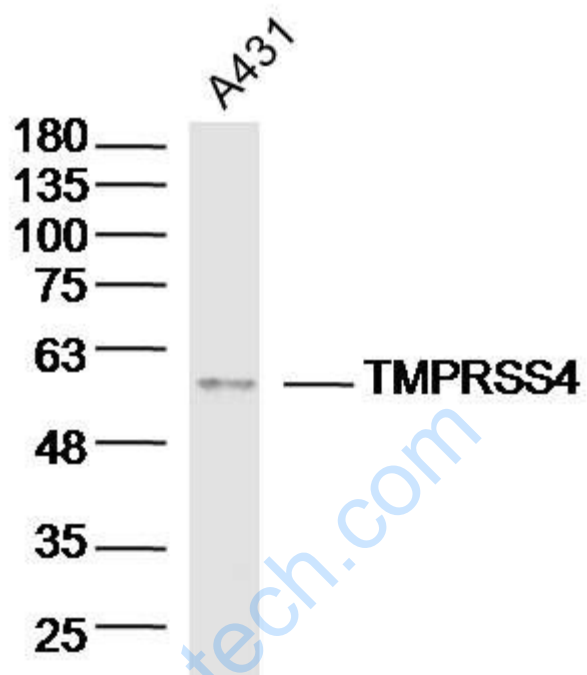
Sample: Epithelium (Mouse) Lysate at 40 ug

Primary: Anti-TMPRSS4(SL6286R) at 1/300 dilution

Secondary: IRDye800CW Goat Anti-Rabbit IgG at 1/20000 dilution

Predicted band size: 48kD

Observed band size: 60kD



Sample: A431 (Human) Cell Lysate at 40 ug

Primary: Anti-TMPRSS4(SL6286R) at 1/300 dilution

Secondary: IRDye800CW Goat Anti-Rabbit IgG at 1/20000 dilution

Predicted band size: 48kD

Observed band size: 55kD