



Rabbit Anti-ACPT antibody

SL6289R

Product Name:	ACPT
Chinese Name:	睾丸酸性磷酸酶抗体
Alias:	Acid phosphatase testicular; Testicular acid phosphatase; PPAT HUMAN.
Organism Species:	Rabbit
Clonality:	Polyclonal
React Species:	Human,Mouse,Rat,Dog,Horse,
Applications:	WB=1:500-2000ELISA=1:500-1000IHC-P=1:400-800IHC-F=1:400-800Flow-Cyt=0.2ug/testIF=1:100-500 (Paraffin sections need antigen repair) not yet tested in other applications. optimal dilutions/concentrations should be determined by the end user.
Molecular weight:	47kDa
Cellular localization:	The cell membrane
Form:	Lyophilized or Liquid
Concentration:	1mg/ml
immunogen:	KLH conjugated synthetic peptide derived from human ACPT:65-160/437
Lsotype:	IgG
Purification:	affinity purified by Protein A
Storage Buffer:	0.01M TBS(pH7.4) with 1% BSA, 0.03% Proclin300 and 50% Glycerol.
Storage:	Store at -20 °C for one year. Avoid repeated freeze/thaw cycles. The lyophilized antibody is stable at room temperature for at least one month and for greater than a year when kept at -20°C. When reconstituted in sterile pH 7.4 0.01M PBS or diluent of antibody the antibody is stable for at least two weeks at 2-4 °C.
PubMed:	PubMed
Product Detail:	Acid phosphatases are enzymes capable of hydrolyzing orthophosphoric acid esters in an acid medium. This gene is upregulated by androgens and is down-regulated by estrogens in the prostate cancer cell line. ACPT dephosphorylates receptor tyrosine-protein kinase erbB-4 and inhibits the ligand-induced proteolytic cleavage. ACPT is predominantly expressed in testis but exhibits a lower level of expression in testicular cancer tissues than in normal tissues. ACPT has structural similarity to prostatic and lysosomal acid phosphatases. Alternatively spliced transcript variants have been

described, but their biological validity has not been determined.

Subcellular Location:

Membrane; Single-pass type II membrane protein (Potential).

Tissue Specificity:

High levels in pancreatic, gastric, colorectal and ampullary cancer. Very weak expression in normal gastrointestinal and urogenital tract.

Similarity:

Belongs to the peptidase S1 family.

Contains 1 LDL-receptor class A domain.

Contains 1 peptidase S1 domain.

Contains 1 SRCR domain.

SWISS:

Q9BZG2

Gene ID:

93650

Database links:

[Entrez Gene: 93650](#)Human

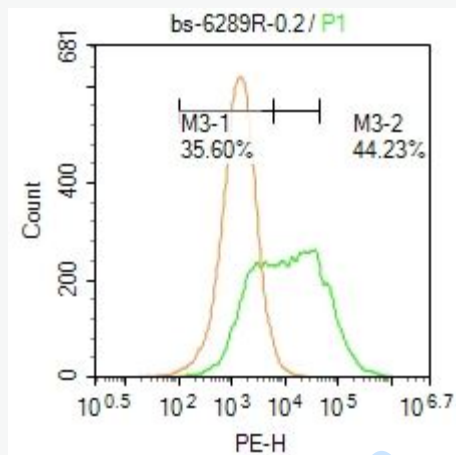
[Omid: 606362](#)Human

[SwissProt: Q9BZG2](#)Human

[Unigene: 293394](#)Human

Important Note:

This product as supplied is intended for research use only, not for use in human, therapeutic or diagnostic applications.



Picture:

Blank control: Hela.

Primary Antibody (green line): Rabbit Anti-ACPT antibody (SL6289R)

Dilution: $1\mu\text{g} / 10^6$ cells;

Isotype Control Antibody (orange line): Rabbit IgG .

Secondary Antibody : Goat anti-rabbit IgG-PE

Dilution: $0.2\mu\text{g} / \text{test}$.

Protocol

The cells were incubated in 5 %BSA to block non-specific protein-protein interactions for 30 min at room temperature .Cells stained with Primary Antibody for 30 min at room temperature. The secondary antibody used for 40 min at room temperature. Acquisition of 20,000 events was performed.