



## Rabbit Anti-Prostaglandin E Receptor EP1 antibody

SL6316R

<b>Product Name:</b>	Prostaglandin E Receptor EP1
<b>Chinese Name:</b>	前列腺素EP1受体抗体
<b>Alias:</b>	Prostaglandin E Receptor EP1; EP1; PGE receptor EP1 subtype; PGE2 receptor EP1 subtype; Prostaglandin E receptor 1 subtype EP1 42kDa; Prostaglandin E receptor 1 subtype EP1; Prostaglandin E2 receptor EP1 subtype; Prostanoid EP1 receptor; PE2R1_HUMAN.
<b>Organism Species:</b>	Rabbit
<b>Clonality:</b>	Polyclonal
<b>React Species:</b>	Human,Mouse,Rat,Dog,
<b>Applications:</b>	WB=1:500-2000ELISA=1:500-1000IHC-P=1:400-800IHC-F=1:400-800Flow-Cyt=1ug/TestIF=1:100-500 (Paraffin sections need antigen repair) not yet tested in other applications. optimal dilutions/concentrations should be determined by the end user.
<b>Molecular weight:</b>	42kDa
<b>Cellular localization:</b>	The cell membrane
<b>Form:</b>	Lyophilized or Liquid
<b>Concentration:</b>	1mg/ml
<b>immunogen:</b>	KLH conjugated synthetic peptide derived from human PTGER1/Prostaglandin E Receptor EP1:61-160/402<Extracellular>
<b>Lsotype:</b>	IgG
<b>Purification:</b>	affinity purified by Protein A
<b>Storage Buffer:</b>	0.01M TBS(pH7.4) with 1% BSA, 0.03% Proclin300 and 50% Glycerol.
<b>Storage:</b>	Store at -20 °C for one year. Avoid repeated freeze/thaw cycles. The lyophilized antibody is stable at room temperature for at least one month and for greater than a year when kept at -20°C. When reconstituted in sterile pH 7.4 0.01M PBS or diluent of antibody the antibody is stable for at least two weeks at 2-4 °C.
<b>PubMed:</b>	<a href="#">PubMed</a>
<b>Product Detail:</b>	PTGER1 is a subtype 1 receptor for prostaglandin E2 (PGE2). This receptor is coupled

to the phosphatidylinositol-calcium second messenger system by G(q) proteins. PTGER1 may be an important modulator of renal function and is implicated in the smooth muscle contractile response to PGE2 in various tissues.

**Subcellular Location:**

Cell membrane; Multi-pass membrane protein.

**Tissue Specificity:**

Abundant in kidney. Lower level expression in lung, skeletal muscle and spleen, lowest expression in testis and not detected in liver brain and heart.

**Similarity:**

Belongs to the G-protein coupled receptor 1 family.

**SWISS:**

P34995

**Gene ID:**

5731

**Database links:**

[Entrez Gene: 5731](#) Human

[Entrez Gene: 19216](#) Mouse

[Entrez Gene: 25637](#) Rat

[Omim: 176802](#) Human

[SwissProt: P34995](#) Human

[SwissProt: P35375](#) Mouse

[SwissProt: P70597](#) Rat

[Unigene: 159360](#) Human

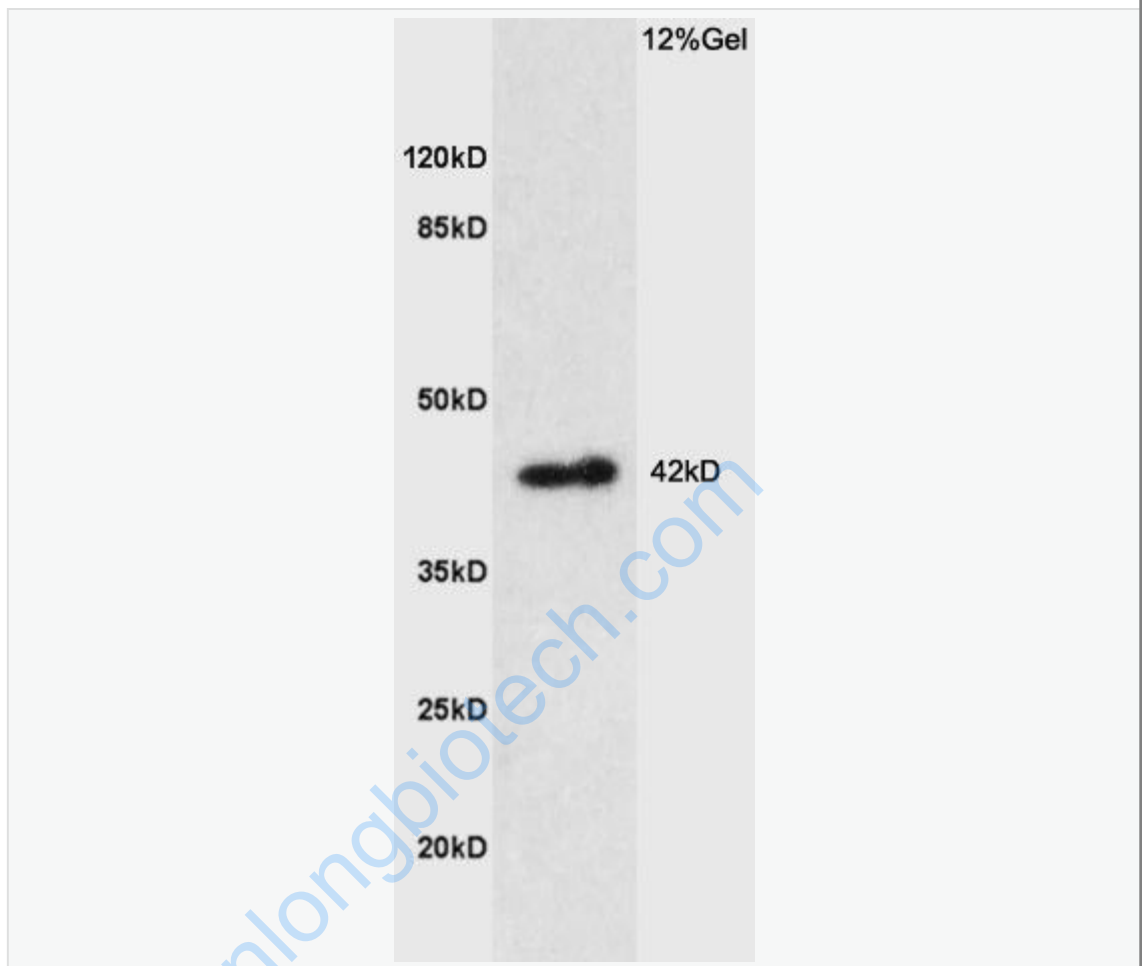
[Unigene: 474430](#) Mouse

[Unigene: 11423](#) Rat

**Important Note:**

This product as supplied is intended for research use only, not for use in human, therapeutic or diagnostic applications.

Picture:



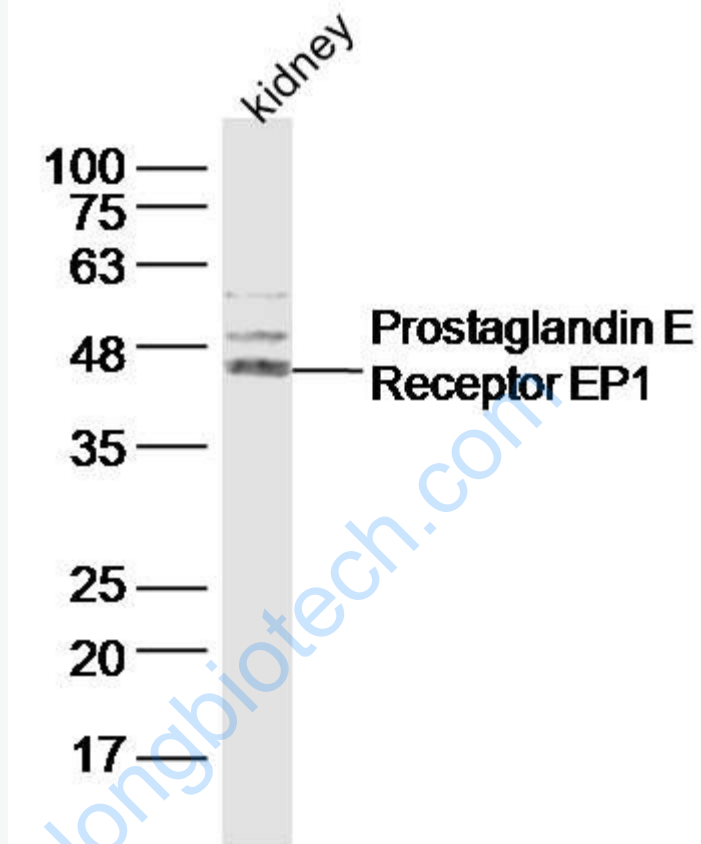
Sample: Brain (Rat) Lysate at 40 ug

Primary: Anti-Prostaglandin E Receptor EP1 (SL6316R) at 1/300 dilution

Secondary: HRP conjugated Goat-Anti-rabbit IgG (SL6316R) at 1/5000 dilution

Predicted band size: 42 kD

Observed band size: 42 kD



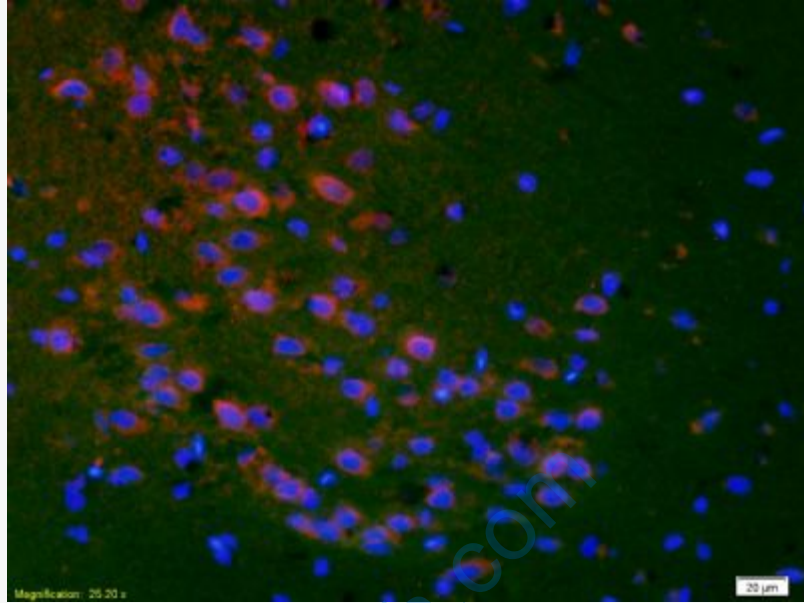
Sample: Kidney (Mouse) Lysate at 40 ug

Primary: Anti-Prostaglandin E Receptor EP1 (SL6316R) at 1/300 dilution

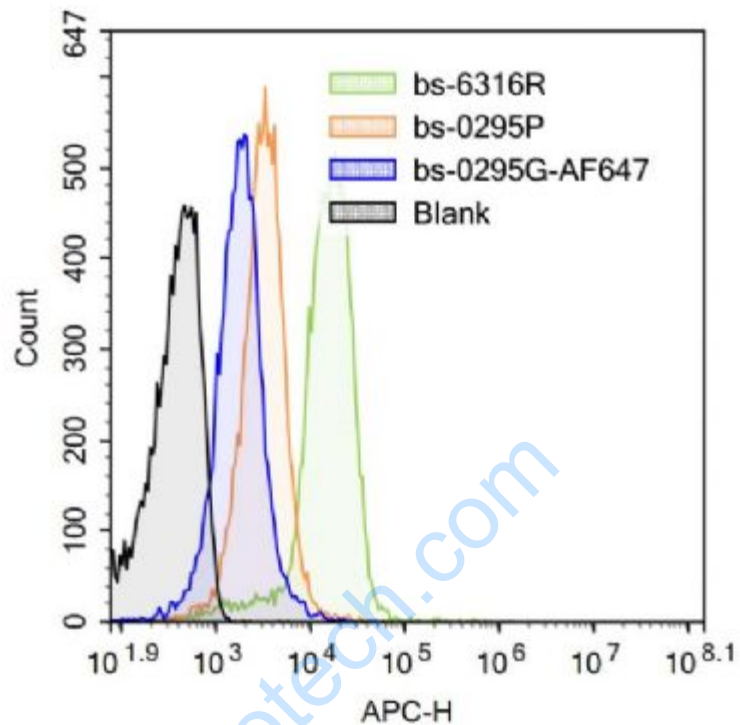
Secondary: IRDye800CW Goat Anti-Rabbit IgG at 1/20000 dilution

Predicted band size: 42 kD

Observed band size: 45 kD



Tissue/cell: rat brain tissue;4% Paraformaldehyde-fixed and paraffin-embedded;  
Antigen retrieval: citrate buffer ( 0.01M, pH 6.0 ), Boiling bathing for 15min;  
Blocking buffer (normal goat serum,C-0005) at 37°C for 20 min;  
Incubation: Anti-PTGER1 Polyclonal Antibody, Unconjugated(SL6316R) 1:200,  
overnight at 4°C; The secondary antibody was Goat Anti-Rabbit IgG, Cy3  
conjugated(SL6316R)used at 1:200 dilution for 40 minutes at 37°C.  
DAPI(5ug/ml,blue,C-0033) was used to stain the cell nuclei



Blank control (Black line): Mouse blood (Black).

Primary Antibody (green line): Rabbit Anti-Prostaglandin E Receptor EP1 antibody (SL6316R)

Dilution: 3 $\mu$ g /10<sup>6</sup> cells;

Isotype Control Antibody (orange line): Rabbit IgG .

Secondary Antibody (white blue line): Goat anti-rabbit IgG-AF647

Dilution: 1 $\mu$ g /test.

#### Protocol

The cells were fixed with 4% PFA (10min at room temperature) and then were incubated in 5%BSA to block non-specific protein-protein interactions for 30 min at room temperature .Cells stained with Primary Antibody for 30 min at room temperature. The secondary antibody used for 40 min at room temperature.

	Acquisition of 20,000 events was performed.
--	---

[www.sunlongbiotech.com](http://www.sunlongbiotech.com)