



## Rabbit Anti-IL-1 Beta antibody

SL6319R

<b>Product Name:</b>	IL-1 Beta
<b>Chinese Name:</b>	白介素1β抗体
<b>Alias:</b>	Catabolin; H1; IL-1β; Hematopoietin 1; IFN beta inducing factor; IL 1; IL 1 beta; IL 1B; IL1B; IL1F2; Interleukin 1 beta; Interleukin 1 beta precursor; LAF; OAF; Osteoclast activating factor; Preinterleukin beta; Pro interleukin 1 beta; IL1B_HUMAN; Interleukin-1 beta; IL-1 beta.
<b>文献引用</b> PubMed	<p><b>Specific References(2)</b> SL6319R has been referenced in 2 publications.</p> <p><b>[IF=2.33]</b>Li, Kang, et al. "CD14 knockdown reduces lipopolysaccharide-induced cell viability and expression of inflammation-associated genes in gastric cancer cells in vitro and in nude mouse xenografts." Molecular Medicine Reports.<b>WB;Human.</b>  <a href="#">PubMed:23338226</a></p> <p><b>[IF=2.55]</b>Dinesh, Palani, and MahaboobKhan Rasool. "Berberine, an isoquinoline alkaloid suppresses TXNIP mediated NLRP3 inflammasome activation in MSU crystal stimulated RAW 264.7 macrophages through the upregulation of Nrf2 transcription factor and alleviates MSU crystal induced inflammation in rats." International Immunopharmacology 44 (2017): 26-37.<b>WB;Mouse.</b>  <a href="#">PubMed:28068647</a></p>
<b>Organism Species:</b>	Rabbit
<b>Clonality:</b>	Polyclonal
<b>React Species:</b>	Human,Mouse,Rat,Dog,Horse,Rabbit,
<b>Applications:</b>	WB=1:500-2000ELISA=1:500-1000IHC-P=1:400-800IHC-F=1:400-800IF=1:100-500 (Paraffin sections need antigen repair) not yet tested in other applications. optimal dilutions/concentrations should be determined by the end user.
<b>Molecular weight:</b>	17/30kDa

<b>Cellular localization:</b>	Secretory protein
<b>Form:</b>	Lyophilized or Liquid
<b>Concentration:</b>	1mg/ml
<b>immunogen:</b>	KLH conjugated synthetic peptide derived from human IL-1 Beta:161-269/269
<b>Lsotype:</b>	IgG
<b>Purification:</b>	affinity purified by Protein A
<b>Storage Buffer:</b>	0.01M TBS(pH7.4) with 1% BSA, 0.03% Proclin300 and 50% Glycerol.
<b>Storage:</b>	Store at -20 °C for one year. Avoid repeated freeze/thaw cycles. The lyophilized antibody is stable at room temperature for at least one month and for greater than a year when kept at -20°C. When reconstituted in sterile pH 7.4 0.01M PBS or diluent of antibody the antibody is stable for at least two weeks at 2-4 °C.
<b>PubMed:</b>	<a href="#">PubMed</a>
<b>Product Detail:</b>	<p>The protein encoded by this gene is a member of the interleukin 1 cytokine family. This cytokine is produced by activated macrophages as a proprotein, which is proteolytically processed to its active form by caspase 1 (CASP1/ICE). This cytokine is an important mediator of the inflammatory response, and is involved in a variety of cellular activities, including cell proliferation, differentiation, and apoptosis. The induction of cyclooxygenase-2 (PTGS2/COX2) by this cytokine in the central nervous system (CNS) is found to contribute to inflammatory pain hypersensitivity. This gene and eight other interleukin 1 family genes form a cytokine gene cluster on chromosome 2. [provided by RefSeq, Jul 2008].</p> <p><b>Function:</b> Produced by activated macrophages, IL-1 stimulates thymocyte proliferation by inducing IL-2 release, B-cell maturation and proliferation, and fibroblast growth factor activity. IL-1 proteins are involved in the inflammatory response, being identified as endogenous pyrogens, and are reported to stimulate the release of prostaglandin and collagenase from synovial cells.</p> <p><b>Subunit:</b> Monomer.</p> <p><b>Subcellular Location:</b> Secreted. Note=The lack of a specific hydrophobic segment in the precursor sequence suggests that IL-1 is released by damaged cells or is secreted by a mechanism differing from that used for other secretory proteins.</p> <p><b>Similarity:</b> Belongs to the IL-1 family.</p> <p><b>SWISS:</b> P01584</p> <p><b>Gene ID:</b> 3553</p>

**Database links:**

[Entrez Gene: 3553](#)Human

[Entrez Gene: 16176](#)Mouse

[Entrez Gene: 24494](#)Rat

[Olim: 147720](#)Human

[SwissProt: P01584](#)Human

[SwissProt: P10749](#)Mouse

[SwissProt: Q63264](#)Rat

[Unigene: 126256](#)Human

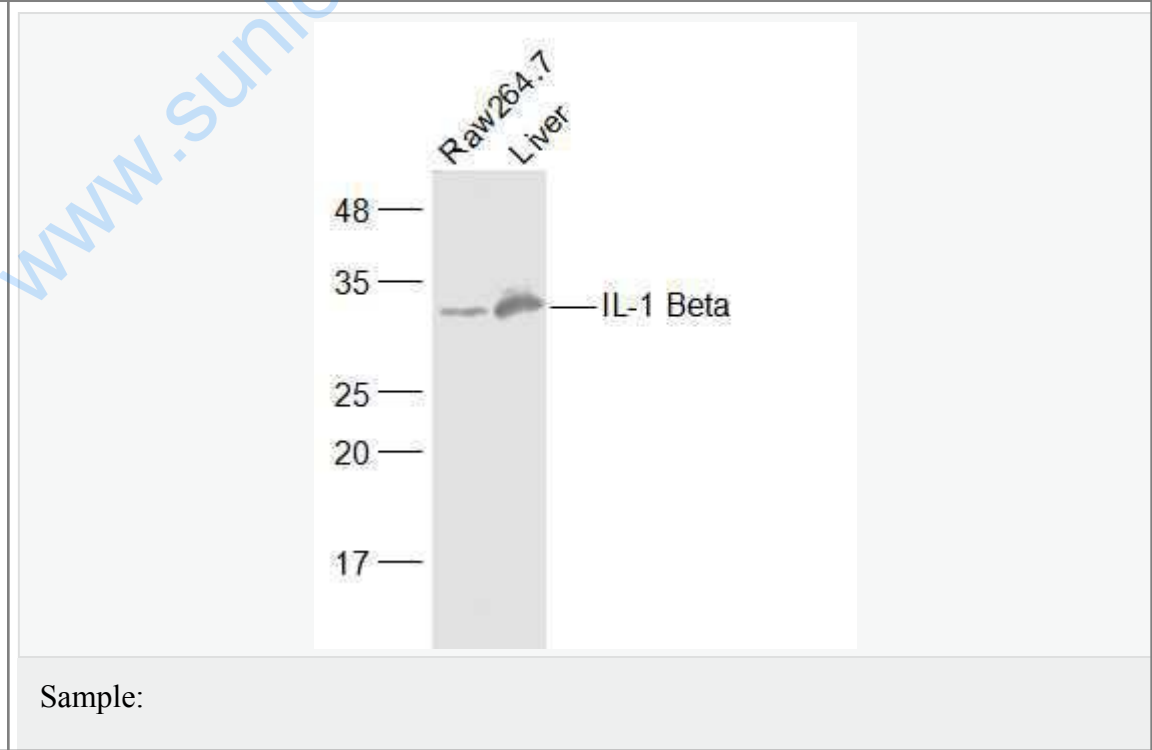
[Unigene: 222830](#)Mouse

[Unigene: 9869](#)Rat

**Important Note:**

This product as supplied is intended for research use only, not for use in human, therapeutic or diagnostic applications.

**Picture:**



Raw264.7(Mouse) Cell Lysate at 30 ug

Liver (Mouse) Lysate at 40 ug

Primary: Anti-IL-1 Beta (SL6319R) at 1/500 dilution

Secondary: IRDye800CW Goat Anti-Rabbit IgG at 1/20000 dilution

Predicted band size: 17/30 kD

Observed band size: 30 kD



Sample:

Brain (Mouse) Lysate at 40 ug

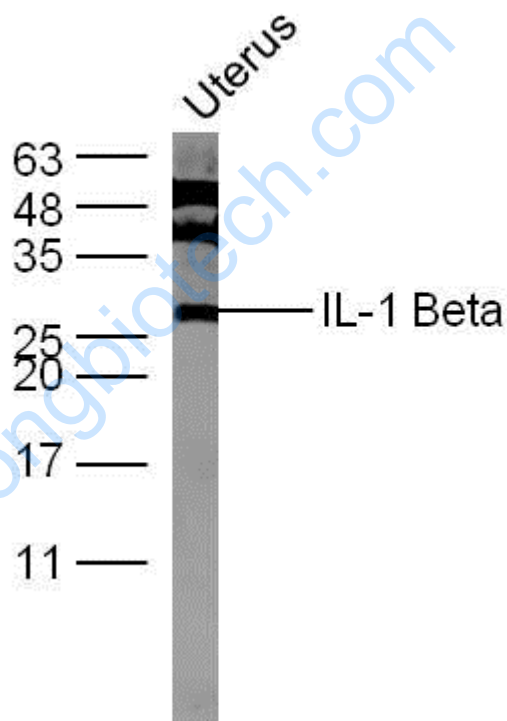
Intestine (Mouse) Lysate at 40 ug

Primary: Anti-IL-1 Beta (SL6319R) at 1/300 dilution

Secondary: HRP conjugated Goat-Anti-rabbit IgG (SL6319R) at 1/5000 dilution

Predicted band size: 17/30 kD

Observed band size: 30 kD



Sample:

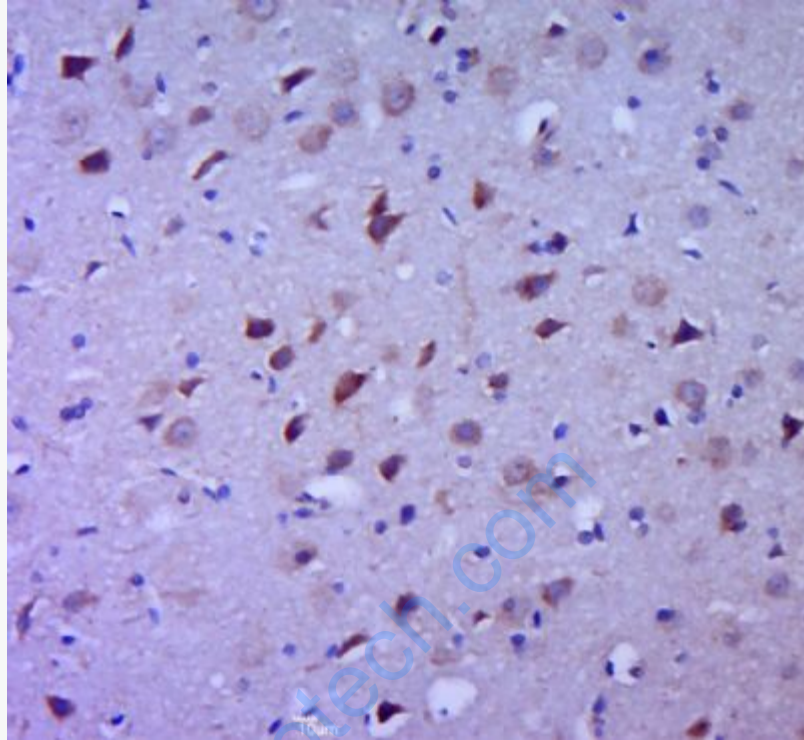
uterus (Mouse) Lysate at 40 ug

Primary: Anti-IL-1 Beta (Bs- 6319R) at 1/300 dilution

Secondary: IRDye800CW Goat Anti-Rabbit IgG at 1/20000 dilution

Predicted band size: 17/30 kD

Observed band size: 27 kD



Paraformaldehyde-fixed, paraffin embedded (rat brain tissue); Antigen retrieval by boiling in sodium citrate buffer (pH6.0) for 15min; Block endogenous peroxidase by 3% hydrogen peroxide for 20 minutes; Blocking buffer (normal goat serum) at 37°C for 30min; Antibody incubation with (IL-1 Beta) Polyclonal Antibody, Unconjugated (SL6319R) at 1:400 overnight at 4°C, followed by a conjugated secondary (sp-0023) for 20 minutes and DAB staining.