



## Rabbit Anti-Annexin A8 antibody

SL6322R

<b>Product Name:</b>	Annexin A8
<b>Chinese Name:</b>	膜粘连蛋白8抗体
<b>Alias:</b>	Annexin A8 like2; AnnexinA8; annexin A8L2; ANXA8; ANXA8L2; Annexin VIII; ANXA8_HUMAN.
<b>Organism Species:</b>	Rabbit
<b>Clonality:</b>	Polyclonal
<b>React Species:</b>	Human,Mouse,Rat,Dog,Cow,Horse,
<b>Applications:</b>	WB=1:500-2000IHC-P=1:400-800IHC-F=1:400-800IF=1:100-500 (Paraffin sections need antigen repair) not yet tested in other applications. optimal dilutions/concentrations should be determined by the end user.
<b>Molecular weight:</b>	37kDa
<b>Cellular localization:</b>	The cell membrane
<b>Form:</b>	Lyophilized or Liquid
<b>Concentration:</b>	1mg/ml
<b>immunogen:</b>	KLH conjugated synthetic peptide derived from human Annexin A8:101-200/327
<b>Lsotype:</b>	IgG
<b>Purification:</b>	affinity purified by Protein A
<b>Storage Buffer:</b>	0.01M TBS(pH7.4) with 1% BSA, 0.03% Proclin300 and 50% Glycerol.
<b>Storage:</b>	Store at -20 °C for one year. Avoid repeated freeze/thaw cycles. The lyophilized antibody is stable at room temperature for at least one month and for greater than a year when kept at -20°C. When reconstituted in sterile pH 7.4 0.01M PBS or diluent of antibody the antibody is stable for at least two weeks at 2-4 °C.
<b>PubMed:</b>	<a href="#">PubMed</a>
<b>Product Detail:</b>	Annexin A8 like 2 is a member of the annexin family of evolutionarily conserved Ca <sup>2+</sup> and phospholipid binding proteins. The protein may function as an anticoagulant that indirectly inhibits the thromboplastin-specific complex, and overexpression of this gene has been associated with acute myelocytic leukemia. A highly similar duplicated copy of this gene is found in close proximity on the long arm of chromosome 10.

**Function:**

This protein is an anticoagulant protein that acts as an indirect inhibitor of the thromboplastin-specific complex, which is involved in the blood coagulation cascade.

**Similarity:**

Belongs to the annexin family.  
Contains 4 annexin repeats.

**SWISS:**

P13928

**Gene ID:**

244

**Database links:**

[Entrez Gene: 244](#) Human

[Entrez Gene: 653145](#) Human

[Entrez Gene: 11752](#) Mouse

[Entrez Gene: 306283](#) Rat

[Omim: 602396](#) Human

[SwissProt: P13928](#) Human

[SwissProt: O35640](#) Mouse

[SwissProt: Q4FZU6](#) Rat

[Unigene: 535306](#) Human

[Unigene: 705389](#) Human

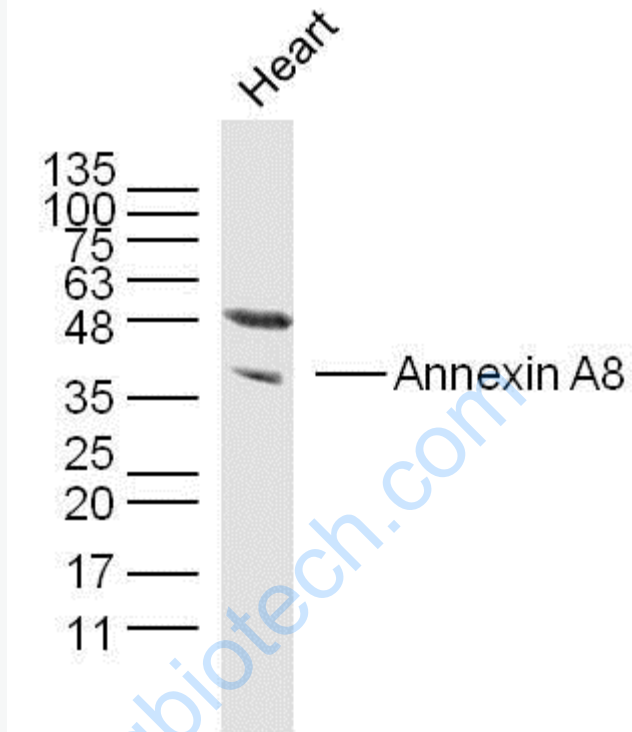
[Unigene: 3267](#) Mouse

[Unigene: 104326](#) Rat

**Important Note:**

This product as supplied is intended for research use only, not for use in human, therapeutic or diagnostic applications.

Picture:



Sample:

Heart (Mouse) Lysate at 40 ug

Primary: Anti- Annexin A8 (SL6322R) at 1/300 dilution

Secondary: IRDye800CW Goat Anti-Rabbit IgG at 1/20000 dilution

Predicted band size: 37 kD

Observed band size: 37 kD