



Rabbit Anti-Integrin alpha-3 heavy chain antibody

SL6328R

Product Name:	Integrin alpha-3 heavy chain
Chinese Name:	整合素 α 3重链抗体
Alias:	Integrin alpha 3 heavy chain; AA407068; Antigen identified by monoclonal; Integrin alpha-3; J143; CD49 antigen like family member C; CD49 antigen-like family member C; CD49c; CD49c antigen; FLJ34631; FLJ34704; FRP 2; FRP-2; FRP2; Galactoprotein B3; GAP B3; GAPB3; Integrin alpha 3; Integrin, alpha 3 (antigen CD49C, alpha 3 subunit of VLA-3 receptor); ITA3_HUMAN; ITGA 3; Itga3; MSK18; VCA 2; VCA2; Very late activation protein 3 receptor alpha 3 subunit; VL3A; VLA 3 alpha chain; VLA 3 subunit alpha; VLA-3 subunit alpha; VLA3a.
Organism Species:	Rabbit
Clonality:	Polyclonal
React Species:	Human,Mouse,Rat,Dog,Pig,Cow,Rabbit,Sheep,
Applications:	WB=1:500-2000ELISA=1:500-1000IHC-F=1:400-800ICC=1:100-500IF=1:100-500 (Paraffin sections need antigen repair) not yet tested in other applications. optimal dilutions/concentrations should be determined by the end user.
Molecular weight:	93/114kDa
Cellular localization:	The cell membrane
Form:	Lyophilized or Liquid
Concentration:	1mg/ml
immunogen:	KLH conjugated synthetic peptide derived from human Integrin alpha-3 heavy chain:33-100/1051<Extracellular>
Lsotype:	IgG
Purification:	affinity purified by Protein A
Storage Buffer:	Preservative: 15mM Sodium Azide, Constituents: 1% BSA, 0.01M PBS, pH 7.4
Storage:	Store at -20 °C for one year. Avoid repeated freeze/thaw cycles. The lyophilized antibody is stable at room temperature for at least one month and for greater than a year when kept at -20°C. When reconstituted in sterile pH 7.4 0.01M PBS or diluent of antibody the antibody is stable for at least two weeks at 2-4 °C.
PubMed:	PubMed

The protein encoded by this gene belongs to the family of integrins. Integrins are heterodimeric integral membrane proteins composed of an alpha chain and a beta chain, and function as cell surface adhesion molecules. This gene encodes alpha 3 subunit, which undergoes post-translational cleavage in the extracellular domain to yield disulfide-linked light and heavy chains that join with beta 1 subunit to form an integrin that interacts with many extracellular-matrix proteins. Alternatively spliced transcript variants encoding different isoforms have been identified for this gene. [provided by RefSeq, Oct 2008]

Function:

Integrin alpha-3/beta-1 is a receptor for fibronectin, laminin, collagen, epiligrin, thrombospondin and CSPG4. Alpha-3/beta-1 may mediate with LGALS3 the stimulation by CSPG4 of endothelial cells migration.

Subunit:

Heterodimer of an alpha and a beta subunit. The alpha subunit is composed of an heavy and a light chain linked by a disulfide bond. Alpha-3 associates with beta-1. Interacts with HPS5.

Subcellular Location:

Membrane; Single-pass type I membrane protein.

Tissue Specificity:

Isoform 1 is widely expressed. Isoform 2 is expressed in brain and heart. In brain, both isoforms are exclusively expressed on vascular smooth muscle cells, whereas in heart isoform 1 is strongly expressed on vascular smooth muscle cells, isoform 2 is detected only on endothelial vein cells.

Post-translational modifications:

Isoform 1, but not isoform 2, is phosphorylated on serine residues. Phosphorylation increases after phorbol 12-myristate 13-acetate stimulation.

Similarity:

Belongs to the integrin alpha chain family.
Contains 7 FG-GAP repeats.

SWISS:

P26006

Gene ID:

3675

Database links:

[Entrez Gene: 508490](#) Cow

Product Detail:

[Entrez Gene: 491074](#) Dog

[Entrez Gene: 100056202](#) Horse

[Entrez Gene: 3675](#) Human

[Entrez Gene: 100386753](#) Marmoset (common)

[Entrez Gene: 16400](#) Mouse

[Omin: 605025](#) Human

[SwissProt: F1MMS9](#) Cow

[SwissProt: P26006](#) Human

[SwissProt: Q62470](#) Mouse

[Unigene: 265829](#) Human

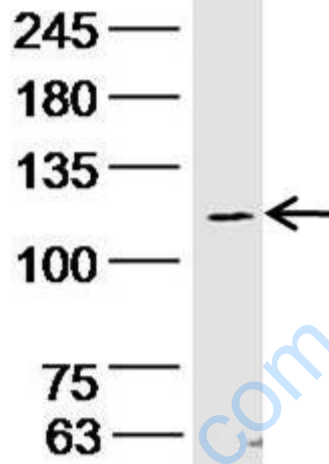
[Unigene: 57035](#) Mouse

Important Note:

This product as supplied is intended for research use only, not for use in human, therapeutic or diagnostic applications.

www.sublongbiotech.com

Picture:



Sample: Cerebrum(Mouse) Tissue Lysate at 30 ug

Primary: Anti-ITGA3 (SL6328R) at 1/300 dilution

Secondary: IRDye800CW Goat Anti-Rabbit IgG at 1/20000 dilution

Predicted band size: 93,114 kD

Observed band size: 114 kD