



Rabbit Anti-PTK5/FRK antibody

SL6382R

Product Name:	PTK5/FRK
Chinese Name:	胃肠道相关酪氨酸激酶抗体(蛋白酪氨酸激酶5)
Alias:	Beta cell Src homology tyrosine kinase; BSK; BSK/IYK; C85044; Frk; Frk fyn related kinase; FRK_HUMAN; FYN related kinase; FYN-related kinase; GASK; Gastrointestinal associated kinase; Gastrointestinal associated tyrosine kinase; GTK; Intestine tyrosine kinase; Nuclear tyrosine protein kinase RAK; Protein-tyrosine kinase 5; PTK5; RAK; Tyrosine protein kinase FRK; Tyrosine-protein kinase FRK.
Organism Species:	Rabbit
Clonality:	Polyclonal
React Species:	Human,Mouse,Rat,Chicken,Pig,Cow,Horse,Rabbit,
Applications:	WB=1:500-2000ELISA=1:500-1000IHC-P=1:400-800IHC-F=1:400-800IF=1:100-500 (Paraffin sections need antigen repair) not yet tested in other applications. optimal dilutions/concentrations should be determined by the end user.
Molecular weight:	58kDa
Cellular localization:	The nucleuscytoplasmic
Form:	Lyophilized or Liquid
Concentration:	1mg/ml
immunogen:	KLH conjugated synthetic peptide derived from human FRK/PTK5:331-430/505
Lsotype:	IgG
Purification:	affinity purified by Protein A
Storage Buffer:	0.01M TBS(pH7.4) with 1% BSA, 0.03% Proclin300 and 50% Glycerol.
Storage:	Store at -20 °C for one year. Avoid repeated freeze/thaw cycles. The lyophilized antibody is stable at room temperature for at least one month and for greater than a year when kept at -20°C. When reconstituted in sterile pH 7.4 0.01M PBS or diluent of antibody the antibody is stable for at least two weeks at 2-4 °C.
PubMed:	PubMed
Product Detail:	The protein encoded by this gene belongs to the TYR family of protein kinases. This tyrosine kinase is a nuclear protein and may function during G1 and S phase of the cell cycle and suppress growth. [provided by RefSeq, Jul 2008].

Function:

Non-receptor tyrosine-protein kinase that negatively regulates cell proliferation. Positively regulates PTEN protein stability through phosphorylation of PTEN on 'Tyr-336', which in turn prevents its ubiquitination and degradation, possibly by reducing its binding to NEDD4. May function as a tumor suppressor.

Subunit:

Interacts (via the SH3-domain) with PTEN. Interacts with RB1.

Subcellular Location:

Cytoplasm. Nucleus. Note=Predominantly found in the nucleus, with a small fraction found in the cell periphery.

Tissue Specificity:

Predominantly expressed in epithelial derived cell lines and tissues, especially normal liver, kidney, breast and colon.

Similarity:

Belongs to the protein kinase superfamily. Tyr protein kinase family. SRC subfamily.

SWISS:

P42685

Gene ID:

2444

Database links:

[Entrez Gene: 2444](#) Human

[Entrez Gene: 14302](#) Mouse

[Entrez Gene: 79209](#) Rat

[Omim: 606573](#) Human

[SwissProt: P42685](#) Human

[SwissProt: Q922K9](#) Mouse

[SwissProt: Q62662](#) Rat

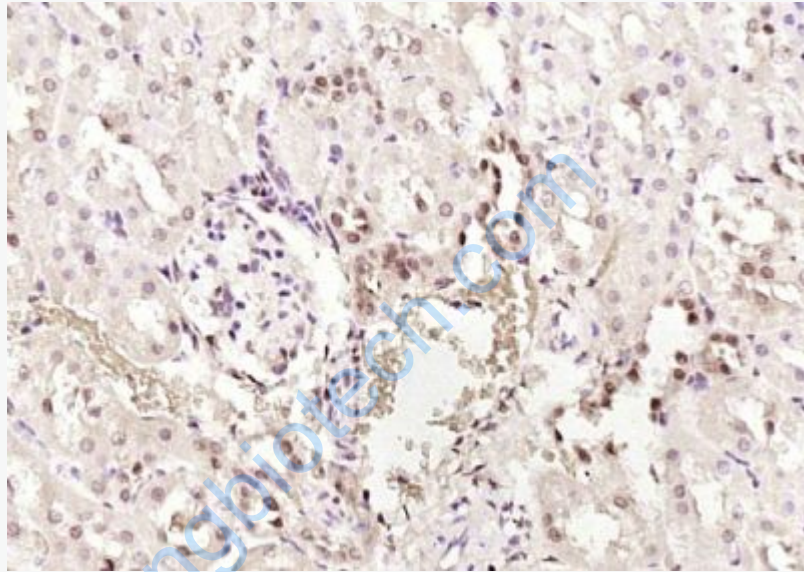
[Unigene: 89426](#) Human

[Unigene: 332432](#) Mouse

[Unigene: 10556](#) Rat

Important Note:

This product as supplied is intended for research use only, not for use in human, therapeutic or diagnostic applications.



Picture:

Paraformaldehyde-fixed, paraffin embedded (rat kidney); Antigen retrieval by boiling in sodium citrate buffer (pH6.0) for 15min; Block endogenous peroxidase by 3% hydrogen peroxide for 20 minutes; Blocking buffer (normal goat serum) at 37°C for 30min; Antibody incubation with (PTK5) Polyclonal Antibody, Unconjugated (SL6382R) (sp-0023) instructions and DAB staining.