



Rabbit Anti-Gas1 antibody

SL6385R

Product Name:	Gas1
Chinese Name:	生长休止特定蛋白1抗体
Alias:	Growth-arrest-specific protein 1 precursor; Gas 1; Gas-1; GAS1 HUMAN.
Organism Species:	Rabbit
Clonality:	Polyclonal
React Species:	Human,Mouse,Rat,Chicken,Dog,Pig,Cow,Sheep,
Applications:	WB=1:500-2000ELISA=1:500-1000IHC-P=1:400-800IHC-F=1:400-800IF=1:100-500 (Paraffin sections need antigen repair) not yet tested in other applications. optimal dilutions/concentrations should be determined by the end user.
Molecular weight:	29/32kDa
Cellular localization:	The cell membrane
Form:	Lyophilized or Liquid
Concentration:	1mg/ml
immunogen:	KLH conjugated synthetic peptide derived from human Gas1:101-200/345
Lsotype:	IgG
Purification:	affinity purified by Protein A
Storage Buffer:	0.01M TBS(pH7.4) with 1% BSA, 0.03% Proclin300 and 50% Glycerol.
Storage:	Store at -20 °C for one year. Avoid repeated freeze/thaw cycles. The lyophilized antibody is stable at room temperature for at least one month and for greater than a year when kept at -20°C. When reconstituted in sterile pH 7.4 0.01M PBS or diluent of antibody the antibody is stable for at least two weeks at 2-4 °C.
PubMed:	PubMed
Product Detail:	<p>Growth arrest-specific 1 plays a role in growth suppression. GAS1 blocks entry to S phase and prevents cycling of normal and transformed cells. Gas1 is a putative tumor suppressor gene.</p> <p>Function: Specific growth arrest protein involved in growth suppression. Blocks entry to S phase. Prevents cycling of normal and transformed cells.</p>

Subcellular Location:

Cell membrane; Lipid-anchor, GPI-anchor

SWISS:

P54826

Gene ID:

2619

Database links:

[Entrez Gene: 2619](#)Human

[Entrez Gene: 14451](#)Mouse

[Omid: 139185](#)Human

[SwissProt: P54826](#)Human

[SwissProt: Q01721](#)Mouse

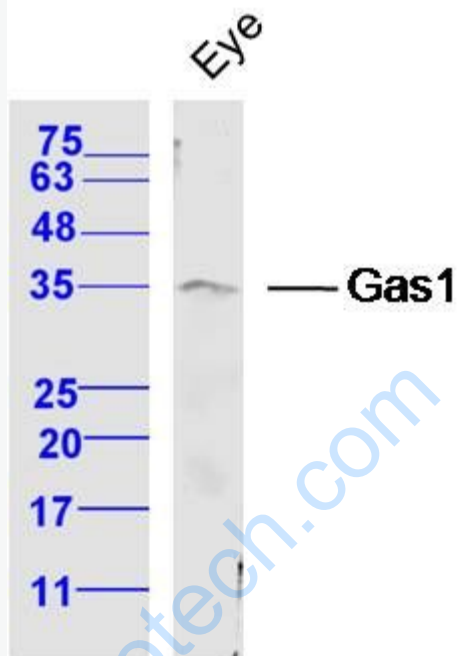
[Unigene: 65029](#)Human

[Unigene: 22701](#)Mouse

Important Note:

This product as supplied is intended for research use only, not for use in human, therapeutic or diagnostic applications.

Picture:



Sample: Eye (Mouse) Lysate at 40 ug

Primary: Anti-Gas1 (SL6385R) at 1/300 dilution

Secondary: IRDye800CW Goat Anti-Rabbit IgG at 1/20000 dilution

Predicted band size: 36 kD

Observed band size: 36 kD