



Rabbit Anti-TFDP3 antibody

SL6400R

Product Name:	TFDP3
Chinese Name:	转录因子DP3/肝癌相关抗原661抗体
Alias:	Cancer/testis antigen 30; CT30; E2F-like; HCA661; Hepatocellular carcinoma-associated antigen 661; TFDP3; Transcription factor Dp family member 3; TFDP3 HUMAN.
Organism Species:	Rabbit
Clonality:	Polyclonal
React Species:	Human,Mouse,Rat,Chicken,Dog,Cow,Horse,Rabbit,
Applications:	WB=1:500-2000ELISA=1:500-1000IHC-P=1:400-800IHC-F=1:400-800IF=1:100-500 (Paraffin sections need antigen repair) not yet tested in other applications. optimal dilutions/concentrations should be determined by the end user.
Molecular weight:	45kDa
Cellular localization:	The nucleuscytoplasmic
Form:	Lyophilized or Liquid
Concentration:	1mg/ml
immunogen:	KLH conjugated synthetic peptide derived from human TFDP3:301-405/405
Lsotype:	IgG
Purification:	affinity purified by Protein A
Storage Buffer:	0.01M TBS(pH7.4) with 1% BSA, 0.03% Proclin300 and 50% Glycerol.
Storage:	Store at -20 °C for one year. Avoid repeated freeze/thaw cycles. The lyophilized antibody is stable at room temperature for at least one month and for greater than a year when kept at -20°C. When reconstituted in sterile pH 7.4 0.01M PBS or diluent of antibody the antibody is stable for at least two weeks at 2-4 °C.
PubMed:	PubMed
Product Detail:	This gene encodes a member of the DP family of transcription factors. These factors heterodimerize with E2F proteins to enhance their DNA-binding activity and promote transcription from E2F target genes. This protein functions as a negative regulator and inhibits the DNA binding and transcriptional activities of E2F factors.

Function:

Competitive inhibitor of E2F-mediated transactivation activity. Impairs E2F-mediated cell-cycle progression from G(1) to S phase.

Subunit:

Heterodimer: with E2F family members. TFDP3/E2F heterodimers do not bind DNA and repress E2F-dependent transcriptional activity.

Subcellular Location:

Nucleus. Cytoplasm. Note=Translocates to the nucleus on heterodimerization with E2F family members.

Tissue Specificity:

Predominantly expressed in testis. Low level of expression in pancreas. Highly expressed in ovarian and colon cancer cell lines.

Similarity:

Belongs to the E2F/DP family.

SWISS:

Q5H9I0

Gene ID:

51270

Database links:

[Entrez Gene: 51270](#)Human

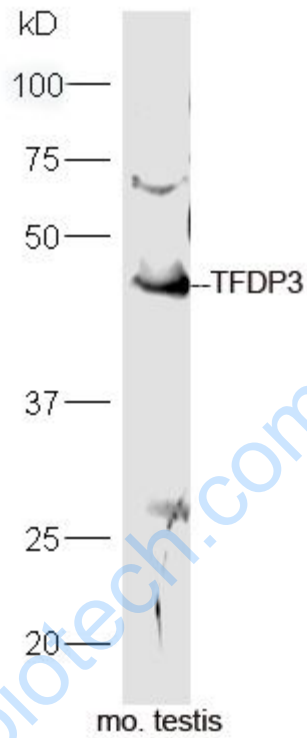
[SwissProt: Q5H9I0](#)Human

[Unigene: 142908](#)Human

Important Note:

This product as supplied is intended for research use only, not for use in human, therapeutic or diagnostic applications.

Picture:



Sample: Testis (Mouse) Lysate at 40 ug

Primary: Anti-TFDP3 (SL6400R) at 1/300 dilution

Secondary: HRP conjugated Goat-Anti-rabbit IgG (SL6400R) at 1/5000 dilution

Predicted band size: 45 kD

Observed band size: 45 kD