



## Rabbit Anti-phospho-PI3 Kinase p110 beta (Ser1070) antibody

SL6417R

|                               |  |
|-------------------------------|--|
| <b>Product Name:</b>          | phospho-PI3 Kinase p110 beta (Ser1070)   |
| <b>Chinese Name:</b>          | 磷酸化磷脂酰肌醇激酶(PI3K $\beta$ ) 抗体   |
| <b>Alias:</b>                 | PI3-kinase p110 subunit beta; p-PI3K $\beta$ (Ser1070); PI 3-kinase C2 $\beta$ ; p110 BETA; p110Beta; Phosphatidylinositol 3 kinase catalytic beta polypeptide; Phosphatidylinositol 4 5 bisphosphate 3 kinase 110 kDa catalytic subunit beta; Phosphatidylinositol 4 5 bisphosphate 3 kinase catalytic subunit beta isoform; Phosphatidylinositol-4; Phosphoinositide 3 kinase catalytic beta polypeptide; PI3 kinase p110 subunit beta; PI3-kinase subunit beta; PI3K; PI3K beta; PI3K-beta; PI3Kbeta; PI3KCB; PIK3C1; Pik3cb; PK3CB_HUMAN; PtdIns 3 kinase p110; PtdIns-3-kinase subunit beta; PtdIns-3-kinase subunit p110-beta; 5-bisphosphate 3-kinase 110 kDa catalytic subunit beta; 5-bisphosphate 3-kinase catalytic subunit beta isoform. |
| <b>Organism Species:</b>      | Rabbit   |
| <b>Clonality:</b>             | Polyclonal   |
| <b>React Species:</b>         | Human,Mouse,Rat,Chicken,Dog,Pig,Cow,Horse,Guinea Pig,  |
| <b>Applications:</b>          | ELISA=1:500-1000IHC-P=1:400-800IHC-F=1:400-800IF=1:100-500 (Paraffin sections need antigen repair)<br>not yet tested in other applications.<br>optimal dilutions/concentrations should be determined by the end user.  |
| <b>Molecular weight:</b>      | 110-123kDa   |
| <b>Cellular localization:</b> | The nucleuscytoplasmic   |
| <b>Form:</b>                  | Lyophilized or Liquid  |
| <b>Concentration:</b>         | 1mg/ml   |
| <b>immunogen:</b>             | KLH conjugated synthesised phosphopeptide derived from human PI3 Kinase p110 beta around the phosphorylation site of Ser1070:YR(p-S)   |
| <b>Lsotype:</b>               | IgG  |
| <b>Purification:</b>          | affinity purified by Protein A   |
| <b>Storage Buffer:</b>        | 0.01M TBS(pH7.4) with 1% BSA, 0.03% Proclin300 and 50% Glycerol.   |

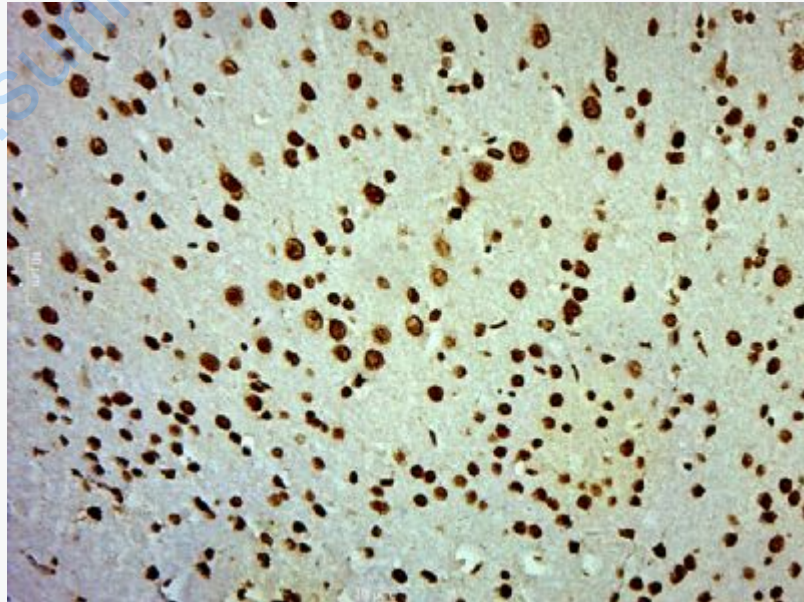
|                        |   |
|------------------------|---|
| <b>Storage:</b>        | Store at -20 °C for one year. Avoid repeated freeze/thaw cycles. The lyophilized antibody is stable at room temperature for at least one month and for greater than a year when kept at -20°C. When reconstituted in sterile pH 7.4 0.01M PBS or diluent of antibody the antibody is stable for at least two weeks at 2-4 °C.   |
| <b>PubMed:</b>         | <a href="#">PubMed</a>  |
| <b>Product Detail:</b> | <p>Phosphoinositide 3-kinases (PI 3-Ks) phosphorylate the 3'-OH position of the inositol ring of inositol lipids. They act as participants in signaling pathways that regulate cell growth by virtue of their activation in response to various mitogenic stimuli. PI 3-Ks are composed of a catalytic subunit, such as PI 3-kinase C2<math>\beta</math> (PIK3CB) and an adaptor subunit. PI 3-kinase C2<math>\beta</math>, also known as p110-<math>\beta</math>, is a 1,070 amino acid protein that shares 42% identity with p110 of cow origin. It is expressed in several human and rodent cell lines. Studies predict that PI 3-kinase C2<math>\beta</math> has a role in modulating the formation and stability of <math>\alpha</math>2B (ITGA2B)/<math>\beta</math>3 (ITGB3) Integrin adhesion bonds, which are essential in shear force-induced platelet activation. Phosphorylates PtdIns, PtdIns4P and PtdIns(4,5)P2 with a preference for PtdIns(4,5)P2.</p> <p><b>Subunit:</b><br/>Heterodimer of a catalytic subunit PIK3CB and a p85 regulatory subunit (PIK3R1, PIK3R2 or PIK3R3). Interaction with PIK3R2 is required for nuclear localization and nuclear export. Part of a complex with PIK3R1 and PTEN. Binding to PTEN may antagonize the lipid kinase activity under normal growth conditions. Part of a complex involved in autophagosome formation composed of PIK3C3 and PIK3R4 (By similarity). Interacts with BECN1, ATG14 and RAB5A.</p> <p><b>Subcellular Location:</b><br/>Cytoplasm. Nucleus. Note=Interaction with PIK3R2 is required for nuclear localization and export.</p> <p><b>Tissue Specificity:</b><br/>Expressed ubiquitously.</p> <p><b>Similarity:</b><br/>Belongs to the PI3/PI4-kinase family.<br/>Contains 1 C2 PI3K-type domain.<br/>Contains 1 PI3K-ABD domain.<br/>Contains 1 PI3K-RBD domain.<br/>Contains 1 PI3K/PI4K domain.<br/>Contains 1 PIK helical domain.</p> <p><b>SWISS:</b><br/>P42338</p> <p><b>Gene ID:</b><br/>5291</p> <p><b>Database links:</b></p> |

[Entrez Gene: 5291](#)Human  
[Entrez Gene: 74769](#)Mouse  
[Entrez Gene: 85243](#)Rat  
[Omim: 602925](#)Human  
[SwissProt: P42338](#)Human  
[SwissProt: Q24JU2](#)Human  
[SwissProt: Q3U4Q1](#)Mouse  
[SwissProt: Q8BTI9](#)Mouse  
[SwissProt: Q9Z1L0](#)Rat  
[Unigene: 239818](#)Human  
[Unigene: 213128](#)Mouse  
[Unigene: 44268](#)Rat

**Important Note:**

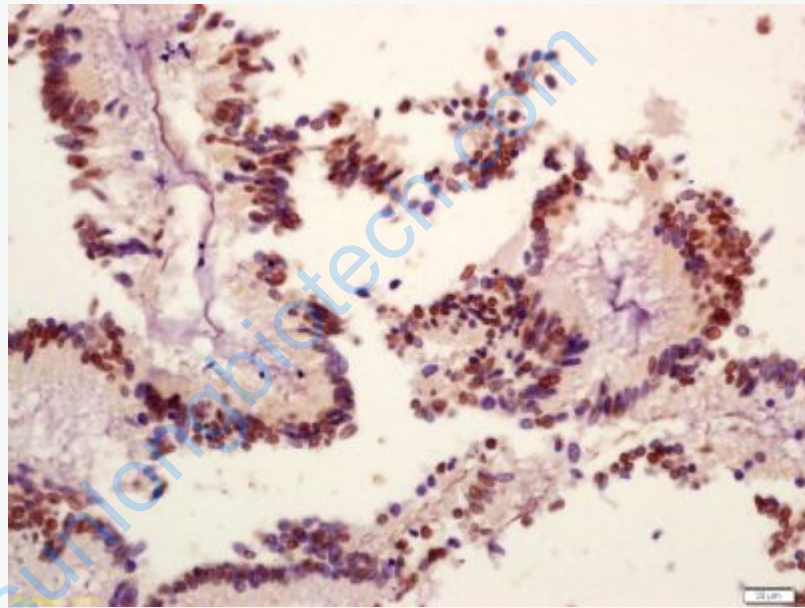
This product as supplied is intended for research use only, not for use in human, therapeutic or diagnostic applications.

**Picture:**



Paraformaldehyde-fixed, paraffin embedded (Mouse brain); Antigen retrieval by

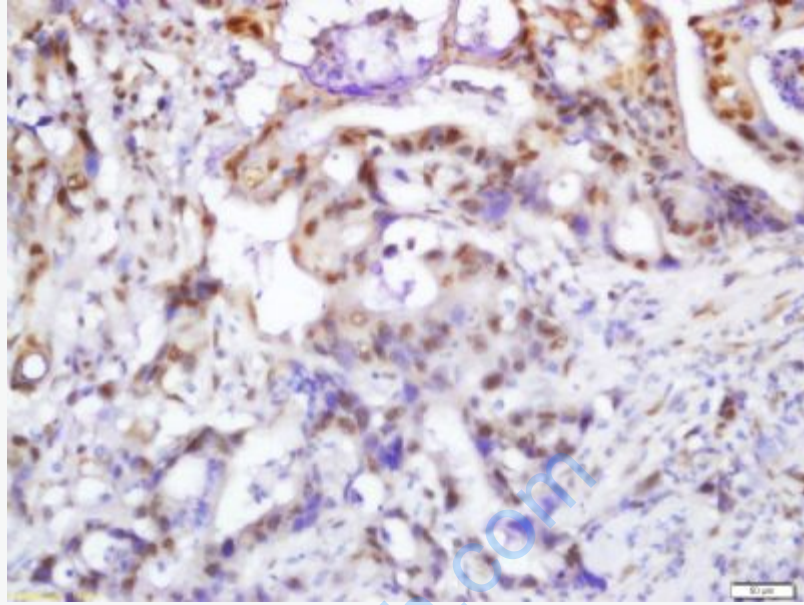
boiling in sodium citrate buffer (pH6.0) for 15min; Block endogenous peroxidase by 3% hydrogen peroxide for 20 minutes; Blocking buffer (normal goat serum) at 37°C for 30min; Antibody incubation with (phospho-PI3 Kinase p110 beta(Ser1070)) Polyclonal Antibody, Unconjugated (SL6417R) at 1:500 overnight at 4°C, followed by a conjugated secondary (sp-0023) for 20 minutes and DAB staining.



Tissue/cell: human colon carcinoma; 4% Paraformaldehyde-fixed and paraffin-embedded;

Antigen retrieval: citrate buffer ( 0.01M, pH 6.0 ), Boiling bathing for 15min; Block endogenous peroxidase by 3% Hydrogen peroxide for 30min; Blocking buffer (normal goat serum,C-0005) at 37°C for 20 min;

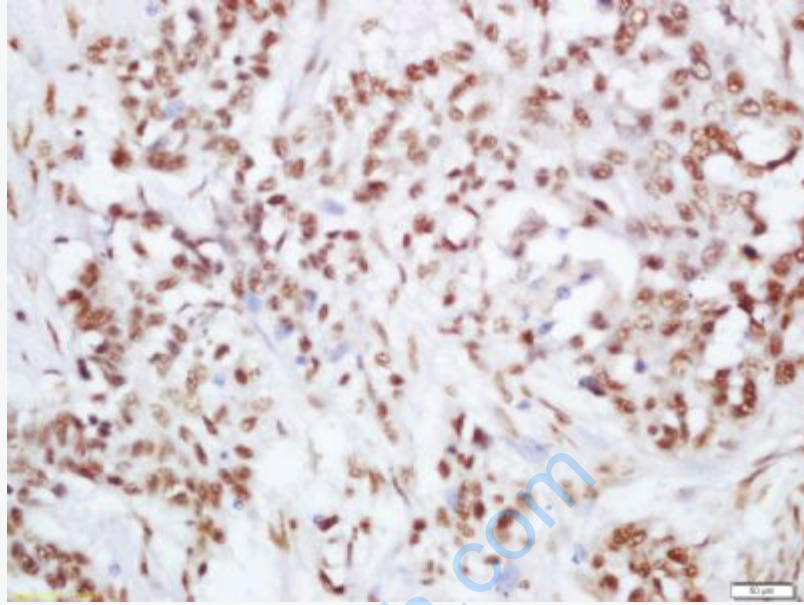
Incubation: Anti-phospho-PI3 Kinase p110 beta(Ser1070) Polyclonal Antibody, Unconjugated (SL6417R) 1:200, overnight at 4°C, followed by conjugation to the secondary antibody(SP-0023) and DAB(C-0010) staining



Tissue/cell: human gastric carcinoma; 4% Paraformaldehyde-fixed and paraffin-embedded;

Antigen retrieval: citrate buffer ( 0.01M, pH 6.0 ), Boiling bathing for 15min; Block endogenous peroxidase by 3% Hydrogen peroxide for 30min; Blocking buffer (normal goat serum,C-0005) at 37°C for 20 min;

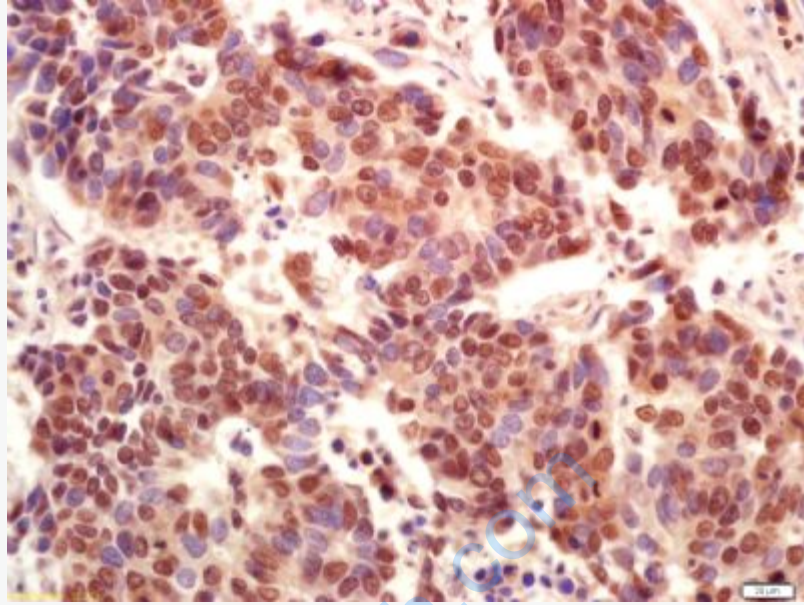
Incubation: Anti-phospho-PI3 Kinase p110 beta(Ser1070) Polyclonal Antibody, Unconjugated (SL6417R) 1:200, overnight at 4°C, followed by conjugation to the secondary antibody(SP-0023) and DAB(C-0010) staining



Tissue/cell: human lung carcinoma; 4% Paraformaldehyde-fixed and paraffin-embedded;

Antigen retrieval: citrate buffer ( 0.01M, pH 6.0 ), Boiling bathing for 15min; Block endogenous peroxidase by 3% Hydrogen peroxide for 30min; Blocking buffer (normal goat serum,C-0005) at 37°C for 20 min;

Incubation: Anti-phospho-PI3 Kinase p110 beta(Ser1070) Polyclonal Antibody, Unconjugated (SL6417R) 1:200, overnight at 4°C, followed by conjugation to the secondary antibody(SP-0023) and DAB(C-0010) staining



Tissue/cell: human lung carcinoma; 4% Paraformaldehyde-fixed and paraffin-embedded;

Antigen retrieval: citrate buffer ( 0.01M, pH 6.0 ), Boiling bathing for 15min; Block endogenous peroxidase by 3% Hydrogen peroxide for 30min; Blocking buffer (normal goat serum,C-0005) at 37°C for 20 min;

Incubation: Anti-phospho-PI3 Kinase p110 beta(Ser1070) Polyclonal Antibody, Unconjugated (SL6417R) 1:200, overnight at 4°C, followed by conjugation to the secondary antibody(SP-0023) and DAB(C-0010) staining