



Rabbit Anti-phospho-PP2A alpha+beta (Tyr307) antibody

SL6419R

Product Name:	phospho-PP2A alpha+beta (Tyr307)
Chinese Name:	磷酸化蛋白磷酸酶2A (PP2A α) 抗体
Alias:	p-PP2A-C α / β ; PP2A alpha (phospho Y307); p-PP2A alpha(Y307); PP2A A; PP2A alpha; PP2A B; PP2A beta; PP2Ac; PP2C alpha; PP2C beta; PP2CA; PP2CB; PPP2CA; PPP2CB; Protein phosphatase 2 (formerly 2A) catalytic subunit alpha isoform; Protein phosphatase 2 (formerly 2A) catalytic subunit beta isoform; Protein phosphatase 2; Protein phosphatase 2 catalytic subunit alpha isoform; Protein phosphatase 2 catalytic subunit beta isoform; Protein Phosphatase 2A; Protein phosphatase type 2A catalytic subunit; Replication protein C; RP C; Serine/threonine protein phosphatase 2A catalytic subunit alpha isoform; Serine/threonine protein phosphatase 2A catalytic subunit beta isoform; Serine/threonine protein phosphatase.
Organism Species:	Rabbit
Clonality:	Polyclonal
React Species:	Human,Mouse,Rat,Chicken,Dog,Pig,Cow,
Applications:	WB=1:500-2000ELISA=1:500-1000IHC-P=1:400-800IHC-F=1:400-800IF=1:100-500 (Paraffin sections need antigen repair) not yet tested in other applications. optimal dilutions/concentrations should be determined by the end user.
Molecular weight:	34kDa
Cellular localization:	The nucleuscytoplasmic
Form:	Lyophilized or Liquid
Concentration:	1mg/ml
immunogen:	KLH conjugated synthesised phosphopeptide derived from human PPP2CA around the phosphorylation site of Tyr307:PD(p-Y)FL
Lsotype:	IgG
Purification:	affinity purified by Protein A
Storage Buffer:	0.01M TBS(pH7.4) with 1% BSA, 0.03% Proclin300 and 50% Glycerol.

Storage:	Store at -20 °C for one year. Avoid repeated freeze/thaw cycles. The lyophilized antibody is stable at room temperature for at least one month and for greater than a year when kept at -20°C. When reconstituted in sterile pH 7.4 0.01M PBS or diluent of antibody the antibody is stable for at least two weeks at 2-4 °C.
PubMed:	PubMed
Product Detail:	<p>This gene encodes the phosphatase 2A catalytic subunit. Protein phosphatase 2A is one of the four major Ser/Thr phosphatases, and it is implicated in the negative control of cell growth and division. It consists of a common heteromeric core enzyme, which is composed of a catalytic subunit and a constant regulatory subunit, that associates with a variety of regulatory subunits. This gene encodes an alpha isoform of the catalytic subunit. [provided by RefSeq, Jul 2008].</p> <p>Function: PP2A can modulate the activity of phosphorylase B kinase casein kinase 2, mitogen-stimulated S6 kinase, and MAP-2 kinase. Cooperates with SGOL2 to protect centromeric cohesin from separase-mediated cleavage in oocytes specifically during meiosis I (By similarity). Can dephosphorylate SV40 large T antigen and p53/TP53. Dephosphorylates SV40 large T antigen, preferentially on serine residues 120, 123, 677, and perhaps 679. The C subunit was most active, followed by the AC form, which was more active than the ABC form, and activity of all three forms was strongly stimulated by manganese, and to a lesser extent by magnesium. Dephosphorylation by the AC form, but not C or ABC form is inhibited by small T antigen. Activates RAF1 by dephosphorylating it at 'Ser-259'.</p> <p>Subunit: PP2A consists of a common heterodimeric core enzyme, composed of PPP2CA a 36 kDa catalytic subunit (subunit C) and PPP2R1A a 65 kDa constant regulatory subunit (PR65 or subunit A), that associates with a variety of regulatory subunits. Proteins that associate with the core dimer include three families of regulatory subunits B (the R2/B/PR55/B55, R3/B''/PR72/PR130/PR59 and R5/B'/B56 families), the 48 kDa variable regulatory subunit, viral proteins, and cell signaling molecules. Interacts with NXN; the interaction is direct (By similarity). Interacts with TP53, SGOL1 and SGOL2. Interacts with AXIN1; the interaction dephosphorylates AXIN1. Interacts with PIM3; this interaction promotes dephosphorylation, ubiquitination and proteasomal degradation of PIM3. Interacts with RAF1.</p> <p>Subcellular Location: Cytoplasm. Nucleus. Chromosome, centromere. Cytoplasm, cytoskeleton, spindle pole. Note=In prometaphase cells, but not in anaphase cells, localizes at centromeres. During mitosis, also found at spindle poles. Centromeric localization requires the presence of SGOL2.</p> <p>Post-translational modifications: Reversibly methyl esterified on Leu-309. Carboxyl methylation may play a role in holoenzyme assembly, enhancing the affinity of the PP2A core enzyme for some, but not all, regulatory subunits. It varies during the cell cycle.</p>

Phosphorylation of either threonine (by autophosphorylation-activated protein kinase) or tyrosine results in inactivation of the phosphatase. Auto-dephosphorylation has been suggested as a mechanism for reactivation.

Similarity:

Belongs to the PPP phosphatase family. PP-1 subfamily.

SWISS:

P67775

Gene ID:

5515

Database links:

[Entrez Gene: 416318](#)Chicken

[Entrez Gene: 282320](#)Cow

[Entrez Gene: 5515](#)Human

[Entrez Gene: 19052](#)Mouse

[Entrez Gene: 397656](#)Pig

[Entrez Gene: 100009252](#)Rabbit

[Entrez Gene: 24672](#)Rat

[Omim: 176915](#)Human

[SwissProt: P48463](#)Chicken

[SwissProt: P67774](#)Cow

[SwissProt: P67775](#)Human

[SwissProt: P63330](#)Mouse

[SwissProt: P67776](#)Pig

[SwissProt: P67777](#)Rabbit

[SwissProt: P63331](#)Rat

[Unigene: 105818](#)Human

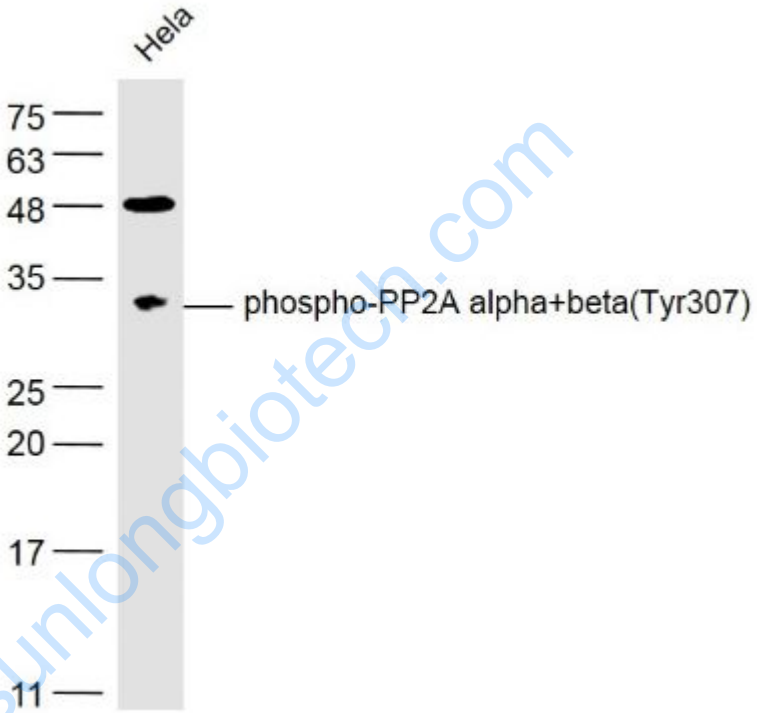
[Unigene: 260288](#)Mouse

[Unigene: 1271Rat](#)

Important Note:

This product as supplied is intended for research use only, not for use in human, therapeutic or diagnostic applications.

Picture:



Sample:

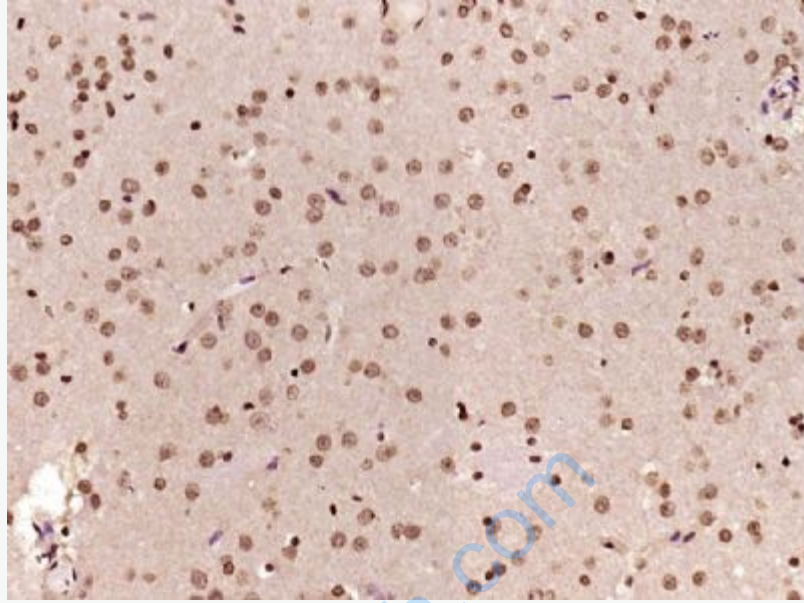
HeLa(Human) Cell Lysate at 30 ug

Primary: Anti-phospho-PP2A alpha+beta(Tyr307) (SL6419R) at 1/500 dilution

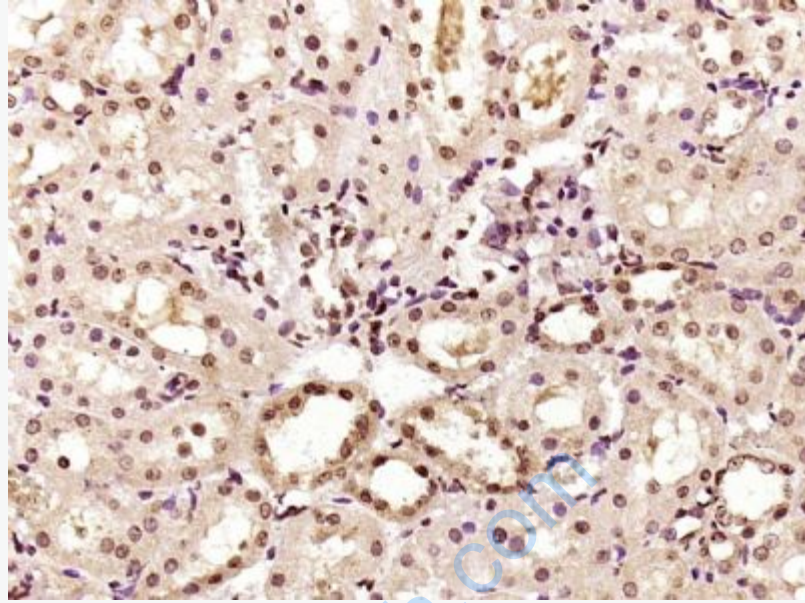
Secondary: IRDye800CW Goat Anti-Rabbit IgG at 1/20000 dilution

Predicted band size: 34 kD

Observed band size: 34 kD



Paraformaldehyde-fixed, paraffin embedded (Rat brain); Antigen retrieval by boiling in sodium citrate buffer (pH6.0) for 15min; Block endogenous peroxidase by 3% hydrogen peroxide for 20 minutes; Blocking buffer (normal goat serum) at 37°C for 30min; Antibody incubation with (phospho-PP2A alpha+beta(Tyr307)) Polyclonal Antibody, Unconjugated (SL6419R) at 1:500 overnight at 4°C, followed by a conjugated secondary (sp-0023) for 20 minutes and DAB staining.



Paraformaldehyde-fixed, paraffin embedded (Rat kidney); Antigen retrieval by boiling in sodium citrate buffer (pH6.0) for 15min; Block endogenous peroxidase by 3% hydrogen peroxide for 20 minutes; Blocking buffer (normal goat serum) at 37°C for 30min; Antibody incubation with (phospho-PP2A alpha+beta(Tyr307)) Polyclonal Antibody, Unconjugated (SL6419R) at 1:500 overnight at 4°C, followed by a conjugated secondary (sp-0023) for 20 minutes and DAB staining.