



## Rabbit Anti-ZnT-1 antibody

SL6440R

<b>Product Name:</b>	ZnT-1
<b>Chinese Name:</b>	锌Transporter1抗体
<b>Alias:</b>	SLC30 A1; SLC30A 1; SLC30A1; Solute carrier family 30 (zinc transporter), member 1; Solute carrier family 30 (zinc transporter), member1; Solute carrier family 30 member 1; Solute carrier family 30, member 1; Zinc transporter 1; Zinc transporter1; ZNT 1; ZnT-1; ZNT1_HUMAN; ZRC 1; ZRC1.
<b>Organism Species:</b>	Rabbit
<b>Clonality:</b>	Polyclonal
<b>React Species:</b>	Human,Mouse,Rat,Dog,Pig,Cow,Horse,
<b>Applications:</b>	WB=1:500-2000ELISA=1:500-1000IHC-P=1:400-800IHC-F=1:400-800IF=1:100-500 (Paraffin sections need antigen repair) not yet tested in other applications. optimal dilutions/concentrations should be determined by the end user.
<b>Molecular weight:</b>	55kDa
<b>Cellular localization:</b>	The cell membrane
<b>Form:</b>	Lyophilized or Liquid
<b>Concentration:</b>	1mg/ml
<b>immunogen:</b>	KLH conjugated synthetic peptide derived from human ZnT-1:131-330/507
<b>Lsotype:</b>	IgG
<b>Purification:</b>	affinity purified by Protein A
<b>Storage Buffer:</b>	0.01M TBS(pH7.4) with 1% BSA, 0.03% Proclin300 and 50% Glycerol.
<b>Storage:</b>	Store at -20 °C for one year. Avoid repeated freeze/thaw cycles. The lyophilized antibody is stable at room temperature for at least one month and for greater than a year when kept at -20°C. When reconstituted in sterile pH 7.4 0.01M PBS or diluent of antibody the antibody is stable for at least two weeks at 2-4 °C.
<b>PubMed:</b>	<a href="#">PubMed</a>
<b>Product Detail:</b>	Zinc, an essential element required for cell proliferation and differentiation, plays a role in a diverse array of cellular functions, including acting as a cofactor for numerous enzymes and transcription factors and as a neuroregulator. The zinc transporter (ZnT) family regulates the supply of zinc within cells, and its members are characterized by

containing six membrane-spanning domains, a large histidine-rich intracellular loop, and a C-terminal tail. ZnT-1, a ubiquitous protein, localizes to the plasma membrane to aid in the export of zinc out of cells.

**Function:**

May be involved in zinc transport out of the cell.

**Subunit:**

Multimer.

**Subcellular Location:**

Cell membrane; Multi-pass membrane protein.

**Similarity:**

Belongs to the cation diffusion facilitator (CDF) transporter (TC 2.A.4) family. SLC30A subfamily.

**SWISS:**

Q9Y6M5

**Gene ID:**

7779

**Database links:**

[Entrez Gene: 7779](#)Human

[Entrez Gene: 22782](#)Mouse

[Entrez Gene: 58976](#)Rat

[Omim: 609521](#)Human

[SwissProt: Q9Y6M5](#)Human

[SwissProt: Q60738](#)Mouse

[SwissProt: Q62720](#)Rat

[Unigene: 519469](#)Human

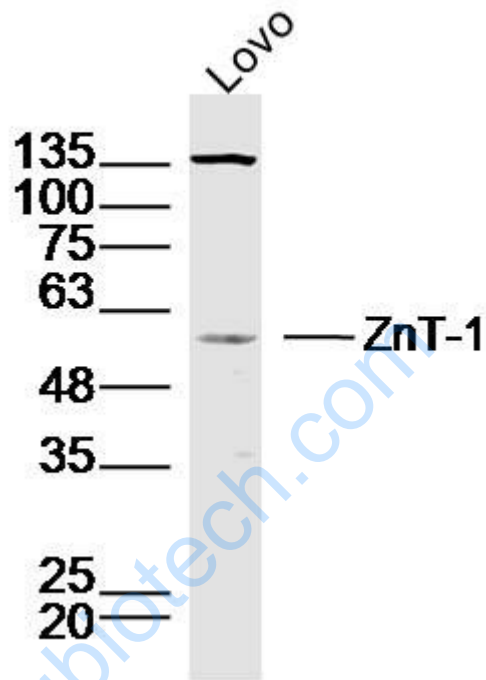
[Unigene: 9024](#)Mouse

[Unigene: 10120](#)Rat

**Important Note:**

This product as supplied is intended for research use only, not for use in human, therapeutic or diagnostic applications.

Picture:



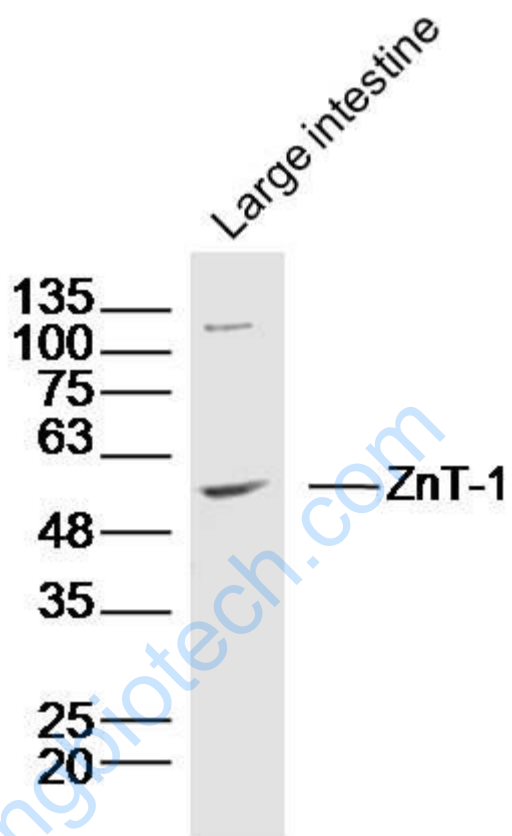
Sample:Lovo cell (human) Lysate at 40 ug

Primary: Anti- ZnT-1(SL6440R)at 1/300 dilution

Secondary: IRDye800CW Goat Anti-Rabbit IgG at 1/20000 dilution

Predicted band size: 55kD

Observed band size: 55kD



Sample: Large intestine (mouse) Lysate at 40 ug

Primary: Anti- ZnT-1(SL6440R) at 1/300 dilution

Secondary: IRDye800CW Goat Anti-Rabbit IgG at 1/20000 dilution

Predicted band size: 55kD

Observed band size: 55kD