



## Rabbit Anti-CRABP1/Retinol binding protein antibody

SL6442R

<b>Product Name:</b>	CRABP1/Retinol binding protein
<b>Chinese Name:</b>	视黄醇Binding protein抗体
<b>Alias:</b>	Cellular retinoic acid binding protein 1; Cellular retinoic acid-binding protein 1; Cellular retinoic acid-binding protein I; CRABP 1; CRABP; CRABP I; CRABP-I; Crabp1; CRABPI; RABP1_HUMAN; RBP 5; RBP5; Retinoic acid binding protein I cellular.
<b>Organism Species:</b>	Rabbit
<b>Clonality:</b>	Polyclonal
<b>React Species:</b>	Human,Mouse,Rat,Chicken,Dog,Pig,Cow,Rabbit,
<b>Applications:</b>	WB=1:500-2000ELISA=1:500-1000IHC-P=1:400-800IHC-F=1:400-800IF=1:50-200 (Paraffin sections need antigen repair) not yet tested in other applications. optimal dilutions/concentrations should be determined by the end user.
<b>Molecular weight:</b>	16kDa
<b>Cellular localization:</b>	cytoplasmic
<b>Form:</b>	Lyophilized or Liquid
<b>Concentration:</b>	1mg/ml
<b>immunogen:</b>	KLH conjugated synthetic peptide derived from human Retinol binding protein:45-135/135
<b>Lsotype:</b>	IgG
<b>Purification:</b>	affinity purified by Protein A
<b>Storage Buffer:</b>	0.01M TBS(pH7.4) with 1% BSA, 0.03% Proclin300 and 50% Glycerol.
<b>Storage:</b>	Store at -20 °C for one year. Avoid repeated freeze/thaw cycles. The lyophilized antibody is stable at room temperature for at least one month and for greater than a year when kept at -20°C. When reconstituted in sterile pH 7.4 0.01M PBS or diluent of antibody the antibody is stable for at least two weeks at 2-4 °C.
<b>PubMed:</b>	<a href="#">PubMed</a>
<b>Product Detail:</b>	RBP2 is an abundant protein present in the smallintestinal epithelium. It is thought to

participate in the uptake and/or intracellular metabolism of vitamin A. Vitamin A is a fat-soluble vitamin necessary for growth, reproduction, differentiation of epithelial tissues, and vision. RBP2 may also modulate the supply of retinoic acid to the nuclei of endometrial cells during the menstrual cycle.

**Function:**

Intracellular transport of retinol.

**Subcellular Location:**

Cytoplasm.

**Tissue Specificity:**

Detected in nearly all the tissues with higher expression in adult ovary, pancreas, pituitary gland and adrenal gland, and fetal liver.

**Similarity:**

Belongs to the calycin superfamily. Fatty-acid binding protein (FABP) family.

**SWISS:**

P09455

**Gene ID:**

1381

**Database links:**

[Entrez Gene: 1381](#) Human

[Entrez Gene: 12903](#) Mouse

[Entrez Gene: 25061](#) Rat

[Omicron: 180230](#) Human

[SwissProt: P29762](#) Human

[SwissProt: P62965](#) Mouse

[SwissProt: P62966](#) Rat

[Unigene: 346950](#) Human

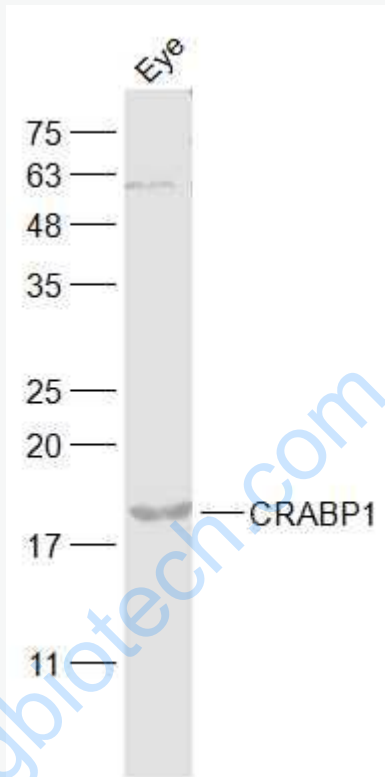
[Unigene: 34797](#) Mouse

**Important Note:**

This product as supplied is intended for research use only, not for use in human,

therapeutic or diagnostic applications.

Picture:



Sample:

Eye (Mouse) Lysate at 40 ug

Primary: Anti-CRABP1 (SL6442R) at 1/1000 dilution

Secondary: IRDye800CW Goat Anti-Rabbit IgG at 1/20000 dilution

Predicted band size: 16 kD

Observed band size: 18 kD