



Rabbit Anti-Dlx1 antibody

SL6467R

Product Name:	Dlx1
Chinese Name:	同源转录因子DLX1抗体
Alias:	DII B; Distal less homeo box 1; Distal less homeobox 1; Distal-less homeobox gene 1a; Dlx 1; Dlx; Dlx1; Dlx1 distal-less homeobox 1; DLX1_HUMAN; Homeo box protein DLX1; Homeobox protein DLX 1; Homeobox protein DLX-1; Homeobox protein Dlx1a; Homeodomain transcription factor DLX1; RP23-419H3.3.
Organism Species:	Rabbit
Clonality:	Polyclonal
React Species:	Human,Mouse,Rat,Chicken,Dog,Pig,Cow,Horse,Rabbit,
Applications:	WB=1:500-2000ELISA=1:500-1000IHC-P=1:400-800IHC-F=1:400-800Flow-Cyt=1ug/testIF=1:50-200 (Paraffin sections need antigen repair) not yet tested in other applications. optimal dilutions/concentrations should be determined by the end user.
Molecular weight:	28kDa
Cellular localization:	The nucleus
Form:	Lyophilized or Liquid
Concentration:	1mg/ml
immunogen:	KLH conjugated synthetic peptide derived from human Dlx1:101-200/255
Lsotype:	IgG
Purification:	affinity purified by Protein A
Storage Buffer:	0.01M TBS(pH7.4) with 1% BSA, 0.03% Proclin300 and 50% Glycerol.
Storage:	Store at -20 °C for one year. Avoid repeated freeze/thaw cycles. The lyophilized antibody is stable at room temperature for at least one month and for greater than a year when kept at -20°C. When reconstituted in sterile pH 7.4 0.01M PBS or diluent of antibody the antibody is stable for at least two weeks at 2-4 °C.
PubMed:	PubMed
Product Detail:	Likely to play a regulatory role in the development of the ventral forebrain. May play a role in craniofacial patterning and morphogenesis and may be involved in the early development of diencephalic subdivisions.

Function:

Likely to play a regulatory role in the development of the ventral forebrain. May play a role in craniofacial patterning and morphogenesis and may be involved in the early development of diencephalic subdivisions (By similarity).

Subcellular Location:

Nucleus.

Similarity:

Belongs to the distal-less homeobox family.
Contains 1 homeobox DNA-binding domain.

SWISS:

P56177

Gene ID:

1745

Database links:

[Entrez Gene: 1745](#)Human

[Entrez Gene: 13390](#)Mouse

[Entrez Gene: 296500](#)Rat

[Oimim: 600029](#)Human

[SwissProt: P56177](#)Human

[SwissProt: Q64317](#)Mouse

[SwissProt: Q64202](#)Rat

[Unigene: 407015](#)Human

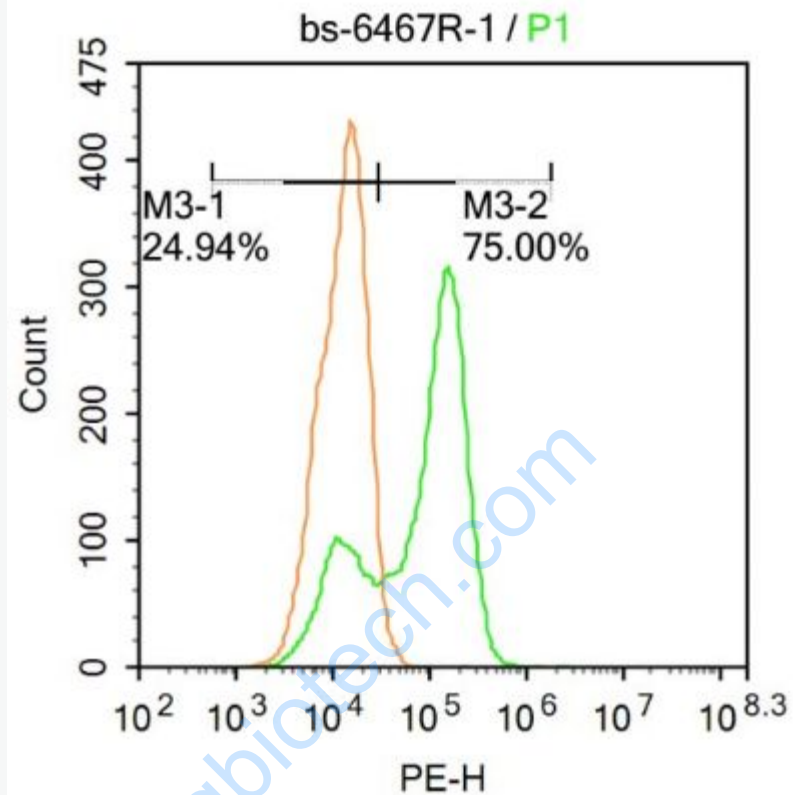
[Unigene: 4543](#)Mouse

[Unigene: 475101](#)Mouse

[Unigene: 59152](#)Rat

Important Note:

This product as supplied is intended for research use only, not for use in human, therapeutic or diagnostic applications.



Picture:

Blank control: Hela.

Primary Antibody (green line): Rabbit Anti-Dlx1 antibody (SL6467R)

Dilution: $1\mu\text{g}/10^6$ cells;

Isotype Control Antibody (orange line): Rabbit IgG .

Secondary Antibody : Goat anti-rabbit IgG-PE

Dilution: $1\mu\text{g}/\text{test}$.

Protocol

The cells were fixed with 4% PFA (10min at room temperature) and then permeabilized with 90% ice-cold methanol for 20 min at -20°C . The cells were then incubated in 5% BSA to block non-specific protein-protein interactions for 30 min at room temperature . Cells stained with Primary Antibody for 30 min at room

temperature. The secondary antibody used for 40 min at room temperature.

Acquisition of 20,000 events was performed.

www.sunlongbiotech.com