



Rabbit Anti-ITPR3 antibody

SL6471R

Product Name:	ITPR3
Chinese Name:	5-三磷酸肌醇受体3抗体
Alias:	IP3R-III; IP3 receptor isoform 3; 4 antibody 5-trisphosphate receptor; 5-trisphosphate receptor type 3; FLJ36205; Inositol 1; Inositol 1,4,5 trisphosphate receptor type 3; IP3 receptor; IP3R 3; IP3R; IP3R3; ITPR 3; ITPR3; ITPR3_HUMAN; Type 3 inositol 1; Type 3 inositol 1,4,5 trisphosphate receptor; Type 3 InsP3 receptor.
Organism Species:	Rabbit
Clonality:	Polyclonal
React Species:	Human,Mouse,Rat,Chicken,Dog,Cow,Horse,Rabbit,d
Applications:	ELISA=1:500-1000IHC-P=1:400-800IHC-F=1:400-800IF=1:50-200 (Paraffin sections need antigen repair) not yet tested in other applications. optimal dilutions/concentrations should be determined by the end user.
Molecular weight:	294kDa
Cellular localization:	cytoplasmicThe cell membrane
Form:	Lyophilized or Liquid
Concentration:	1mg/ml
immunogen:	KLH conjugated synthetic peptide derived from human ITPR3:21-120/2671
Lsotype:	IgG
Purification:	affinity purified by Protein A
Storage Buffer:	0.01M TBS(pH7.4) with 1% BSA, 0.03% Proclin300 and 50% Glycerol.
Storage:	Store at -20 °C for one year. Avoid repeated freeze/thaw cycles. The lyophilized antibody is stable at room temperature for at least one month and for greater than a year when kept at -20°C. When reconstituted in sterile pH 7.4 0.01M PBS or diluent of antibody the antibody is stable for at least two weeks at 2-4 °C.
PubMed:	PubMed
Product Detail:	Inositol 1,4,5-triphosphate (IP3) functions as a second messenger for a myriad of extracellular stimuli including hormones, growth factors and neurotransmitters. Receptor tyrosine kinases indirectly increase the intracellular levels of IP3 through the activation of phospholipases such as phospholipase C (PLC), which convert phosphatidylinositol-

4,5 bisphosphate into IP3 and diacylglycerol (DAG). The inositol 1,4,5-triphosphate receptor, IP3R, acts as an inositol triphosphate (IP3)-gated calcium release channel in a variety of cell types. Three IP3 receptor subtypes have been described and are designated IP3R-I, IP3R-II and IP3R-III. IP3R-I is the predominant IP3R subtype expressed in neuronal tissues and the central nervous system, but is also expressed at high levels in the liver.

Function:

Transcriptional repressor that binds specifically to the PRDI element in the promoter of the beta-interferon gene. Drives the maturation of B-lymphocytes into Ig secreting cells.

Subunit:

Homotetramer. Interacts with SIGMAR1, PML, AKT1, TRPC1, TRPC3 and TRPC4 (By similarity). Interacts with CABP1. Interacts with TMBIM4/LFG4.

Subcellular Location:

Endoplasmic reticulum membrane.

Tissue Specificity:

Expressed in intestinal crypt and villus epithelial cells.

Similarity:

Belongs to the InsP3 receptor family.
Contains 5 MIR domains.

SWISS:

Q14643

Gene ID:

3708

Database links:

[Entrez Gene: 317697](#) Cow

[Entrez Gene: 3708](#) Human

[Entrez Gene: 16438](#) Mouse

[Entrez Gene: 25262](#) Rat

[Omim: 147265](#) Human

[SwissProt: Q9TU34](#) Cow

[SwissProt: Q14643](#) Human

[SwissProt: P11881](#) Mouse

[SwissProt: P29994](#) Rat

[Unigene: 567295](#) Human

[Unigene: 715765](#) Human

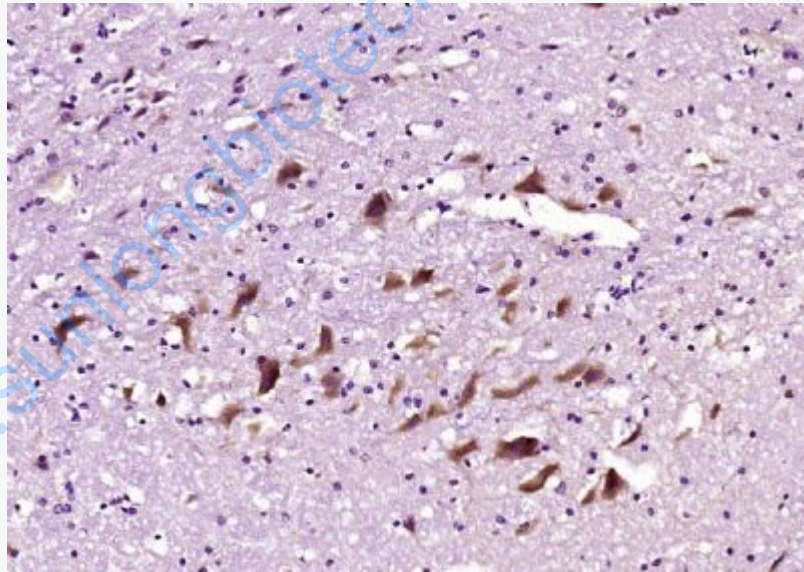
[Unigene: 227912](#) Mouse

[Unigene: 2135](#) Rat

Important Note:

This product as supplied is intended for research use only, not for use in human, therapeutic or diagnostic applications.

Picture:



Paraformaldehyde-fixed, paraffin embedded (mouse cerebellum); Antigen retrieval by boiling in sodium citrate buffer (pH6.0) for 15min; Block endogenous peroxidase by 3% hydrogen peroxide for 20 minutes; Blocking buffer (normal goat serum) at 37°C for 30min; Antibody incubation with (ITPR3) Polyclonal Antibody, Unconjugated (SL6471R) at 1:200 overnight at 4°C, followed by operating

	according to SP Kit(Rabbit) (sp-0023) instructions and DAB staining.
--	--

www.sunlongbiotech.com