



## Rabbit Anti-GABA A Receptor alpha 3 antibody

SL6500R

<b>Product Name:</b>	GABA A Receptor alpha 3
<b>Chinese Name:</b>	G氨基丁酸受体 $\alpha$ 3抗体
<b>Alias:</b>	GABA(A) receptor subunit alpha 3; GABA(A) receptor subunit alpha-3; GABR A3; GABRA 3; GABRA-3; GABRA3; Gamma aminobutyric acid (GABA) A receptor alpha 3; Gamma aminobutyric acid A receptor alpha 3; Gamma aminobutyric acid receptor subunit alpha 3; gamma-aminobutyric acid A receptor alpha 3; Gamma-aminobutyric acid receptor subunit alpha-3; GBRA3_HUMAN.
<b>Organism Species:</b>	Rabbit
<b>Clonality:</b>	Polyclonal
<b>React Species:</b>	Human,Mouse,Rat,Dog,Cow,Horse,Rabbit,Sheep,
<b>Applications:</b>	ELISA=1:500-1000IHC-P=1:400-800IHC-F=1:400-800ICC=1:100-500IF=1:50-200 (Paraffin sections need antigen repair) not yet tested in other applications. optimal dilutions/concentrations should be determined by the end user.
<b>Molecular weight:</b>	52kDa
<b>Cellular localization:</b>	The cell membrane
<b>Form:</b>	Lyophilized or Liquid
<b>Concentration:</b>	1mg/ml
<b>immunogen:</b>	KLH conjugated synthetic peptide derived from human GABRA3:101-200/492<Extracellular>
<b>Lsotype:</b>	IgG
<b>Purification:</b>	affinity purified by Protein A
<b>Storage Buffer:</b>	0.01M TBS(pH7.4) with 1% BSA, 0.03% Proclin300 and 50% Glycerol.
<b>Storage:</b>	Store at -20 °C for one year. Avoid repeated freeze/thaw cycles. The lyophilized antibody is stable at room temperature for at least one month and for greater than a year when kept at -20°C. When reconstituted in sterile pH 7.4 0.01M PBS or diluent of antibody the antibody is stable for at least two weeks at 2-4 °C.
<b>PubMed:</b>	<a href="#">PubMed</a>
<b>Product Detail:</b>	GABA, the major inhibitory neurotransmitter in the vertebrate brain, mediates neuronal inhibition by binding to the GABA/benzodiazepine receptor and opening an integral

chloride channel.

**Function:**

GABA, the major inhibitory neurotransmitter in the vertebrate brain, mediates neuronal inhibition by binding to the GABA/benzodiazepine receptor and opening an integral chloride channel.

**Subunit:**

Binds UBQLN1. Generally pentameric. There are five types of GABA(A) receptor chains: alpha, beta, gamma, delta, and rho.

**Subcellular Location:**

Cell junction; synapse; postsynaptic cell membrane; Cell membrane.

**Similarity:**

Belongs to the ligand-gated ion channel (TC 1.A.9) family. Gamma-aminobutyric acid receptor (TC 1.A.9.5) subfamily. GABRA3 sub-subfamily.

**SWISS:**

P34903

**Gene ID:**

2556

**Database links:**

[Entrez Gene: 282237](#)Cow

[Entrez Gene: 492223](#)Dog

[Entrez Gene: 2556](#)Human

[Entrez Gene: 14396](#)Mouse

[Entrez Gene: 24947](#)Rat

[Omim: 305660](#)Human

[SwissProt: P10064](#)Cow

[SwissProt: P34903](#)Human

[SwissProt: P26049](#)Mouse

[SwissProt: P20236](#)Rat

[Unigene: 123024](#)Human

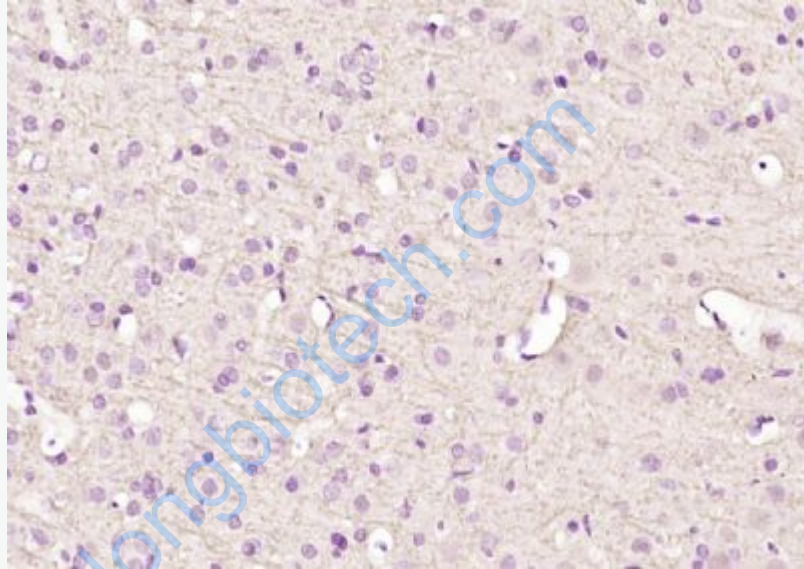
[Unigene: 102286](#)Mouse

[Unigene: 447666](#)Mouse

[Unigene: 10367](#)Rat

**Important Note:**

This product as supplied is intended for research use only, not for use in human, therapeutic or diagnostic applications.



**Picture:**

Paraformaldehyde-fixed, paraffin embedded (rat brain); Antigen retrieval by boiling in sodium citrate buffer (pH6.0) for 15min; Block endogenous peroxidase by 3% hydrogen peroxide for 20 minutes; Blocking buffer (normal goat serum) at 37°C for 30min; Antibody incubation with (GABA A Receptor alpha 3) Polyclonal Antibody, Unconjugated (SL6500R) at 1:200 overnight at 4°C, followed by operating according to SP Kit(Rabbit) (sp-0023) instructions and DAB staining.