



Rabbit Anti-Testin antibody

SL6502R

Product Name:	Testin
Chinese Name:	Tumour抑制基因Testin抗体
Alias:	Testin; TES; TESS 2; TESS; TESS2; TESS-2; Testis derived transcript (3 LIM domains); Testis derived transcript; TES HUMAN.
Organism Species:	Rabbit
Clonality:	Polyclonal
React Species:	Human,Mouse,Rat,Dog,Pig,Rabbit,Sheep,
Applications:	WB=1:500-2000ELISA=1:500-1000IHC-P=1:400-800IHC-F=1:400-800IF=1:100-500 (Paraffin sections need antigen repair) not yet tested in other applications. optimal dilutions/concentrations should be determined by the end user.
Molecular weight:	48kDa
Cellular localization:	cytoplasmicThe cell membrane
Form:	Lyophilized or Liquid
Concentration:	1mg/ml
immunogen:	KLH conjugated synthetic peptide derived from human Testin:161-210/421
Lsotype:	IgG
Purification:	affinity purified by Protein A
Storage Buffer:	0.01M TBS(pH7.4) with 1% BSA, 0.03% Proclin300 and 50% Glycerol.
Storage:	Store at -20 °C for one year. Avoid repeated freeze/thaw cycles. The lyophilized antibody is stable at room temperature for at least one month and for greater than a year when kept at -20°C. When reconstituted in sterile pH 7.4 0.01M PBS or diluent of antibody the antibody is stable for at least two weeks at 2-4 °C.
PubMed:	PubMed
Product Detail:	Cancer-associated chromosomal changes often involveregions containing fragile sites. This gene maps to a commomfragile site on chromosome 7q31.2 designated FRA7G. This gene issimilar to mouse Testin, a testosterone-responsive gene encoding aSertoli cell secretory protein containing three LIM domains. LIMdomains are double zinc-finger motifs that mediate protein-proteininteractions between transcription factors, cytoskeletal proteinsand signaling proteins. This protein is a negative regulator ofcell

growth and may act as a tumor suppressor. This scaffold protein may also play a role in cell adhesion, cell spreading and in the reorganization of the actin cytoskeleton. Multiple protein isoforms are encoded by transcript variants of this gene.

Function:

Scaffold protein that may play a role in cell adhesion, cell spreading and in the reorganization of the actin cytoskeleton. Plays a role in the regulation of cell proliferation. May act as a tumor suppressor. Inhibits tumor cell growth.

Subunit:

Interacts via LIM domain 1 with ZYX. Interacts (via LIM domain 3) with ENAH and VASP. Interacts with talin, actin, alpha-actinin, GRIP1 and PXN. Interacts (via LIM domain 2) with ACTL7A (via N-terminus). Heterodimer with ACTL7A; the heterodimer interacts with ENAH to form a heterotrimer.

Subcellular Location:

Cytoplasm. Cell junction, focal adhesion. Note=Detected along actin stress fibers.

Tissue Specificity:

Ubiquitous.

Similarity:

Belongs to the prickle / espinas / testin family.
Contains 3 LIM zinc-binding domains.
Contains 1 PET domain.

SWISS:

Q9UGI8

Gene ID:

26136

Database links:

[Entrez Gene: 534965](#)Cow

[Entrez Gene: 26136](#)Human

[Entrez Gene: 21753](#)Mouse

[Entrez Gene: 500040](#)Rat

[Omim: 606085](#)Human

[SwissProt: Q2YDE9](#)Cow

[SwissProt: Q2QLB2](#)Horse

[SwissProt: Q9UGI8](#)Human

[SwissProt: P47226](#)Mouse

[SwissProt: Q2QLE3](#)Pig

[SwissProt: Q2LAP6](#)Rat

[Unigene: 592286](#)Human

[Unigene: 664957](#)Human

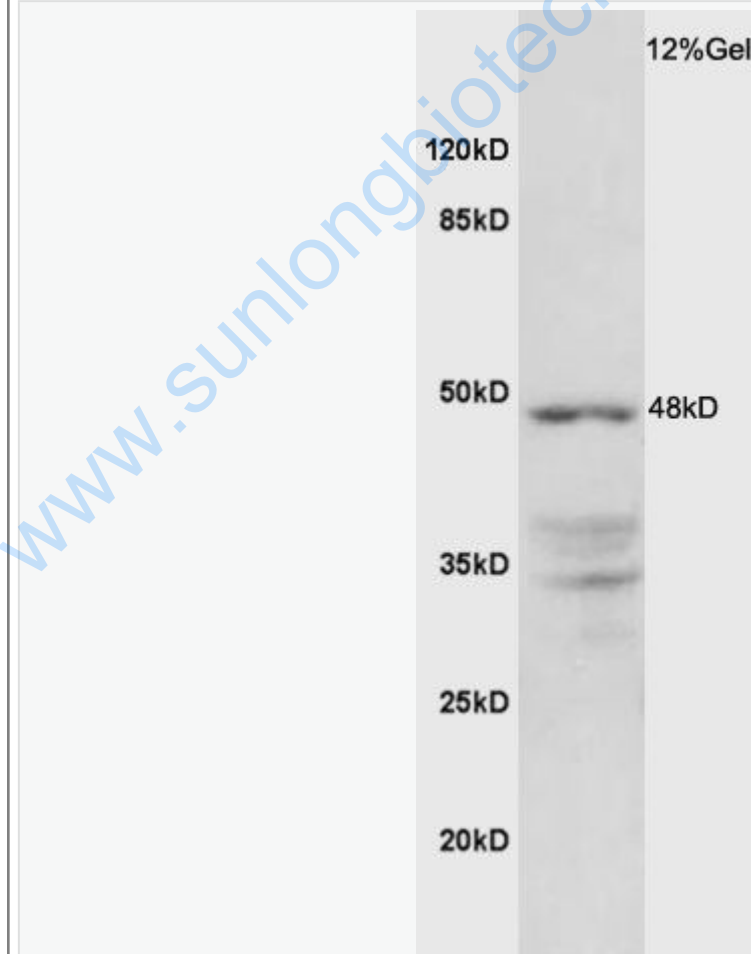
[Unigene: 436548](#)Mouse

[Unigene: 44847](#)Rat

Important Note:

This product as supplied is intended for research use only, not for use in human, therapeutic or diagnostic applications.

Picture:



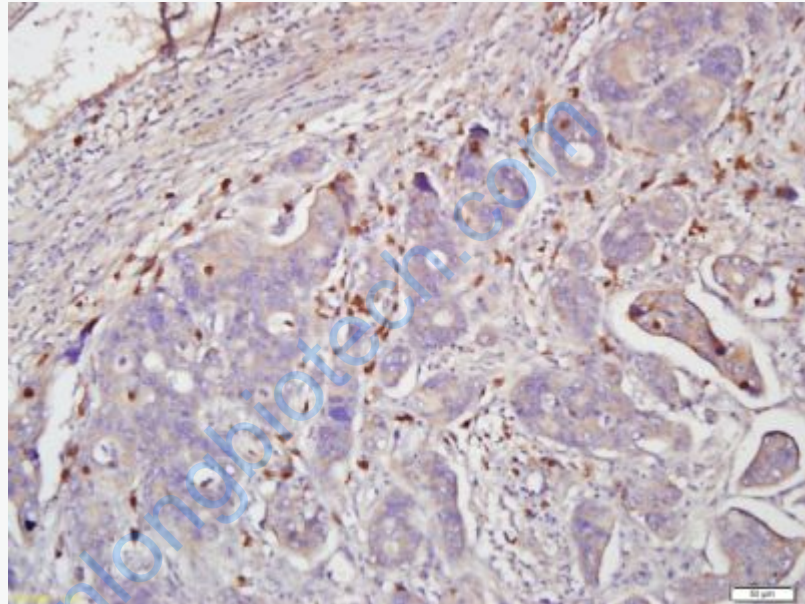
Sample: Lung (Mouse) Lysate at 40 ug

Primary: Anti-Testin (SL6502R) at 1/300 dilution

Secondary: HRP conjugated Goat-Anti-rabbit IgG (SL6502R) at 1/5000 dilution

Predicted band size: 48 kD

Observed band size: 48 kD



Tissue/cell: human cervical carcinoma; 4% Paraformaldehyde-fixed and paraffin-embedded;

Antigen retrieval: citrate buffer (0.01M, pH 6.0), Boiling bathing for 15min; Block endogenous peroxidase by 3% Hydrogen peroxide for 30min; Blocking buffer (normal goat serum,C-0005) at 37°C for 20 min;

Incubation: Anti-Testin Polyclonal Antibody, Unconjugated(SL6502R) 1:500, overnight at 4°C, followed by conjugation to the secondary antibody(SP-0023) and DAB(C-0010) staining