



## Rabbit Anti-ABI3BP antibody

SL6506R

<b>Product Name:</b>	ABI3BP
<b>Chinese Name:</b>	ABI基因家族成员3Binding protein抗体
<b>Alias:</b>	ABI gene family member 3 (NESH) binding protein; ABI gene family member 3 binding protein; ABI3BP; Nesh binding protein; Nesh BP; NESHBP; Target of Nesh SH3; TARSH; TARSH HUMAN.
<b>Organism Species:</b>	Rabbit
<b>Clonality:</b>	Polyclonal
<b>React Species:</b>	Human,Mouse,Rat,Dog,Pig,Cow,Horse,Rabbit,
<b>Applications:</b>	WB=1:500-2000ELISA=1:500-1000IHC-P=1:400-800IHC-F=1:400-800IF=1:100-500 (Paraffin sections need antigen repair) not yet tested in other applications. optimal dilutions/concentrations should be determined by the end user.
<b>Molecular weight:</b>	116kDa
<b>Cellular localization:</b>	Secretory protein
<b>Form:</b>	Lyophilized or Liquid
<b>Concentration:</b>	1mg/ml
<b>immunogen:</b>	KLH conjugated synthetic peptide derived from human ABI3BP:931-1075/1075
<b>Lsotype:</b>	IgG
<b>Purification:</b>	affinity purified by Protein A
<b>Storage Buffer:</b>	0.01M TBS(pH7.4) with 1% BSA, 0.03% Proclin300 and 50% Glycerol.
<b>Storage:</b>	Store at -20 °C for one year. Avoid repeated freeze/thaw cycles. The lyophilized antibody is stable at room temperature for at least one month and for greater than a year when kept at -20°C. When reconstituted in sterile pH 7.4 0.01M PBS or diluent of antibody the antibody is stable for at least two weeks at 2-4 °C.
<b>PubMed:</b>	<a href="#">PubMed</a>
<b>Product Detail:</b>	ABI3BP (ABI gene family member 3-binding protein) contains 2 fibronectin type-III domains and is thought to interact with ABI3. It is expressed in brain, heart, lung, liver, pancreas, kidney and placenta. ABI3BP expression is dramatically reduced in human lung cancer cell lines and primary lung tumor, while it is predominantly expressed in normal conditions, suggesting that it is involved in prevention of tumorigenesis.

**Subunit:**

Probably interacts with ABI3.

**Subcellular Location:**

Secreted.

**Tissue Specificity:**

Expressed in brain, heart, lung, liver, pancreas kidney and placenta.

**Similarity:**

Contains 2 fibronectin type-III domains.

**SWISS:**

Q7Z7G0

**Gene ID:**

25890

**Database links:**

[Entrez Gene: 25890](#)Human

[Olim: 606279](#)Human

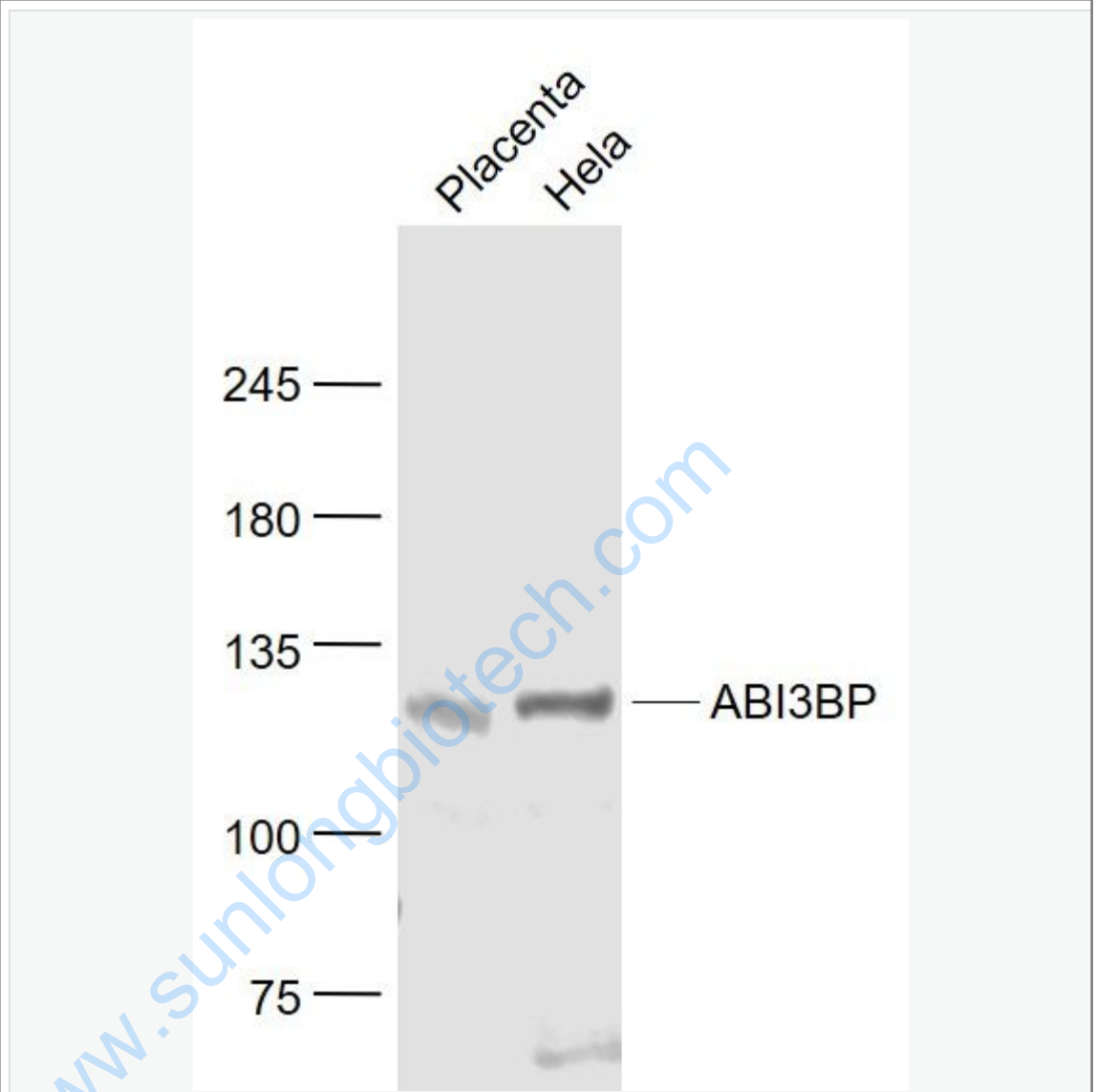
[SwissProt: Q7Z7G0](#)Human

[Unigene: 477015](#)Human

**Important Note:**

This product as supplied is intended for research use only, not for use in human, therapeutic or diagnostic applications.

Picture:



Sample:

Placenta (Mouse) Lysate at 40 ug

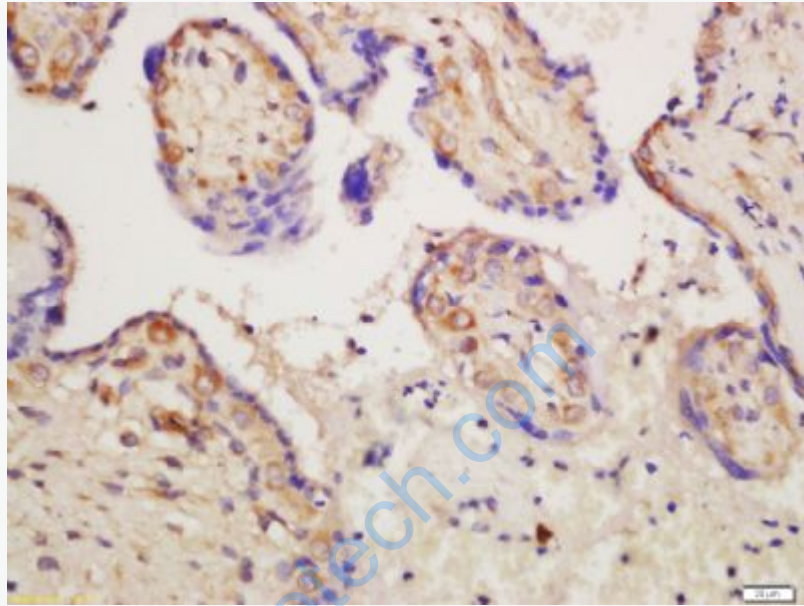
HeLa(Human) Cell Lysate at 30 ug

Primary: Anti- ABI3BP (SL6506R) at 1/1000 dilution

Secondary: IRDye800CW Goat Anti-Rabbit IgG at 1/20000 dilution

Predicted band size: 116 kD

Observed band size: 116 kD



Tissue/cell: human placenta tissue; 4% Paraformaldehyde-fixed and paraffin-embedded;

Antigen retrieval: citrate buffer ( 0.01M, pH 6.0 ), Boiling bathing for 15min; Block endogenous peroxidase by 3% Hydrogen peroxide for 30min; Blocking buffer (normal goat serum,C-0005) at 37°C for 20 min;

Incubation: Anti-ABI3BP Polyclonal Antibody, Unconjugated(SL6506R) 1:200, overnight at 4°C, followed by conjugation to the secondary antibody(SP-0023) and DAB(C-0010) staining