



Rabbit Anti-RLLM1 antibody

SL6514R

Product Name:	RLLM1
Chinese Name:	胰腺癌转移相关蛋白RLLM1抗体
Alias:	CGI 99; CGI99; CLE; Homeobox prox 1; RLLM1; Chromosome 14 open reading frame 166; CLE7; LCRP369; RLL motif containing 1; CN166_HUMAN.
Organism Species:	Rabbit
Clonality:	Polyclonal
React Species:	Human,Mouse,Rat,Chicken,Dog,Pig,Cow,Rabbit,Sheep,
Applications:	ELISA=1:500-1000IHC-P=1:400-800IHC-F=1:400-800IF=1:100-500 (Paraffin sections need antigen repair) not yet tested in other applications. optimal dilutions/concentrations should be determined by the end user.
Molecular weight:	28kDa
Cellular localization:	The nucleuscytoplasmic
Form:	Lyophilized or Liquid
Concentration:	1mg/ml
immunogen:	KLH conjugated synthetic peptide derived from human RLLM1/C14orf166:151-244/244
Lsotype:	IgG
Purification:	affinity purified by Protein A
Storage Buffer:	0.01M TBS(pH7.4) with 1% BSA, 0.03% Proclin300 and 50% Glycerol.
Storage:	Store at -20 癆 for one year. Avoid repeated freeze/thaw cycles. The lyophilized antibody is stable at room temperature for at least one month and for greater than a year when kept at -20癆. When reconstituted in sterile pH 7.4 0.01M PBS or diluent of antibody the antibody is stable for at least two weeks at 2-4 癆.
PubMed:	PubMed
Product Detail:	CGI-99 is a 244 amino acid protein that localizes to the nucleus, as well as to the cytoplasm, and belongs to the UPF0568 family. Expressed in a variety of tissues with particularly high levels in heart and skeletal muscle, CGI-99 functions as a homodimer that interacts with Ninein and is thought to regulate Ninein function. CGI-99 is

overexpressed in brain tumor tissue, suggesting a role in tumor development and metastasis. The gene encoding CGI-99 maps to human chromosome 14, which houses over 700 genes and comprises nearly 3.5% of the human genome. Chromosome 14 encodes the presenilin 1 (PSEN1) gene, which is one of the three key genes associated with the development of Alzheimer's disease (AD). The SERPINA1 gene is also located on chromosome 14 and, when defective, leads to the genetic disorder α -antitrypsin deficiency, which is characterized by severe lung complications and liver dysfunction.

Function:

The function of the C14orf266 gene has not yet been determined, but it is widely expressed, at high levels in heart and skeletal muscle and at intermediate levels in liver, pancreas, foetal brain and foetal lung. It is weakly expressed in adult brain, adult lung, placenta, foetal liver and foetal kidney, and overexpressed in many brain tumors. Cellular localization; Nucleus. Cytoplasm, perinuclear region. Cytoplasm, cytoskeleton. centrosome. May localize at the centrosome during mitosis.

Subunit:

Homodimer (Probable). Interacts with NIN; which may prevent phosphorylation of NIN. Interacts with POLR2A. Component of a tRNA-splicing ligase complex. Interacts with influenza A virus RNA polymerase subunits PA, PB1 and PB2, and nucleocapsid NP. Interacts with hepatitis C virus core protein p19.

Subcellular Location:

Nucleus. Cytoplasm, perinuclear region. Cytoplasm, cytoskeleton, centrosome. Note=May localize at the centrosome during mitosis.

Tissue Specificity:

Widely expressed. Expressed at high level in heart and skeletal muscle. Expressed at intermediate level in liver, pancreas, fetal brain and fetal lung. Weakly expressed in adult brain, adult lung, placenta, fetal liver and fetal kidney. Overexpressed in many brain tumors.

Similarity:

Belongs to the UPF0568 family.

SWISS:

Q9Y224

Gene ID:

51637

Database links:

[Entrez Gene: 51637](#)Human

[Entrez Gene: 68045](#)Mouse

[Omid: 610858](#)Human

[SwissProt: Q9Y224](#)Human

[SwissProt: Q9CQE8](#)Mouse

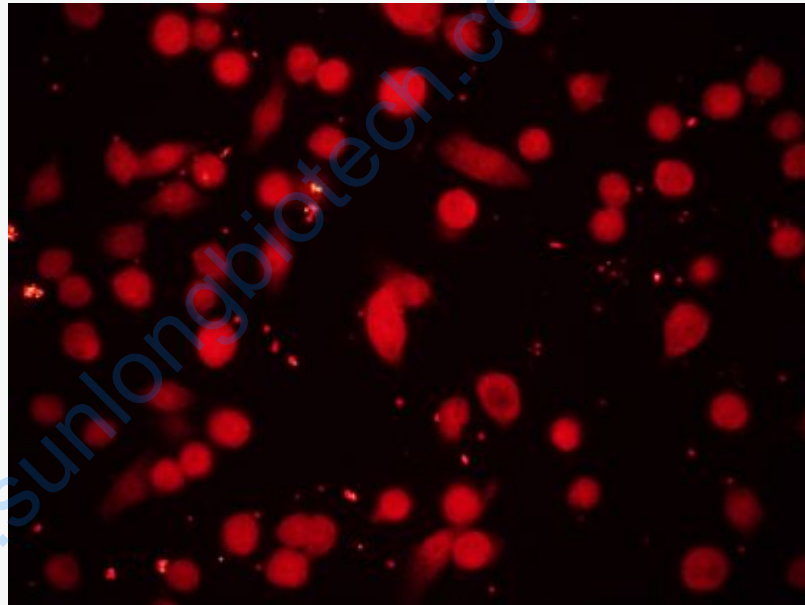
[Unigene: 534457](#)Human

[Unigene: 21932](#)Mouse

Important Note:

This product as supplied is intended for research use only, not for use in human, therapeutic or diagnostic applications.

Picture:



Tissue/cell: human pancreas carcinoma (BXPC-3);4% Paraformaldehyde-fixed;

Blocking buffer (normal goat serum,C-0005) at 37°C for 20 min;

Incubation: Anti-RLLM1 Polyclonal Antibody, Unconjugated(SL6514R) 1:200,

overnight at 4°C; The secondary antibody was Goat Anti-Rabbit IgG, Cy5

conjugated(SL6514R)used at 1:200 dilution for 40 minutes at 37°C.