



## Rabbit Anti-CKAP4 antibody

SL6520R

<b>Product Name:</b>	CKAP4
<b>Chinese Name:</b>	Cytoskeleton相关蛋白4抗体
<b>Alias:</b>	p63; 63 kDa membrane protein; CKAP 4; CLIMP 63; CLIMP63; Cytoskeleton associated protein 4; ERGIC 63; ERGIC63; MGC99554; Transmembrane protein 63kD endoplasmic reticulum Golgi intermediate compartment; Type II transmembrane protein p63; CKAP4_HUMAN.
<b>Organism Species:</b>	Rabbit
<b>Clonality:</b>	Polyclonal
<b>React Species:</b>	Human,Mouse,Rat,Chicken,Pig,Cow,
<b>Applications:</b>	WB=1:500-2000ELISA=1:500-1000IHC-P=1:400-800IHC-F=1:400-800Flow-Cyt=1ug/TestIF=1:100-500 (Paraffin sections need antigen repair) not yet tested in other applications. optimal dilutions/concentrations should be determined by the end user.
<b>Molecular weight:</b>	66kDa
<b>Cellular localization:</b>	cytoplasmicThe cell membrane
<b>Form:</b>	Lyophilized or Liquid
<b>Concentration:</b>	1mg/ml
<b>immunogen:</b>	KLH conjugated synthetic peptide derived from human CKAP4:525-602/602<Extracellular>
<b>Lsotype:</b>	IgG
<b>Purification:</b>	affinity purified by Protein A
<b>Storage Buffer:</b>	0.01M TBS(pH7.4) with 1% BSA, 0.03% Proclin300 and 50% Glycerol.
<b>Storage:</b>	Store at -20 °C for one year. Avoid repeated freeze/thaw cycles. The lyophilized antibody is stable at room temperature for at least one month and for greater than a year when kept at -20°C. When reconstituted in sterile pH 7.4 0.01M PBS or diluent of antibody the antibody is stable for at least two weeks at 2-4 °C.
<b>PubMed:</b>	<a href="#">PubMed</a>
<b>Product Detail:</b>	CKAP4 is a substrate of DHHC2, a putative tumor suppressor. CK MNF116 and CKAP4 were useful in identifying squamous cell carcinomas with single cell infiltration. These results suggest a role for CKAP4 in tumor.

**Function:**

High-affinity epithelial cell surface receptor for APF.  
Mediates the anchoring of the endoplasmic reticulum to microtubules.

**Subcellular Location:**

Endoplasmic reticulum membrane; Single-pass type II membrane protein. Cell membrane; Single-pass type II membrane protein. Cytoplasm, cytoskeleton. Cytoplasm, perinuclear region. Note=Translocates to the perinuclear region upon APF-stimulation.

**Post-translational modifications:**

Reversibly palmitoylated. Palmitoylation at Cys-100 by DHHC2 is required for its trafficking from the ER to the plasma membrane and for its perinuclear localization. Increased phosphorylation during mitosis prevents binding to microtubules.

**SWISS:**

Q07065

**Gene ID:**

10970

**Database links:**

[Entrez Gene: 10970](#)Human

[Entrez Gene: 216197](#)Mouse

[Entrez Gene: 362859](#)Rat

[SwissProt: Q07065](#)Human

[SwissProt: Q8BMK4](#)Mouse

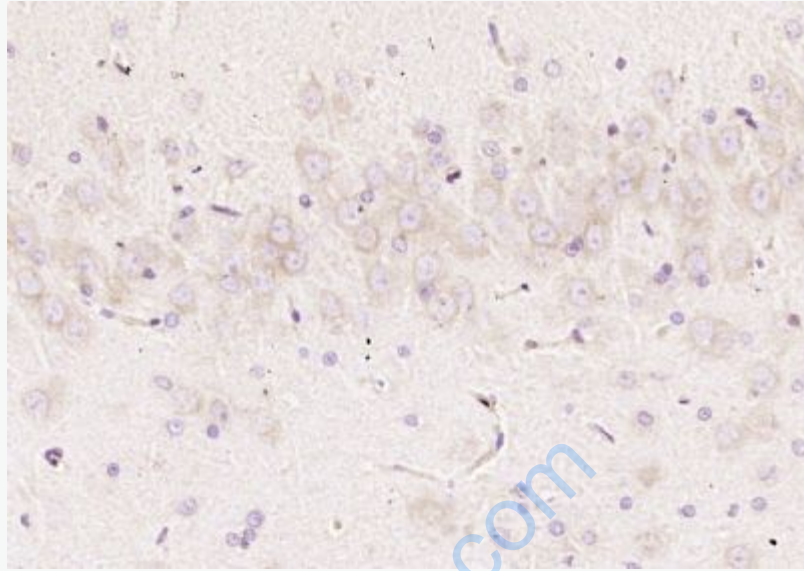
[Unigene: 74368](#)Human

[Unigene: 334999](#)Mouse

[Unigene: 99508](#)Rat

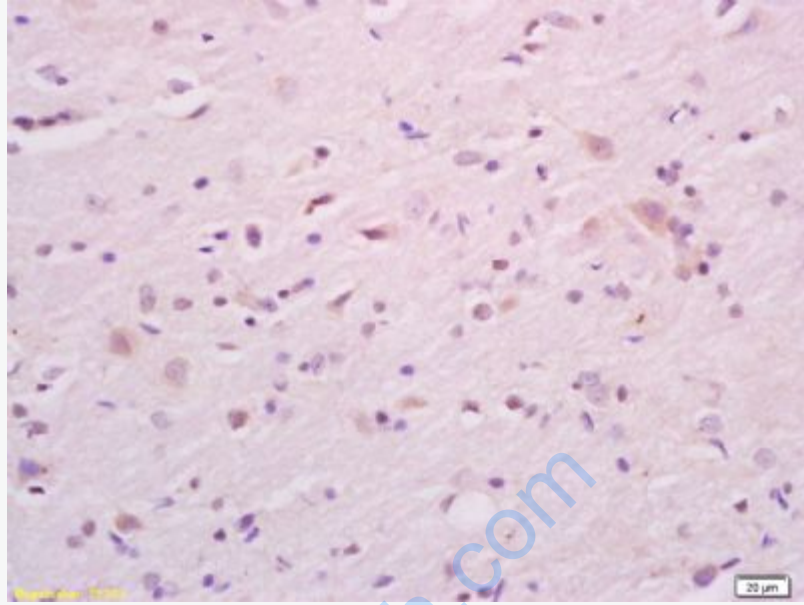
**Important Note:**

This product as supplied is intended for research use only, not for use in human, therapeutic or diagnostic applications.

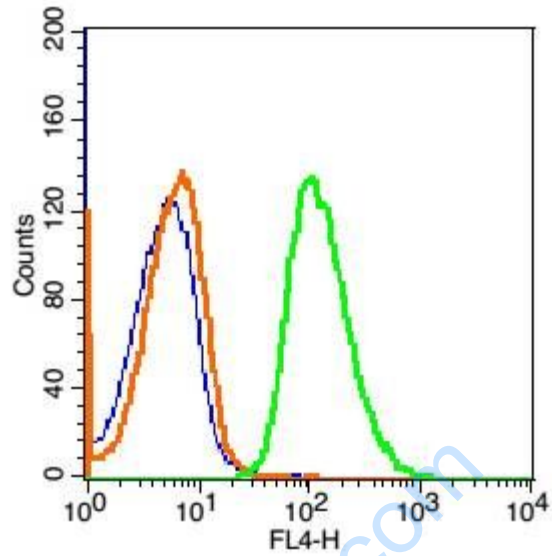


**Picture:**

Paraformaldehyde-fixed, paraffin embedded (rat brain); Antigen retrieval by boiling in sodium citrate buffer (pH6.0) for 15min; Block endogenous peroxidase by 3% hydrogen peroxide for 20 minutes; Blocking buffer (normal goat serum) at 37°C for 30min; Antibody incubation with (CKAP4) Polyclonal Antibody, Unconjugated (SL6520R) at 1:200 overnight at 4°C, followed by operating according to SP Kit(Rabbit) (sp-0023) instructions and DAB staining.



Tissue/cell: rat brain tissue; 4% Paraformaldehyde-fixed and paraffin-embedded;  
Antigen retrieval: citrate buffer ( 0.01M, pH 6.0 ), Boiling bathing for 15min; Block endogenous peroxidase by 3% Hydrogen peroxide for 30min; Blocking buffer (normal goat serum,C-0005) at 37°C for 20 min;  
Incubation: Anti-CKAP4 Polyclonal Antibody, Unconjugated(SL6520R) 1:200, overnight at 4°C, followed by conjugation to the secondary antibody(SP-0023) and DAB(C-0010) staining



Blank control(blue): Hela Cells(fixed with 2% paraformaldehyde (10 min) and then permeabilized with ice-cold 90% methanol for 30 min on ice).

Primary Antibody: Rabbit Anti- CKAP4/AF647 Conjugated antibody (SL6520R),

Dilution: 1 $\mu$ g in 100  $\mu$ L 1X PBS containing 0.5% BSA;

Isotype Control Antibody: Rabbit IgG/FITC(orange) ,used under the same conditions.