



Rabbit Anti-CRISP3 antibody

SL6521R

Product Name:	CRISP3
Chinese Name:	富含半胱氨酸分泌蛋白3抗体
Alias:	Aeg 2; Aeg2; CRIS3_HUMAN; CRISP 3; CRISP-3; Crisp3; CRS 3; CRS3; Cysteine rich secretory protein 3; Cysteine-rich secretory protein 3; SGP 28; SGP28; SGP28 protein; Specific granule protein (28 kDa); Specific granule protein of 28 kDa.
Organism Species:	Rabbit
Clonality:	Polyclonal
React Species:	Human,Mouse,Rat,Dog,Cow,Horse,Rabbit,Sheep,
Applications:	WB=1:500-2000ELISA=1:500-1000IHC-P=1:400-800IHC-F=1:400-800IF=1:100-500 (Paraffin sections need antigen repair) not yet tested in other applications. optimal dilutions/concentrations should be determined by the end user.
Molecular weight:	25kDa
Cellular localization:	cytoplasmicSecretory protein
Form:	Lyophilized or Liquid
Concentration:	1mg/ml
immunogen:	KLH conjugated synthetic peptide derived from human CRISP3:21-120/245
Lsotype:	IgG
Purification:	affinity purified by Protein A
Storage Buffer:	0.01M TBS(pH7.4) with 1% BSA, 0.03% Proclin300 and 50% Glycerol.
Storage:	Store at -20 °C for one year. Avoid repeated freeze/thaw cycles. The lyophilized antibody is stable at room temperature for at least one month and for greater than a year when kept at -20°C. When reconstituted in sterile pH 7.4 0.01M PBS or diluent of antibody the antibody is stable for at least two weeks at 2-4 °C.
PubMed:	PubMed
Product Detail:	Cysteine-rich secretory proteins (CRISPs) represent a family of evolutionarily conserved proteins which may play a role in the innate immune system and are transcriptionally regulated by androgens in several tissues. AEG is a sperm surface protein involved in the fusion of egg and sperm. Although CRISP-1 (also designated AEG-like protein, ARP, cysteine-rich secretory protein-1 or AEG-related protein) is not

the ortholog of rodent AEG, it resembles AEG in that it is an epididymal secretory glycoprotein that binds to the postacrosomal region of the sperm head. CRISP-1 coats the postacrosomal region of sperm heads as they pass through the epididymis. CRISP-1 is found in all regions of the epididymis, ductus deferens, seminal plasma and sperm. CRISP-3 is expressed in pancreas and prostate tissues and, along with CRISP-1, is expressed in saliva. The gene that encodes CRISP-3 is an early response gene that may participate in the pathophysiology of the autoimmune lesions of Sjogren's syndrome.

Subunit:

Interacts with A1BG.

Subcellular Location:

Secreted. In neutrophils, localized in specific granules.

Tissue Specificity:

Salivary gland, pancreas and prostate epididymis, ovary, thymus and colon.

Similarity:

Belongs to the CRISP family.

SWISS:

P54108

Gene ID:

10321

Database links:

[Entrez Gene: 10321](#) Human

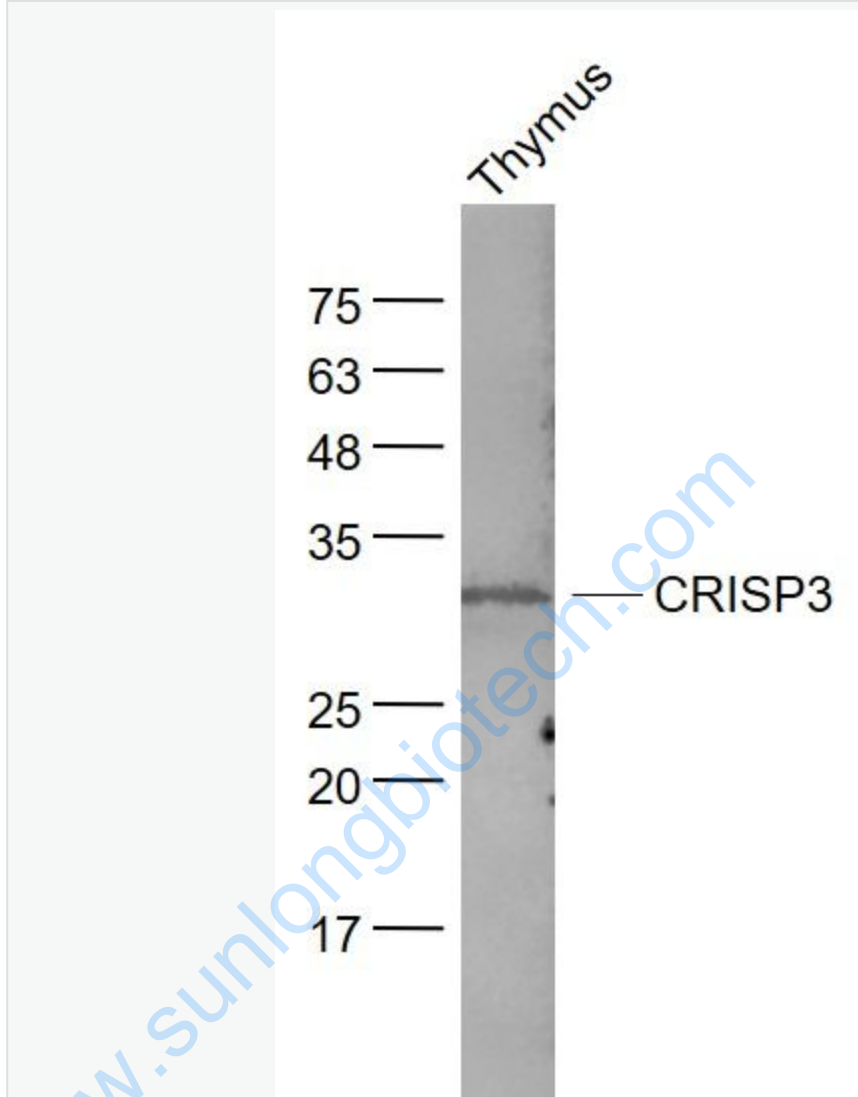
[SwissProt: P54108](#) Human

[Unigene: 404466](#) Human

Important Note:

This product as supplied is intended for research use only, not for use in human, therapeutic or diagnostic applications.

Picture:



Sample:

Thymus (Mouse) Lysate at 40 ug

Primary: Anti- CRISP3 (SL6521R) at 1/1000 dilution

Secondary: IRDye800CW Goat Anti-Rabbit IgG at 1/20000 dilution

Predicted band size: 25 kD

Observed band size: 29kD