



Rabbit Anti-EZH1 antibody

SL6528R

Product Name:	EZH1
Chinese Name:	组蛋白赖氨酸N-甲基EZH1抗体
Alias:	Enhancer of zeste homolog 1(Drosophila); Enhancer of zeste homolog 1; ENX-2; ENX2; EZH1; EZH1: enhancer of zeste homolog 1 (Drosophila); EZH1_HUMAN; Histone-lysine N-methyltransferase EZH1; KIAA0388.
Organism Species:	Rabbit
Clonality:	Polyclonal
React Species:	Human,Mouse,Rat,Chicken,Dog,Pig,Cow,Rabbit,Guinea Pig,
Applications:	WB=1:500-2000ELISA=1:500-1000IHC-P=1:400-800IHC-F=1:400-800IF=1:100-500 (Paraffin sections need antigen repair) not yet tested in other applications. optimal dilutions/concentrations should be determined by the end user.
Molecular weight:	85kDa
Cellular localization:	The nucleus
Form:	Lyophilized or Liquid
Concentration:	1mg/ml
immunogen:	KLH conjugated synthetic peptide derived from human EZH1:471-510/747
Lsotype:	IgG
Purification:	affinity purified by Protein A
Storage Buffer:	0.01M TBS(pH7.4) with 1% BSA, 0.03% Proclin300 and 50% Glycerol.
Storage:	Store at -20 °C for one year. Avoid repeated freeze/thaw cycles. The lyophilized antibody is stable at room temperature for at least one month and for greater than a year when kept at -20°C. When reconstituted in sterile pH 7.4 0.01M PBS or diluent of antibody the antibody is stable for at least two weeks at 2-4 °C.
PubMed:	PubMed
Product Detail:	Polycomb group (PcG) protein. Catalytic subunit of the PRC2/EED-EZH1 complex, which methylates 'Lys-27' of histone H3, leading to transcriptional repression of the affected target gene. Able to mono-, di- and trimethylate 'Lys-27' of histone H3 to form H3K27me1, H3K27me2 and H3K27me3, respectively. Required for embryonic stem cell derivation and self-renewal, suggesting that it is involved in safeguarding embryonic

stem cell identity. Compared to EZH1-containing complexes, it is less abundant in embryonic stem cells, has weak methyltransferase activity and plays a less critical role in forming H3K27me3, which is required for embryonic stem cell identity and proper differentiation.

Sequence similarities

Belongs to the histone-lysine methyltransferase family. EZ subfamily. Contains 1 SET domain.

Function:

Polycomb group (PcG) protein. Catalytic subunit of the PRC2/EED-EZH1 complex, which methylates 'Lys-27' of histone H3, leading to transcriptional repression of the affected target gene. Able to mono-, di- and trimethylate 'Lys-27' of histone H3 to form H3K27me1, H3K27me2 and H3K27me3, respectively. Required for embryonic stem cell derivation and self-renewal, suggesting that it is involved in safeguarding embryonic stem cell identity. Compared to EZH1-containing complexes, it is less abundant in embryonic stem cells, has weak methyltransferase activity and plays a less critical role in forming H3K27me3, which is required for embryonic stem cell identity and proper differentiation.

Subunit:

Component of the PRC2/EED-EZH1 complex, which includes EED, EZH1, SUZ12, RBBP4 and AEBP2. The PRC2/EED-EZH1 is less abundant than the PRC2/EED-EZH2 complex, has weak methyltransferase activity and compacts chromatin in the absence of the methyltransferase cofactor S-adenosyl-L-methionine (SAM).

Subcellular Location:

Nucleus. Note=Colocalizes with trimethylated 'Lys-27' of histone H3.

Similarity:

Belongs to the histone-lysine methyltransferase family. EZ subfamily. Contains 1 CXC domain. Contains 1 SET domain.

SWISS:

Q92800

Gene ID:

2145

Database links:

[Entrez Gene: 2145](#)Human

[Entrez Gene: 14055](#)Mouse

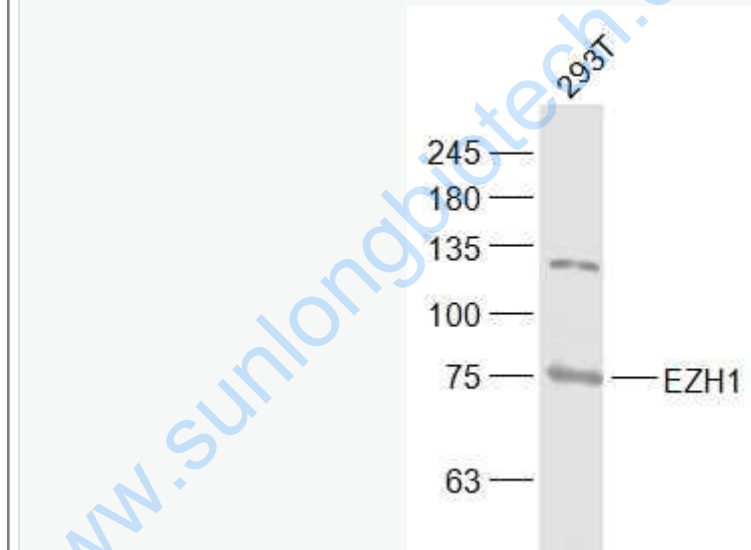
[Entrez Gene: 303547](#)Rat

[Omim: 601674](#)Human
[SwissProt: Q92800](#)Human
[SwissProt: P70351](#)Mouse
[Unigene: 194669](#)Human
[Unigene: 5027](#)Mouse
[Unigene: 154549](#)Rat

Important Note:

This product as supplied is intended for research use only, not for use in human, therapeutic or diagnostic applications.

Picture:



Sample:

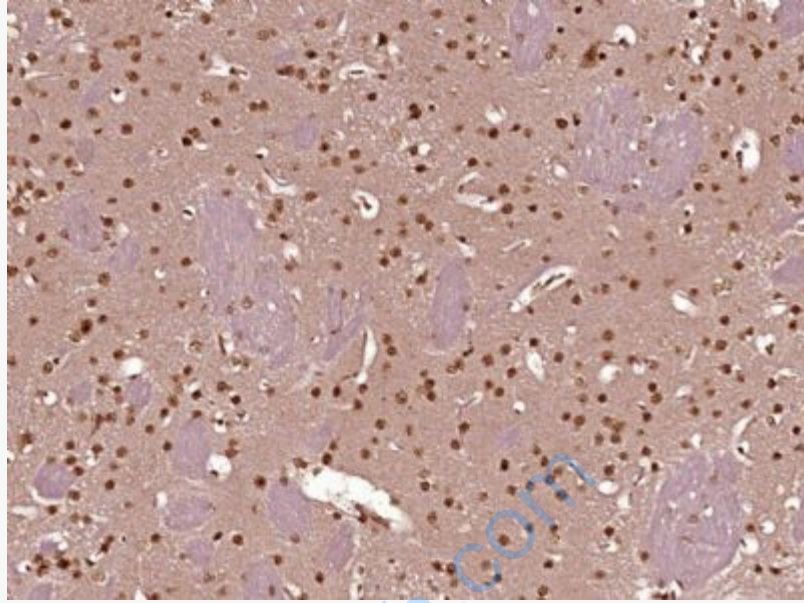
293T(Human) Cell Lysate at 30 ug

Primary: Anti-EZH1 (SL6528R) at 1/1000 dilution

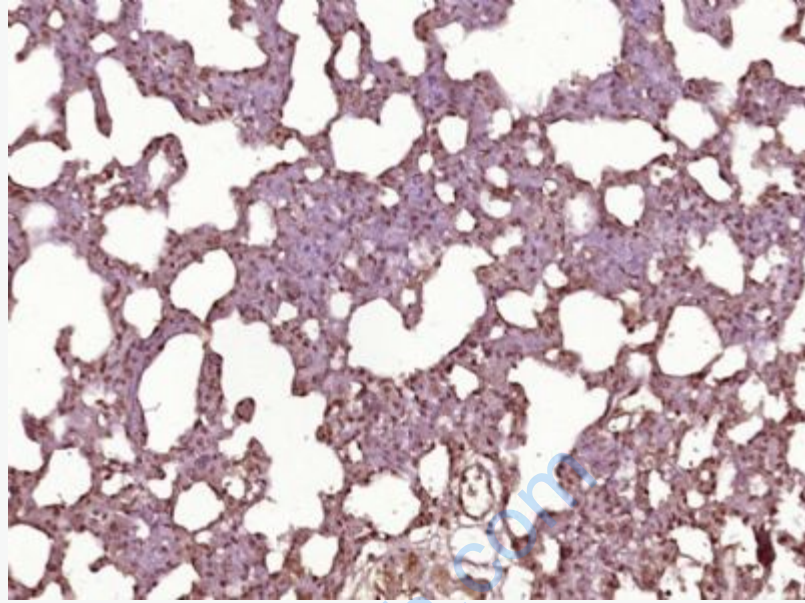
Secondary: IRDye800CW Goat Anti-Rabbit IgG at 1/20000 dilution

Predicted band size: 85 kD

Observed band size: 76 kD



Paraformaldehyde-fixed, paraffin embedded (Mouse brain); Antigen retrieval by boiling in sodium citrate buffer (pH6.0) for 15min; Block endogenous peroxidase by 3% hydrogen peroxide for 20 minutes; Blocking buffer (normal goat serum) at 37°C for 30min; Antibody incubation with (EZH1) Polyclonal Antibody, Unconjugated (SL6528R) at 1:400 overnight at 4°C, followed by operating according to SP Kit(Rabbit) (sp-0023) instructions and DAB staining.



Paraformaldehyde-fixed, paraffin embedded (Rat lung); Antigen retrieval by boiling in sodium citrate buffer (pH6.0) for 15min; Block endogenous peroxidase by 3% hydrogen peroxide for 20 minutes; Blocking buffer (normal goat serum) at 37°C for 30min; Antibody incubation with (EZH1) Polyclonal Antibody, Unconjugated (SL6528R) at 1:400 overnight at 4°C, followed by operating according to SP Kit(Rabbit) (sp-0023) instructions and DAB staining.