



Rabbit Anti-GCET2 antibody

SL6536R

Product Name:	GCET2
Chinese Name:	生发中心Blymphocyte相关蛋白2抗体
Alias:	M17; GCAT2; Gcet; GCET2 germinal center expressed transcript 2; GCET2 germinal centre expressed transcript 2; Germinal center associated lymphoma; Germinal center associated lymphoma protein; Germinal center B cell associated protein 2; Germinal center expressed transcript 2; Germinal centre associated lymphoma; Germinal centre associated lymphoma protein; Germinal centre B cell associated protein 2; Germinal centre expressed transcript 2; HGAL; M17 L.
Organism Species:	Rabbit
Clonality:	Polyclonal
React Species:	Human,Mouse,
Applications:	WB=1:500-2000ELISA=1:500-1000IHC-P=1:400-800IHC-F=1:400-800IF=1:100-500 (Paraffin sections need antigen repair) not yet tested in other applications. optimal dilutions/concentrations should be determined by the end user.
Molecular weight:	20kDa
Cellular localization:	cytoplasmicThe cell membrane
Form:	Lyophilized or Liquid
Concentration:	1mg/ml
immunogen:	KLH conjugated synthetic peptide derived from human GCET2:31-130/178
Lsotype:	IgG
Purification:	affinity purified by Protein A
Storage Buffer:	0.01M TBS(pH7.4) with 1% BSA, 0.03% Proclin300 and 50% Glycerol.
Storage:	Store at -20 °C for one year. Avoid repeated freeze/thaw cycles. The lyophilized antibody is stable at room temperature for at least one month and for greater than a year when kept at -20°C. When reconstituted in sterile pH 7.4 0.01M PBS or diluent of antibody the antibody is stable for at least two weeks at 2-4 °C.
PubMed:	PubMed
Product Detail:	This gene encodes a protein which may function in signal transduction pathways and whose expression is elevated in germinal cell lymphomas. It contains a putative PDZ-

interacting domain, an immunoreceptor tyrosine-based activation motif (ITAM), and two putative SH2 binding sites. In B cells, its expression is specifically induced by interleukin-4. Alternative splicing results in multiple transcript variants encoding different isoforms. [provided by RefSeq, Jul 2008].

Function:

Involved in the negative regulation of lymphocyte motility. It mediates the migration-inhibitory effects of IL6. Serves as a positive regulator of the RhoA signaling pathway. Enhancement of RhoA activation results in inhibition of lymphocyte and lymphoma cell motility by activation of its downstream effector ROCK.

Subunit:

Interacts with ACTB and MYH2; the interaction with MYH2 is increased by IL6-induced phosphorylation. Interacts (via C-terminus) with ARHGEF11 (via DH domain). Interacts with ARHGEF12.

Subcellular Location:

Cytoplasm. Cell membrane. Note=It relocalizes from the cytoplasm to podosome-like structures upon cell treatment with IL6.

Tissue Specificity:

Expressed in diffuse large B-cell lymphoma (DLBCL) and several germinal center (GC)-like lymphoma cell lines (at protein level). Highly expressed in normal GC lymphocytes and GC-derived malignancies. Expressed in thymus and spleen.

Post-translational modifications:

Phosphorylation on tyrosine residues can be induced by IL6. Phosphorylation is mediated by LYN.

SWISS:

Q8N6F7

Gene ID:

257144

Database links:

[Entrez Gene: 257144](#)Human

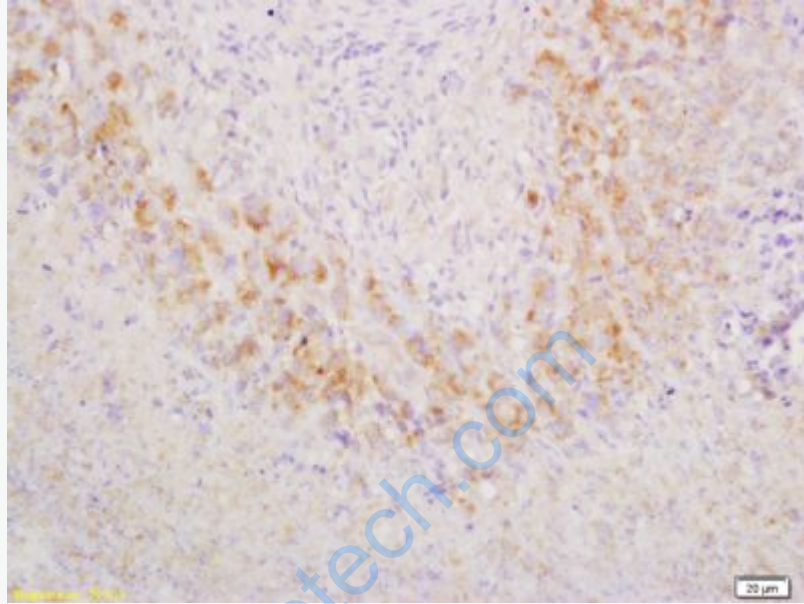
[Omim: 607792](#)Human

[SwissProt: Q8N6F7](#)Human

[Unigene: 49614](#)Human

Important Note:

This product as supplied is intended for research use only, not for use in human, therapeutic or diagnostic applications.



Picture:

Tissue/cell: mouse lymphoma tissue; 4% Paraformaldehyde-fixed and paraffin-embedded;

Antigen retrieval: citrate buffer (0.01M, pH 6.0), Boiling bathing for 15min; Block endogenous peroxidase by 3% Hydrogen peroxide for 30min; Blocking buffer (normal goat serum,C-0005) at 37°C for 20 min;

Incubation: Anti-GCET2 Polyclonal Antibody, Unconjugated(SL6536R) 1:200, overnight at 4°C, followed by conjugation to the secondary antibody(SP-0023) and DAB(C-0010) staining