



Rabbit Anti-PAGE1 antibody

SL6561R

| | |
|-------------------------------|--|
| Product Name: | PAGE1 |
| Chinese Name: | 前列腺相关P抗原家族成员1抗体 |
| Alias: | AL5; G antigen family B member 1; GAGE 9; GAGE9; GAGEB1; P antigen family, member 1 (prostate associated); PAGE 1; GAGB1_HUMAN. |
| Organism Species: | Rabbit |
| Clonality: | Polyclonal |
| React Species: | Human, |
| Applications: | WB=1:500-2000ELISA=1:500-1000IHC-P=1:400-800IHC-F=1:400-800IF=1:100-500 (Paraffin sections need antigen repair) not yet tested in other applications. optimal dilutions/concentrations should be determined by the end user. |
| Molecular weight: | 16kDa |
| Cellular localization: | The nucleuscytoplasmic |
| Form: | Lyophilized or Liquid |
| Concentration: | 1mg/ml |
| immunogen: | KLH conjugated synthetic peptide derived from human PAGE1:51-146/146 |
| Lsotype: | IgG |
| Purification: | affinity purified by Protein A |
| Storage Buffer: | 0.01M TBS(pH7.4) with 1% BSA, 0.03% Proclin300 and 50% Glycerol. |
| Storage: | Store at -20 °C for one year. Avoid repeated freeze/thaw cycles. The lyophilized antibody is stable at room temperature for at least one month and for greater than a year when kept at -20°C. When reconstituted in sterile pH 7.4 0.01M PBS or diluent of antibody the antibody is stable for at least two weeks at 2-4 °C. |
| PubMed: | PubMed |
| Product Detail: | This gene belongs to a family of genes that are expressed in a variety of tumors but not in normal tissues, except for the testis. The sequences of the family members are highly related but differ by scattered nucleotide substitutions. The antigenic peptide YRPRPRRY, which is also encoded by several other family members, is recognized by autologous cytolytic T lymphocytes. Nothing is presently known about the function of this protein. Alternative splicing results in multiple transcript variants. |

Tissue Specificity:

Isolated from prostate cancer cell lines; expression associated with progression to androgen insensitive phenotype. Expressed in normal testis and at lower level in normal placenta.

Similarity:

Belongs to the GAGE family.

SWISS:

O75459

Gene ID:

8712

Database links:

[Entrez Gene: 8712](#)Human

[Omim: 300288](#)Human

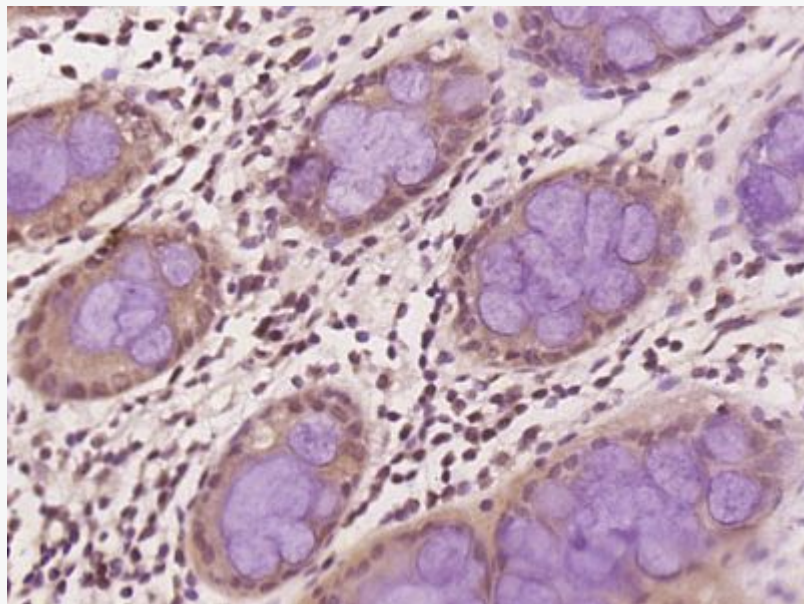
[SwissProt: O75459](#)Human

[Unigene: 128231](#)Human

Important Note:

This product as supplied is intended for research use only, not for use in human, therapeutic or diagnostic applications.

Picture:



Paraformaldehyde-fixed, paraffin embedded (human cervical carcinoma); Antigen retrieval by boiling in sodium citrate buffer (pH6.0) for 15min; Block endogenous peroxidase by 3% hydrogen peroxide for 20 minutes; Blocking buffer (normal goat serum) at 37°C for 30min; Antibody incubation with (PAGE1) Polyclonal Antibody, Unconjugated (SL6561R) at 1:400 overnight at 4°C, followed by operating according to SP Kit(Rabbit) (sp-0023) instructions and DAB staining.

www.sunlongbiotech.com