



Rabbit Anti-GAT1/GABA Transporter 1 antibody

SL6617R

Product Name:	GAT1/GABA Transporter 1
Chinese Name:	γ 氨基丁酸运载蛋白1抗体
Alias:	GABATHG; GABATR; GABT 1; GABT1; GAT-1; SLC6A1; Sodium and chloride dependent GABA transporter 1; Solute carrier family 6 (neurotransmitter transporter GABA) member 1; Solute carrier family 6 member 1.
Organism Species:	Rabbit
Clonality:	Polyclonal
React Species:	Human,Mouse,Rat,Dog,Pig,Guinea Pig,
Applications:	ELISA=1:500-1000IHC-P=1:400-800IHC-F=1:400-800IF=1:100-500 (Paraffin sections need antigen repair) not yet tested in other applications. optimal dilutions/concentrations should be determined by the end user.
Molecular weight:	66kDa
Cellular localization:	cytoplasmicThe cell membrane
Form:	Lyophilized or Liquid
Concentration:	1mg/ml
immunogen:	KLH conjugated synthetic peptide derived from human GABA Transporter 1:151-250/599<Extracellular>
Lsotype:	IgG
Purification:	affinity purified by Protein A
Storage Buffer:	0.01M TBS(pH7.4) with 1% BSA, 0.03% Proclin300 and 50% Glycerol.
Storage:	Store at -20 °C for one year. Avoid repeated freeze/thaw cycles. The lyophilized antibody is stable at room temperature for at least one month and for greater than a year when kept at -20°C. When reconstituted in sterile pH 7.4 0.01M PBS or diluent of antibody the antibody is stable for at least two weeks at 2-4 °C.
PubMed:	PubMed
Product Detail:	GABA Transporter 1/GAT1 is a gamma-amino butyric acid (GABA) transporter. After its release from interneurons in the CNS, the major inhibitory neurotransmitter GABA is taken up by GABA transporters (GATs). The predominant neuronal GABA transporter GAT1 is localized in GABAergic axons and nerve terminals, where it is thought to

influence GABAergic synaptic transmission by removing GABA from the synaptic cleft.

Function:

Terminates the action of GABA by its high affinity sodium-dependent reuptake into presynaptic terminals.

Subunit:

Interacts with MPP5.

Subcellular Location:

Cell membrane; Multi-pass membrane protein. Membrane; Multi-pass membrane protein. Note=Localized at the plasma membrane and in a subset of intracellular vesicles. Localized at the presynaptic terminals of interneurons.

Similarity:

Belongs to the sodium:neurotransmitter symporter (SNF) (TC 2.A.22) family. SLC6A1 subfamily.

SWISS:

P30531

Gene ID:

6529

Database links:

[Entrez Gene: 415960](#) Chicken

[Entrez Gene: 6529](#) Human

[Entrez Gene: 232333](#) Mouse

[Entrez Gene: 79212](#) Rat

[Omim: 137165](#) Human

[SwissProt: P30531](#) Human

[SwissProt: P31648](#) Mouse

[SwissProt: P23978](#) Rat

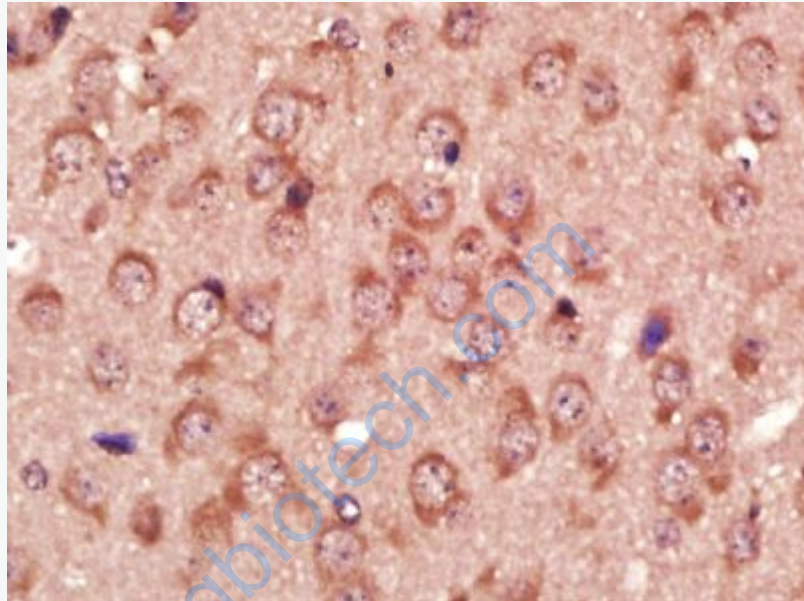
[Unigene: 443874](#) Human

[Unigene: 5260](#) Mouse

[Unigene: 10035](#) Rat

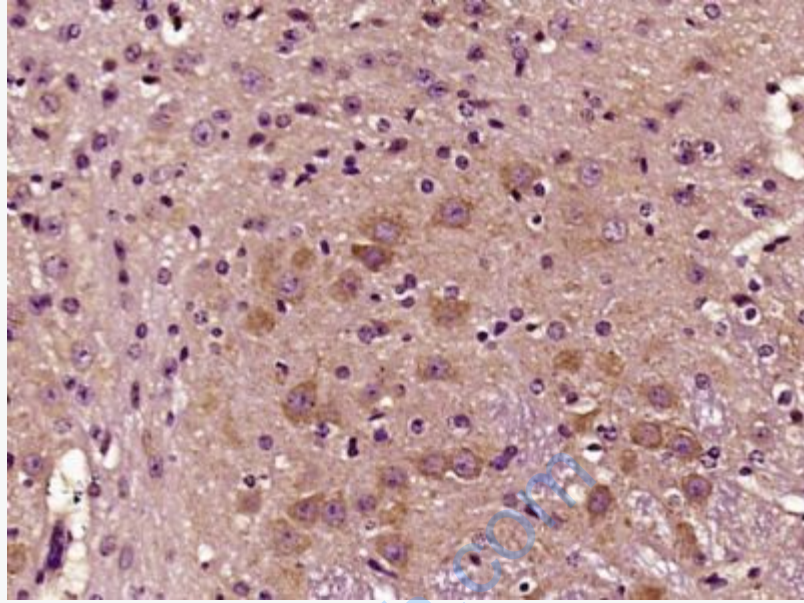
Important Note:

This product as supplied is intended for research use only, not for use in human, therapeutic or diagnostic applications.



Picture:

Paraformaldehyde-fixed, paraffin embedded (Mouse brain); Antigen retrieval by boiling in sodium citrate buffer (pH6.0) for 15min; Block endogenous peroxidase by 3% hydrogen peroxide for 20 minutes; Blocking buffer (normal goat serum) at 37°C for 30min; Antibody incubation with (GAT1 GABA Transporter 1) Polyclonal Antibody, Unconjugated (SL6617R) at 1:400 overnight at 4°C, followed by operating according to SP Kit(Rabbit) (sp-0023) instructions and DAB staining.



Paraformaldehyde-fixed, paraffin embedded (Rat brain); Antigen retrieval by boiling in sodium citrate buffer (pH6.0) for 15min; Block endogenous peroxidase by 3% hydrogen peroxide for 20 minutes; Blocking buffer (normal goat serum) at 37°C for 30min; Antibody incubation with (GAT1) Polyclonal Antibody, Unconjugated (SL6617R) at 1:400 overnight at 4°C, followed by operating according to SP Kit(Rabbit) (sp-0023) instructions and DAB staining.