



## Rabbit Anti-Frizzled 2 antibody

SL6623R

<b>Product Name:</b>	Frizzled 2
<b>Chinese Name:</b>	Wnt信号受体FZD2蛋白抗体
<b>Alias:</b>	Frizzled homolog 2; Frizzled-2; Frizzled2; Fz 2; Fz-2; Fz2; FZD 2; FZD2; FZD2 HUMAN; FzE 2; FzE2; hFz 2; hFz2.
<b>Organism Species:</b>	Rabbit
<b>Clonality:</b>	Polyclonal
<b>React Species:</b>	Human,Mouse,Rat,Dog,Pig,Cow,Rabbit,
<b>Applications:</b>	WB=1:500-2000ELISA=1:500-1000IHC-P=1:400-800 (Paraffin sections need antigen repair) not yet tested in other applications. optimal dilutions/concentrations should be determined by the end user.
<b>Molecular weight:</b>	60kDa
<b>Cellular localization:</b>	The cell membrane
<b>Form:</b>	Lyophilized or Liquid
<b>Concentration:</b>	1mg/ml
<b>immunogen:</b>	KLH conjugated synthetic peptide derived from human Frizzled 2:61-160/565<Extracellular>
<b>Lsotype:</b>	IgG
<b>Purification:</b>	affinity purified by Protein A
<b>Storage Buffer:</b>	0.01M TBS(pH7.4) with 1% BSA, 0.03% Proclin300 and 50% Glycerol.
<b>Storage:</b>	Store at -20 °C for one year. Avoid repeated freeze/thaw cycles. The lyophilized antibody is stable at room temperature for at least one month and for greater than a year when kept at -20°C. When reconstituted in sterile pH 7.4 0.01M PBS or diluent of antibody the antibody is stable for at least two weeks at 2-4 °C.
<b>PubMed:</b>	<a href="#">PubMed</a>
<b>Product Detail:</b>	The frizzled gene, originally identified in Drosophila melanogaster, is involved in the development of tissue polarity. The mammalian homolog of frizzled as well as several secreted mammalian frizzled-related proteins (FRPs) have been described. The frizzled proteins contain seven transmembrane domains, a cysteine-rich domain in the extracellular region and a carboxy terminal Ser/Thr-xxx-Val motif. They function as

receptors for Wnt and are generally coupled to G proteins. Expression of frizzled-2 can be observed in the fetal kidney and lung and in the adult ovary and colon. The Wnt/cGMP/Ca<sup>2+</sup> pathway is mediated by frizzled-2 . It binds Wnt proteins and signals by activating the release of stored calcium. Expression of frizzled-2 is regulated by Angiotensin II. Activated frizzled-2 suppresses the activity of protein kinase G, and activates NFAT-dependent transcription, the phosphatidylinositol pathway and calcium sensitive enzymes.

**Function:**

Receptor for Wnt proteins. Most of frizzled receptors are coupled to the beta-catenin canonical signaling pathway, which leads to the activation of disheveled proteins, inhibition of GSK-3 kinase, nuclear accumulation of beta-catenin and activation of Wnt target genes. A second signaling pathway involving PKC and calcium fluxes has been seen for some family members, but it is not yet clear if it represents a distinct pathway or if it can be integrated in the canonical pathway, as PKC seems to be required for Wnt-mediated inactivation of GSK-3 kinase. Both pathways seem to involve interactions with G-proteins. May be involved in transduction and intercellular transmission of polarity information during tissue morphogenesis and/or in differentiated tissues.

**Subcellular Location:**

Membrane; Multi-pass membrane protein. Cell membrane; Multi-pass membrane protein.

**Tissue Specificity:**

Widely expressed. In the adult, mainly found in heart, placenta, skeletal muscle, lung, kidney, pancreas, prostate, testis, ovary and colon. In the fetus, expressed in brain, lung and kidney. Low levels in fetal liver.

**Post-translational modifications:**

Ubiquitinated by ZNRF3, leading to its degradation by the proteasome (By similarity).

**Similarity:**

Belongs to the G-protein coupled receptor Fz/Smo family.  
Contains 1 FZ (frizzled) domain.

**SWISS:**

Q14332

**Gene ID:**

2535

**Database links:**

[Entrez Gene: 2535](#)Human

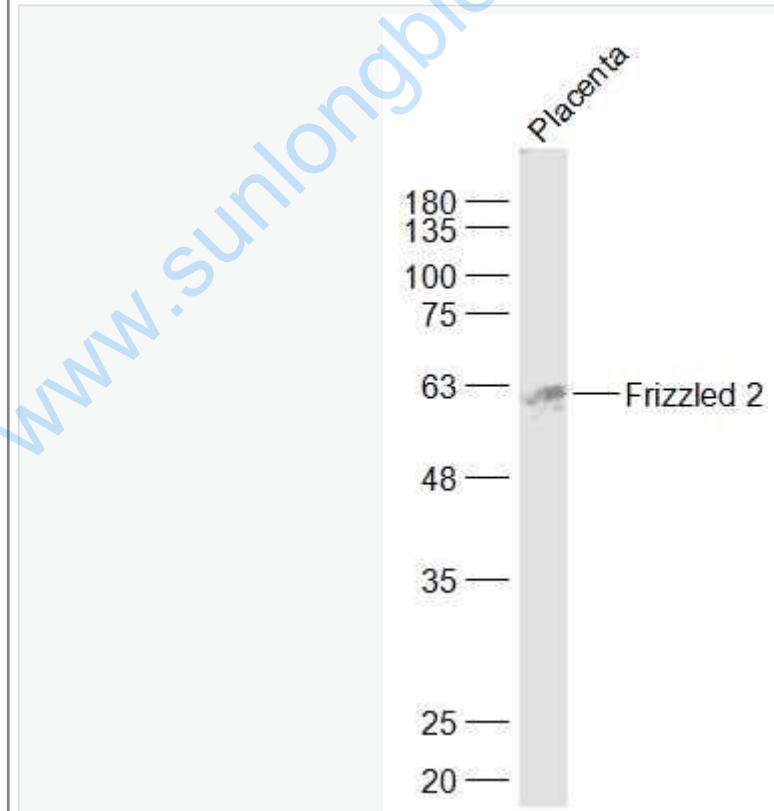
[Entrez Gene: 57265](#)Mouse

[Entrez Gene: 64512](#)Rat  
[Oimim: 600667](#)Human  
[SwissProt: Q14332](#)Human  
[SwissProt: Q9JIP6](#)Mouse  
[SwissProt: Q08464](#)Rat  
[Unigene: 142912](#)Human  
[Unigene: 597264](#)Human  
[Unigene: 36416](#)Mouse  
[Unigene: 92324](#)Rat

**Important Note:**

This product as supplied is intended for research use only, not for use in human, therapeutic or diagnostic applications.

**Picture:**



Sample:

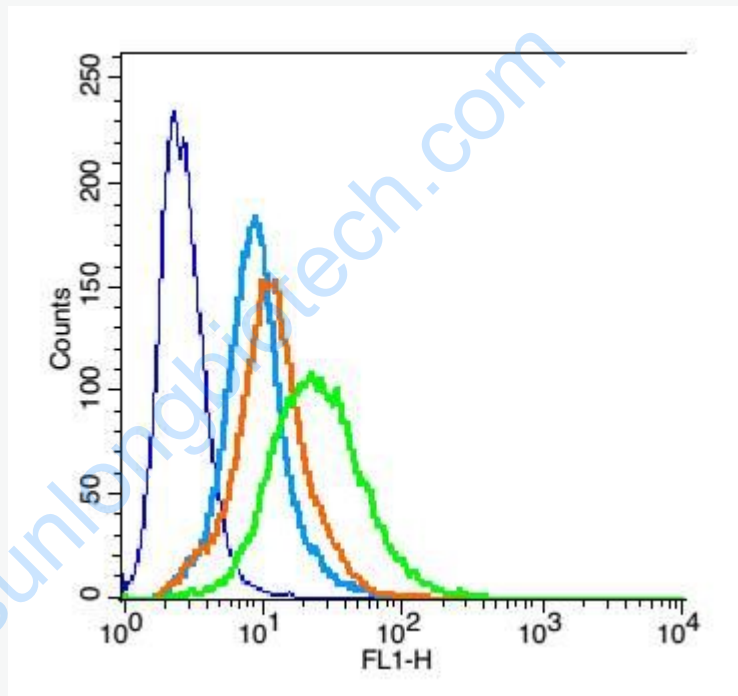
Placenta (Mouse) Lysate at 40 ug

Primary: Anti-Frizzled 2 (SL6623R) at 1/1000 dilution

Secondary: IRDye800CW Goat Anti-Rabbit IgG at 1/20000 dilution

Predicted band size: 60 kD

Observed band size: 60 kD



Blank control: H9C2 (blue)

Isotype Control Antibody: Rabbit IgG(orange) ; Secondary Antibody: Goat anti-rabbit IgG-FITC(white blue), Dilution: 1:100 in 1 X PBS containing 0.5% BSA ;

Primary Antibody Dilution: 6µl in 100 µL 1X PBS containing 0.5% BSA(green).