



Rabbit Anti-Insig2 antibody

SL6625R

Product Name:	Insig2
Chinese Name:	胰岛素诱导基因2抗体
Alias:	Hypothetical protein INSIG2; INSIG 2; INSIG-2; INSIG 2 membrane protein; INSIG2 membrane protein; Insulin induced gene 2; Insulin induced gene 2 protein; Insulin induced protein 2; MGC26273; INSI2 HUMAN.
Organism Species:	Rabbit
Clonality:	Polyclonal
React Species:	Human,Mouse,Rat,Dog,Pig,Cow,Horse,Sheep,
Applications:	WB=1:500-2000ELISA=1:500-1000IHC-P=1:400-800IHC-F=1:400-800IF=1:100-500 (Paraffin sections need antigen repair) not yet tested in other applications. optimal dilutions/concentrations should be determined by the end user.
Molecular weight:	25kDa
Cellular localization:	cytoplasmicThe cell membrane
Form:	Lyophilized or Liquid
Concentration:	1mg/ml
immunogen:	KLH conjugated synthetic peptide derived from human Insig2:65-160/225
Lsotype:	IgG
Purification:	affinity purified by Protein A
Storage Buffer:	0.01M TBS(pH7.4) with 1% BSA, 0.03% Proclin300 and 50% Glycerol.
Storage:	Store at -20 °C for one year. Avoid repeated freeze/thaw cycles. The lyophilized antibody is stable at room temperature for at least one month and for greater than a year when kept at -20°C. When reconstituted in sterile pH 7.4 0.01M PBS or diluent of antibody the antibody is stable for at least two weeks at 2-4 °C.
PubMed:	PubMed
Product Detail:	Insig2 is highly similar to the protein product encoded by gene Insig1. Both Insig1 protein and Insig2 protein are endoplasmic reticulum proteins that block the processing of sterol regulatory element binding proteins (SREBPs) by binding to SREBP cleavage-activating protein (SCAP), and thus prevent SCAP from escorting SREBPs to the Golgi.

Function:

Mediates feedback control of cholesterol synthesis by controlling SCAP and HMGCR. Functions by blocking the processing of sterol regulatory element-binding proteins (SREBPs). Capable of retaining the SCAP-SREBF2 complex in the ER thus preventing it from escorting SREBPs to the Golgi. Seems to regulate the ubiquitin-mediated proteasomal degradation of HMGCR.

Subunit:

Binds to the SCAP-SREBF2 complex only in the presence of sterols. Interacts with RNF139.

Subcellular Location:

Endoplasmic reticulum membrane; Multi-pass membrane protein.

Similarity:

Belongs to the INSIG family.

SWISS:

Q9Y5U4

Gene ID:

51141

Database links:

[Entrez Gene: 51141](#)Human

[Entrez Gene: 72999](#)Mouse

[Entrez Gene: 288985](#)Rat

[Omim: 608660](#)Human

[SwissProt: Q9Y5U4](#)Human

[SwissProt: Q91WG1](#)Mouse

[SwissProt: Q80UA9](#)Rat

[Unigene: 7089](#)Human

[Unigene: 27136](#)Mouse

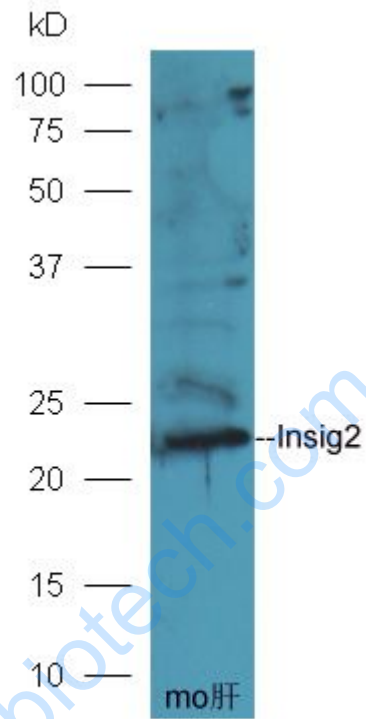
[Unigene: 486216](#)Mouse

[Unigene: 16736](#)Rat

Important Note:

This product as supplied is intended for research use only, not for use in human, therapeutic or diagnostic applications.

Picture:



Sample: Liver (Mouse) Lysate at 40 ug

Primary: Anti-Insig2 (SL6625R) at 1/300 dilution

Secondary: HRP conjugated Goat-Anti-rabbit IgG (SL6625R) at 1/5000 dilution

Predicted band size: 25 kD

Observed band size: 23 kD