



## Rabbit Anti-GPR24 antibody

SL6626R

<b>Product Name:</b>	GPR24
<b>Chinese Name:</b>	G protein-coupled receptor24抗体
<b>Alias:</b>	MCHR; G protein coupled receptor 24; GPCR MCH1; GPCR SLC/MCH1; GPR24; MCH receptor 1; MCH1R; Melanin concentrating hormone receptor 1; SLC-1; Somatostatin receptor like protein; MCHR1_HUMAN.
<b>Organism Species:</b>	Rabbit
<b>Clonality:</b>	Polyclonal
<b>React Species:</b>	Human,Mouse,Rat,Dog,Cow,Horse,
<b>Applications:</b>	ELISA=1:500-1000IHC-P=1:400-800IHC-F=1:400-800ICC=1:100-500IF=1:100-500 (Paraffin sections need antigen repair) not yet tested in other applications. optimal dilutions/concentrations should be determined by the end user.
<b>Molecular weight:</b>	46kDa
<b>Cellular localization:</b>	The cell membrane
<b>Form:</b>	Lyophilized or Liquid
<b>Concentration:</b>	1mg/ml
<b>immunogen:</b>	KLH conjugated synthetic peptide derived from human MCHR/GPR24:75-180/422<Extracellular>
<b>Lsotype:</b>	IgG
<b>Purification:</b>	affinity purified by Protein A
<b>Storage Buffer:</b>	0.01M TBS(pH7.4) with 1% BSA, 0.03% Proclin300 and 50% Glycerol.
<b>Storage:</b>	Store at -20 °C for one year. Avoid repeated freeze/thaw cycles. The lyophilized antibody is stable at room temperature for at least one month and for greater than a year when kept at -20°C. When reconstituted in sterile pH 7.4 0.01M PBS or diluent of antibody the antibody is stable for at least two weeks at 2-4 °C.
<b>PubMed:</b>	<a href="#">PubMed</a>
<b>Product Detail:</b>	MCHR, a member of the G protein coupled receptor family 1, is an integral plasma membrane protein which binds melanin concentrating hormone. MCHR can inhibit cAMP accumulation and stimulate intracellular calcium flux, and is probably involved in the neuronal regulation of food consumption. Although structurally similar to

somatostatin receptors, MCHR does not seem to bind somatostatin.

**Function:**

Receptor for melanin-concentrating hormone, coupled to both G proteins that inhibit adenylyl cyclase and G proteins that activate phosphoinositide hydrolysis.

**Subunit:**

Interacts with NCDN.

**Subcellular Location:**

Cell Membrane; multi-pass membrane protein

**Tissue Specificity:**

Highest level in brain, particularly in the frontal cortex and hypothalamus, lower levels in the liver and heart.

**Similarity:**

Belongs to the G-protein coupled receptor 1 family.

**SWISS:**

Q99705

**Gene ID:**

2847

**Database links:**

[Entrez Gene: 2847](#) Human

[Entrez Gene: 207911](#) Mouse

[Entrez Gene: 83567](#) Rat

[Omim: 601751](#) Human

[SwissProt: Q99705](#) Human

[SwissProt: Q8JZL2](#) Mouse

[SwissProt: P97639](#) Rat

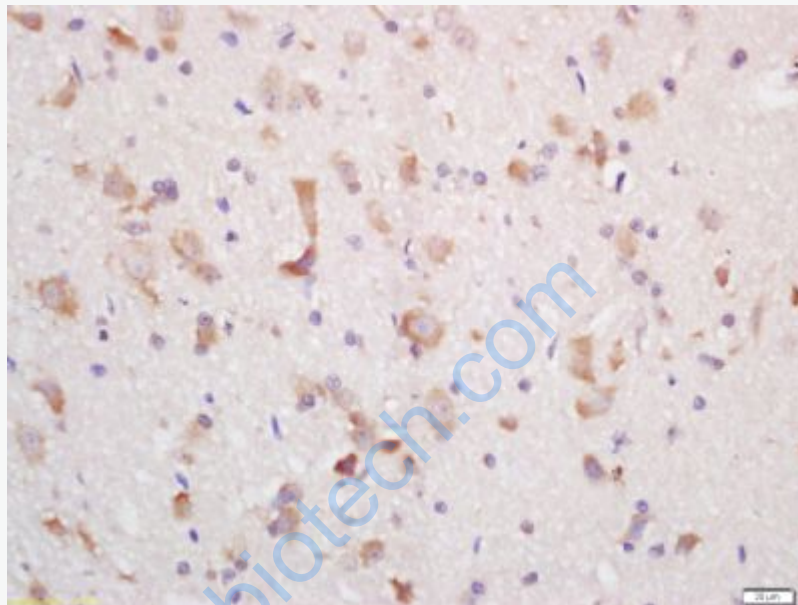
[Unigene: 248122](#) Human

[Unigene: 323523](#) Mouse

[Unigene: 10822](#) Rat

**Important Note:**

This product as supplied is intended for research use only, not for use in human, therapeutic or diagnostic applications.



**Picture:**

Tissue/cell: rat brain tissue; 4% Paraformaldehyde-fixed and paraffin-embedded;  
Antigen retrieval: citrate buffer ( 0.01M, pH 6.0 ), Boiling bathing for 15min; Block endogenous peroxidase by 3% Hydrogen peroxide for 30min; Blocking buffer (normal goat serum,C-0005) at 37°C for 20 min;  
Incubation: Anti-GPR24 Polyclonal Antibody, Unconjugated(SL6626R) 1:200, overnight at 4°C, followed by conjugation to the secondary antibody(SP-0023) and DAB(C-0010) staining