


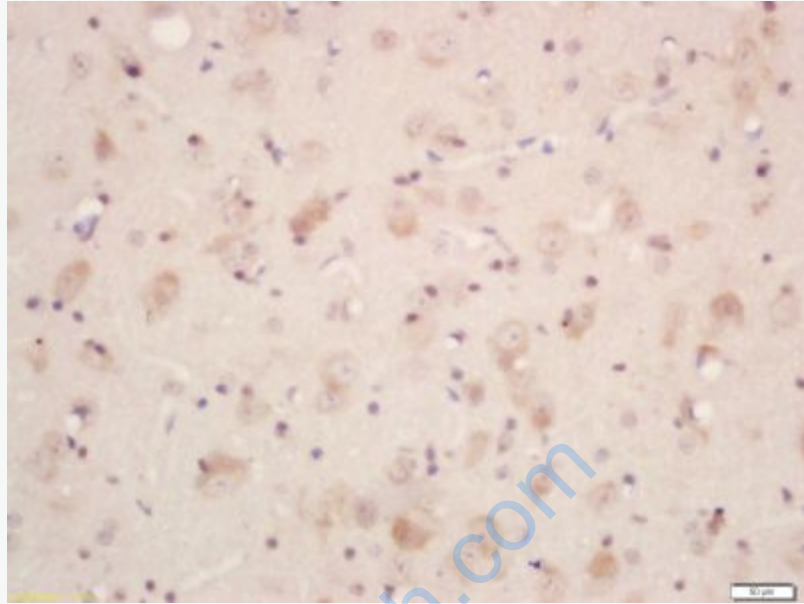


Rabbit Anti-Neurotensin antibody

SL6631R

| | |
|---|--|
| Product Name: | Neurotensin |
| Chinese Name: | 神经紧张素抗体 |
| Alias: | Human proneurotensin; NT; NT/N; NTRH; NTS1; Proneuromedin N mRNA; NEUT_HUMAN; |
| 文献引用  : | Specific References(1) SL6631R has been referenced in 1 publications. [IF=1.64]SAKUMOTO, Ryosuke, et al. "Comparison of the global gene expression profiles in the bovine endometrium between summer and autumn." Journal of Reproduction and Development 0 (2015).IHC-P;Bovine. PubMed:25994242 |
| Organism Species: | Rabbit |
| Clonality: | Polyclonal |
| React Species: | Human,Mouse,Rat,Dog,Pig,Cow,Rabbit, |
| Applications: | ELISA=1:500-1000IHC-P=1:400-800IHC-F=1:400-800IF=1:100-500 (Paraffin sections need antigen repair) not yet tested in other applications. optimal dilutions/concentrations should be determined by the end user. |
| Molecular weight: | 19kDa |
| Cellular localization: | cytoplasmicSecretory protein |
| Form: | Lyophilized or Liquid |
| Concentration: | 1mg/ml |
| immunogen: | KLH conjugated synthetic peptide derived from human Neurotensin:101-170/170 |
| Lsotype: | IgG |
| Purification: | affinity purified by Protein A |
| Storage Buffer: | 0.01M TBS(pH7.4) with 1% BSA, 0.03% Proclin300 and 50% Glycerol. |
| Storage: | Store at -20 °C for one year. Avoid repeated freeze/thaw cycles. The lyophilized antibody is stable at room temperature for at least one month and for greater than a year when kept at -20°C. When reconstituted in sterile pH 7.4 0.01M PBS or diluent of |

| | |
|------------------------|--|
| | antibody the antibody is stable for at least two weeks at 2-4 °C. |
| PubMed: | PubMed |
| Product Detail: | <p>This gene encodes a common precursor for two peptides, neuromedin N and neurotensin. Neurotensin is a secreted tridecapeptide, which is widely distributed throughout the central nervous system, and may function as a neurotransmitter or a neuromodulator. It may be involved in dopamine-associated pathophysiological events, in the maintenance of gut structure and function, and in the regulation of fat metabolism. Tissue-specific processing may lead to the formation in some tissues of larger forms of neuromedin N and neurotensin. The large forms may represent more stable peptides that are also biologically active. [provided by RefSeq, Jul 2008]. Cellular localization: Secreted. Cytoplasmic vesicle > secretory vesicle. Packaged within secretory vesicles.</p> <p>Function: Neurotensin may play an endocrine or paracrine role in the regulation of fat metabolism. It causes contraction of smooth muscle.</p> <p>Subcellular Location: Secreted. Cytoplasmic vesicle, secretory vesicle. Note=Packaged within secretory vesicles.</p> <p>Similarity: Belongs to the neurotensin family.</p> <p>SWISS: P30990</p> <p>Gene ID: 4922</p> <p>Database links: Entrez Gene: 4922Human Omim: 162650Human SwissProt: P30990Human Unigene: 80962Hum</p> <p>Important Note: This product as supplied is intended for research use only, not for use in human, therapeutic or diagnostic applications.</p> |



Picture:

Tissue/cell: rat brain tissue; 4% Paraformaldehyde-fixed and paraffin-embedded;
Antigen retrieval: citrate buffer (0.01M, pH 6.0), Boiling bathing for 15min; Block endogenous peroxidase by 3% Hydrogen peroxide for 30min; Blocking buffer (normal goat serum,C-0005) at 37°C for 20 min;
Incubation: Anti-Neurotensin Polyclonal Antibody, Unconjugated(SL6631R) 1:200, overnight at 4°C, followed by conjugation to the secondary antibody(SP-0023) and DAB(C-0010) staining