



Rabbit Anti-Calumenin antibody

SL6658R

Product Name:	Calumenin
Chinese Name:	钙腔蛋白
Alias:	CALU; CALU_HUMAN; Calumenin; Crocalbin; crocalbin-like protein; multiple EF-hand protein.
Organism Species:	Rabbit
Clonality:	Polyclonal
React Species:	Human,Mouse,Rat,Dog,Pig,Cow,Horse,Rabbit,
Applications:	WB=1:500-2000ELISA=1:500-1000IHC-P=1:400-800IHC-F=1:400-800IF=1:100-500 (Paraffin sections need antigen repair) not yet tested in other applications. optimal dilutions/concentrations should be determined by the end user.
Molecular weight:	35kDa
Cellular localization:	cytoplasmicSecretory protein
Form:	Lyophilized or Liquid
Concentration:	1mg/ml
immunogen:	KLH conjugated synthetic peptide derived from human Calumenin:231-315/315
Lsotype:	IgG
Purification:	affinity purified by Protein A
Storage Buffer:	0.01M TBS(pH7.4) with 1% BSA, 0.03% Proclin300 and 50% Glycerol.
Storage:	Store at -20 °C for one year. Avoid repeated freeze/thaw cycles. The lyophilized antibody is stable at room temperature for at least one month and for greater than a year when kept at -20°C. When reconstituted in sterile pH 7.4 0.01M PBS or diluent of antibody the antibody is stable for at least two weeks at 2-4 °C.
PubMed:	PubMed
Product Detail:	Involved in regulation of vitamin K-dependent carboxylation of multiple amino-terminal glutamate residues. Seems to inhibit gamma-carboxylase GGCX. Binds 7 calcium ions with a low affinity.
	Function:

Involved in regulation of vitamin K-dependent carboxylation of multiple amino-terminal glutamate residues. Seems to inhibit gamma-carboxylase GGCX. Binds 7 calcium ions with a low affinity.

Subunit:

Interacts with GGCX.

Subcellular Location:

Endoplasmic reticulum lumen. Secreted. Melanosome. Sarcoplasmic reticulum lumen. Identified by mass spectrometry in melanosome fractions from stage I to stage IV.

Tissue Specificity:

Ubiquitously expressed. Expressed at high levels in heart, placenta and skeletal muscle, at lower levels in lung, kidney and pancreas and at very low levels in brain and liver.

Similarity:

Belongs to the CREC family.
Contains 6 EF-hand domains.

SWISS:

O43852

Gene ID:

813

Database links:

[Entrez Gene: 813](#)Human

[Entrez Gene: 12321](#)Mouse

[Entrez Gene: 64366](#)Rat

[Oimim: 603420](#)Human

[SwissProt: O43852](#)Human

[SwissProt: O35887](#)Mouse

[SwissProt: O35783](#)Rat

[Unigene: 592258](#)Human

[Unigene: 7753](#)Human

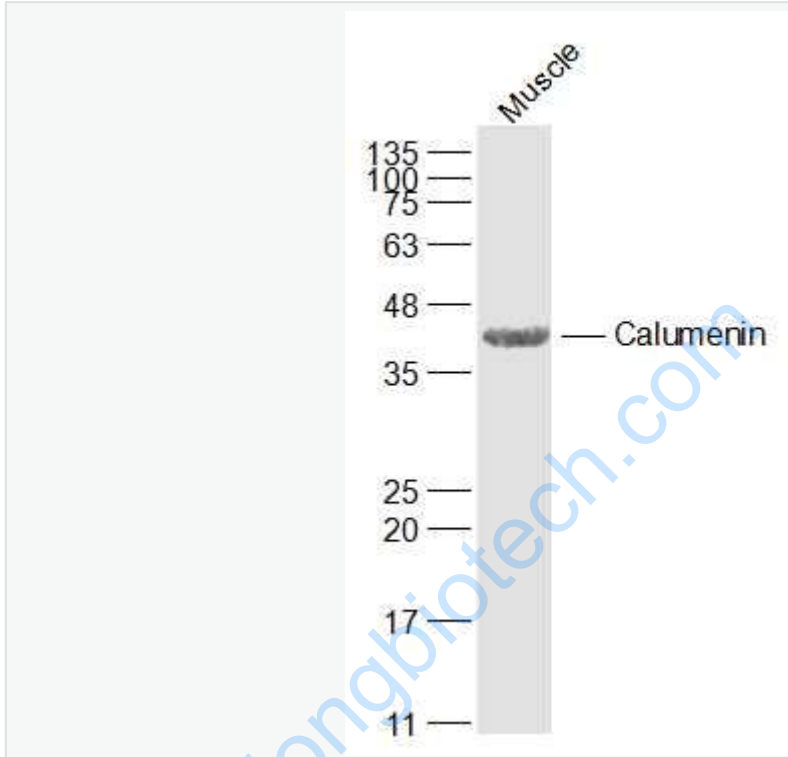
[Unigene: 392075](#)Mouse

[Unigene: 1841](#)Rat

Important Note:

This product as supplied is intended for research use only, not for use in human, therapeutic or diagnostic applications.

Picture:



Sample:

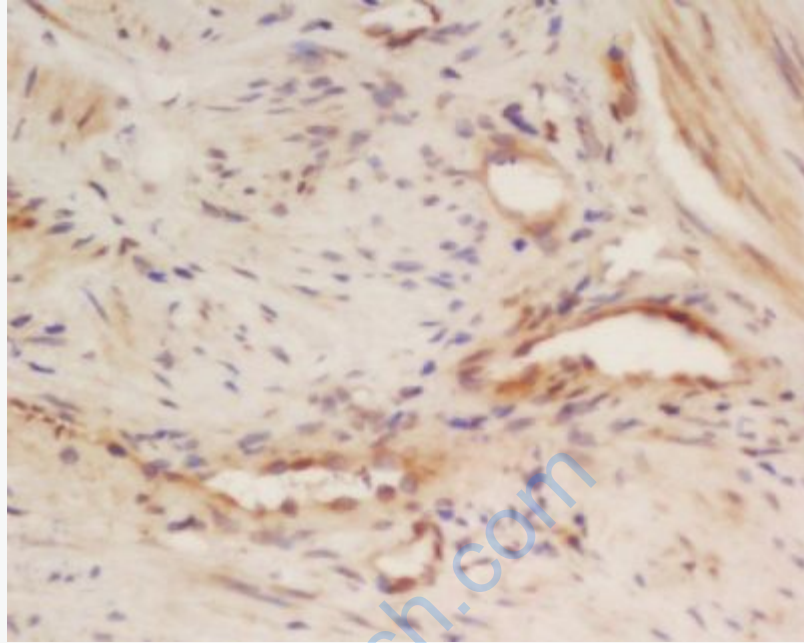
Muscle (Mouse) Lysate at 40 ug

Primary: Anti-Calumenin (SL6658R) at 1/1000 dilution

Secondary: IRDye800CW Goat Anti-Rabbit IgG at 1/20000 dilution

Predicted band size: 35 kD

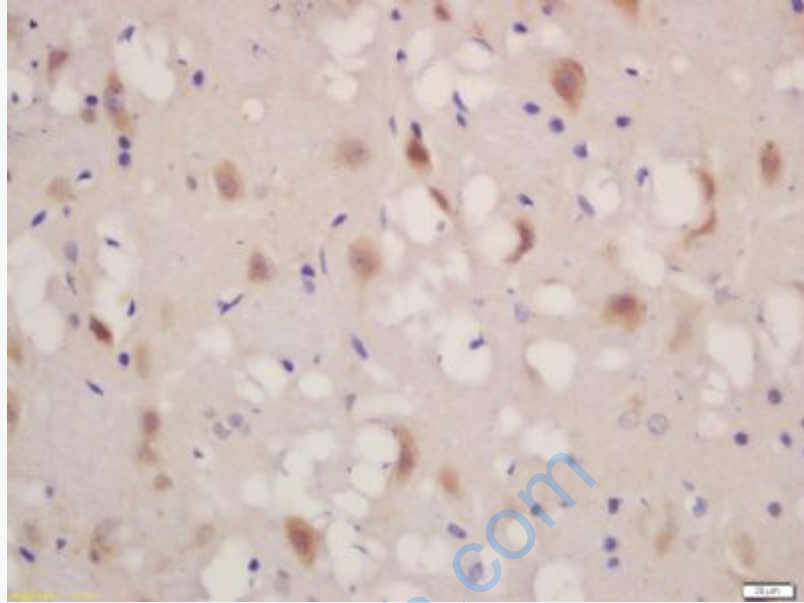
Observed band size: 40 kD



Tissue/cell: human cervical carcinoma; 4% Paraformaldehyde-fixed and paraffin-embedded;

Antigen retrieval: citrate buffer (0.01M, pH 6.0), Boiling bathing for 15min; Block endogenous peroxidase by 3% Hydrogen peroxide for 30min; Blocking buffer (normal goat serum,C-0005) at 37°C for 20 min;

Incubation: Anti-Calumenin Polyclonal Antibody, Unconjugated(SL6658R) 1:200, overnight at 4°C, followed by conjugation to the secondary antibody(SP-0023) and DAB(C-0010) staining



Tissue/cell: rat brain tissue; 4% Paraformaldehyde-fixed and paraffin-embedded;
Antigen retrieval: citrate buffer (0.01M, pH 6.0), Boiling bathing for 15min; Block endogenous peroxidase by 3% Hydrogen peroxide for 30min; Blocking buffer (normal goat serum,C-0005) at 37°C for 20 min;
Incubation: Anti-Calumenin Polyclonal Antibody, Unconjugated(SL6658R) 1:200, overnight at 4°C, followed by conjugation to the secondary antibody(SP-0023) and DAB(C-0010) staining