



Rabbit Anti-IGF2R/M6PR antibody

SL6670R

Product Name:	IGF2R/M6PR
Chinese Name:	胰岛素样生长因子2受体抗体
Alias:	300 kDa mannose 6-phosphate receptor; Cation independent mannose 6 phosphate receptor; Cation-independent mannose-6-phosphate receptor; CD222; CD222 antigen; CI Man 6 P receptor; CI Man-6-P receptor; CI MPR; CI-MPR; CIMPR; IGF 2 receptor; IGF 2R; IGF II receptor; IGF-II receptor; IGF2 receptor; IGF2R; Insulin like growth factor 2 receptor; Insulin like growth factor II receptor; Insulin-like growth factor 2 receptor; Insulin-like growth factor II receptor; M6P R; M6P/IGF2 receptor; M6P/IGF2R; M6PR; MPR 300; MPR300; MPRI; MPRI_HUMAN.
文献引用 PubMed :	<p>Specific References(2) SL6670R has been referenced in 2 publications.</p> <p>[IF=5.68]Geng, Xiao-Rui, et al. "Insulin-like growth factor-2 enhances functions of Ag specific regulatory B cells." Journal of Biological Chemistry (2014).WB;Mouse. PubMed:24811165</p> <p>[IF=2.38]Yang, Shaobo, et al. "Insulin-Like Growth Factor-1 Modulates Polycomb Cbx8 Expression and Inhibits Colon Cancer Cell Apoptosis." Cell Biochemistry and Biophysics (2014): 1-5.WB;Human. PubMed:25398592</p>
Organism Species:	Rabbit
Clonality:	Polyclonal
React Species:	Human,Mouse,Rat,Chicken,Dog,Pig,Cow,Horse,Rabbit,
Applications:	ELISA=1:500-1000IHC-P=1:400-800IHC-F=1:400-800Flow-Cyt=5ug/TestIF=1:100-500 (Paraffin sections need antigen repair) not yet tested in other applications. optimal dilutions/concentrations should be determined by the end user.
Molecular weight:	300kDa
Cellular localization:	cytoplasmicThe cell membraneExtracellular matrix

Form:	Lyophilized or Liquid
Concentration:	1mg/ml
immunogen:	KLH conjugated synthetic peptide derived from human IGF2R:2201-2400/2491
Lsotype:	IgG
Purification:	affinity purified by Protein A
Storage Buffer:	0.01M TBS(pH7.4) with 1% BSA, 0.03% Proclin300 and 50% Glycerol.
Storage:	Store at -20 °C for one year. Avoid repeated freeze/thaw cycles. The lyophilized antibody is stable at room temperature for at least one month and for greater than a year when kept at -20°C. When reconstituted in sterile pH 7.4 0.01M PBS or diluent of antibody the antibody is stable for at least two weeks at 2-4 °C.
PubMed:	PubMed
Product Detail:	<p>Transport of phosphorylated lysosomal enzymes from the Golgi complex and the cell surface to lysosomes. Lysosomal enzymes bearing phosphomannosyl residues bind specifically to mannose-6-phosphate receptors in the Golgi apparatus and the resulting receptor-ligand complex is transported to an acidic prelysosomal compartment where the low pH mediates the dissociation of the complex. This receptor also binds IGF2. Acts as a positive regulator of T-cell coactivation, by binding DPP4.</p> <p>Function: Transport of phosphorylated lysosomal enzymes from the Golgi complex and the cell surface to lysosomes. Lysosomal enzymes bearing phosphomannosyl residues bind specifically to mannose-6-phosphate receptors in the Golgi apparatus and the resulting receptor-ligand complex is transported to an acidic prelysosomal compartment where the low pH mediates the dissociation of the complex. This receptor also binds IGF2. Acts as a positive regulator of T-cell coactivation, by binding DPP4.</p> <p>Subunit: Binds HA-I and HA-II plasma membrane adapters (By similarity). Interacts with DPP4; the interaction is direct. Binds GGA1, GGA2 and GGA3.</p> <p>Subcellular Location: Lysosome membrane. Colocalized with DPP4 in internalized cytoplasmic vesicles adjacent to the cell surface.</p> <p>Similarity: Belongs to the MRL1/IGF2R family. Contains 1 fibronectin type-II domain.</p> <p>SWISS: P11717</p> <p>Gene ID: 3482</p> <p>Database links:</p>

[Entrez Gene: 281849](#) Cow

[Entrez Gene: 3482](#) Human

[Entrez Gene: 16004](#) Mouse

[Entrez Gene: 25151](#) Rat

[Omim: 147280](#) Human

[SwissProt: P08169](#) Cow

[SwissProt: P11717](#) Human

[SwissProt: Q07113](#) Mouse

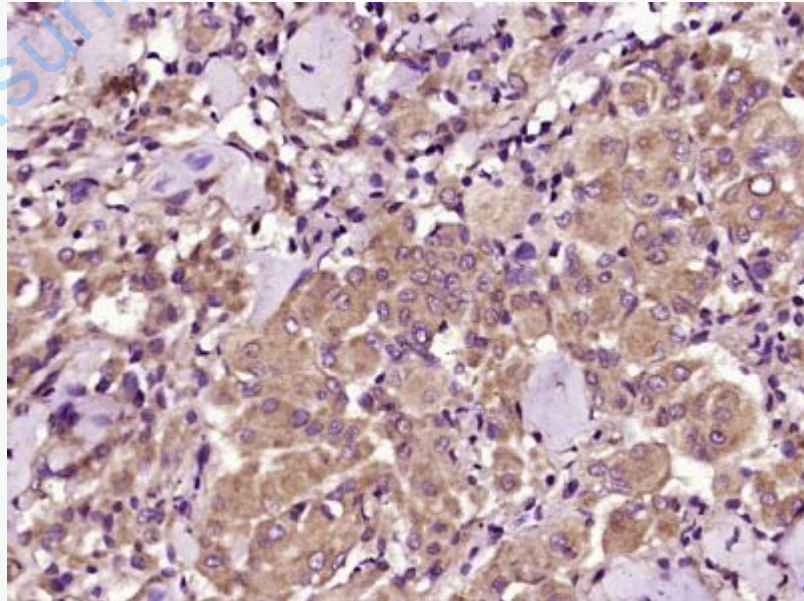
[Unigene: 487062](#) Human

[Unigene: 26553](#) Mouse

Important Note:

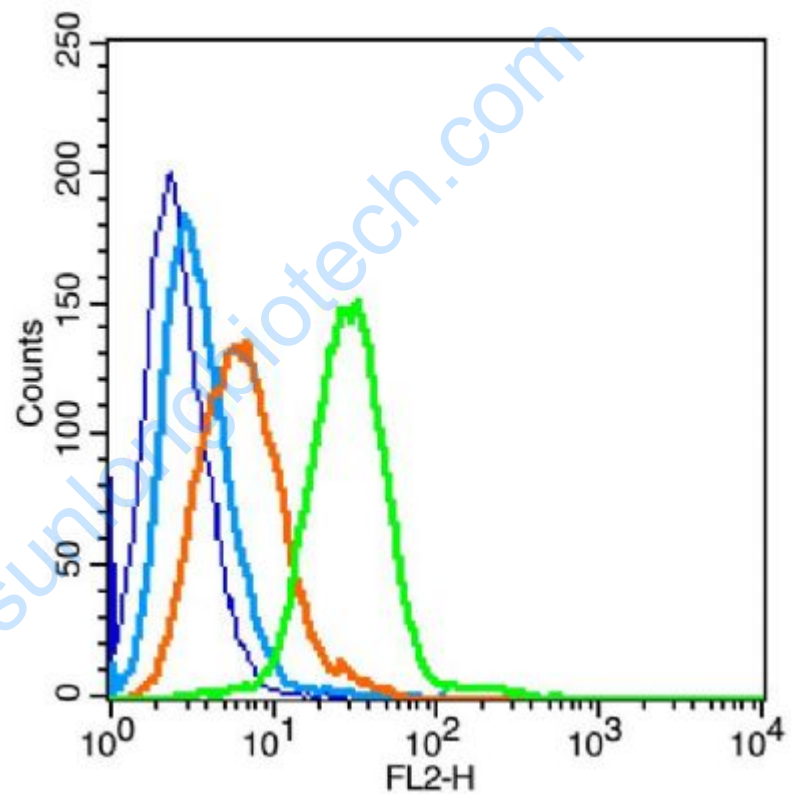
This product as supplied is intended for research use only, not for use in human, therapeutic or diagnostic applications.

Picture:



Paraformaldehyde-fixed, paraffin embedded (human meningioma); Antigen retrieval

by boiling in sodium citrate buffer (pH6.0) for 15min; Block endogenous peroxidase by 3% hydrogen peroxide for 20 minutes; Blocking buffer (normal goat serum) at 37°C for 30min; Antibody incubation with (IGF2R) Polyclonal Antibody, Unconjugated (SL6670R) at 1:400 overnight at 4°C, followed by operating according to SP Kit(Rabbit) (sp-0023) instructions and DAB staining.



Blank control(blue): Raji (fixed with 2% paraformaldehyde (10 min)).

Primary Antibody:Rabbit Anti-IGF2R M6PR antibody(SL6670R), Dilution: 5µg in 100 µL 1X PBS containing 0.5% BSA;

Isotype Control Antibody: Rabbit IgG(orange) ,used under the same conditions);

Secondary Antibody: Goat anti-rabbit IgG-PE(white blue), Dilution: 1:200 in 1 X

	PBS containing 0.5% BSA.
--	--------------------------

www.sunlongbiotech.com