



## Rabbit Anti-Upstream Binding Protein 1 antibody

SL6730R

<b>Product Name:</b>	Upstream Binding Protein 1
<b>Chinese Name:</b>	上游Binding protein1 抗体
<b>Alias:</b>	LBP 1a; Cp2b; DKFZp686L1745; LBP 1a; LBP 1B; LBP1; LBP1A; LBP1B; NF2d9; Upstream binding protein 1; Transcription factor LBP-1; UBIP1 HUMAN.
<b>Organism Species:</b>	Rabbit
<b>Clonality:</b>	Polyclonal
<b>React Species:</b>	Human,Mouse,Rat,Chicken,Dog,Pig,Cow,Horse,
<b>Applications:</b>	WB=1:500-2000ELISA=1:500-1000IHC-P=1:400-800IHC-F=1:400-800IF=1:100-500 (Paraffin sections need antigen repair) not yet tested in other applications. optimal dilutions/concentrations should be determined by the end user.
<b>Molecular weight:</b>	60kDa
<b>Cellular localization:</b>	The nucleus
<b>Form:</b>	Lyophilized or Liquid
<b>Concentration:</b>	1mg/ml
<b>immunogen:</b>	KLH conjugated synthetic peptide derived from human Upstream Binding Protein 1:351-450/540
<b>Lsotype:</b>	IgG
<b>Purification:</b>	affinity purified by Protein A
<b>Storage Buffer:</b>	0.01M TBS(pH7.4) with 1% BSA, 0.03% Proclin300 and 50% Glycerol.
<b>Storage:</b>	Store at -20 °C for one year. Avoid repeated freeze/thaw cycles. The lyophilized antibody is stable at room temperature for at least one month and for greater than a year when kept at -20°C. When reconstituted in sterile pH 7.4 0.01M PBS or diluent of antibody the antibody is stable for at least two weeks at 2-4 °C.
<b>PubMed:</b>	<a href="#">PubMed</a>
<b>Product Detail:</b>	Functions as a transcriptional activator in a promoter context-dependent manner. Modulates the placental expression of CYP11A1. Involved in regulation of the alpha-globin gene in erythroid cells. Activation of the alpha-globin promoter in erythroid cells is via synergistic interaction with TFCP2 (By similarity). Involved in regulation of the alpha-globin gene in erythroid cells. Binds strongly to sequences around the HIV-1

initiation site and weakly over the TATA-box. Represses HIV-1 transcription by inhibiting the binding of TFIID to the TATA-box.

**Function:**

UBP1 is an important SF1 independent transcriptional activator stimulating P450sc expression in human placental JEG 3 cells.

**Subunit:**

Interacts with TFCP2. Interacts with PIAS1, and is probably part of a complex containing TFCP2, UBP1 and PIAS1.

**Subcellular Location:**

Nucleus.

**Tissue Specificity:**

Expressed in adrenal tissue, JEG-3, NCI-H295A, HepG2 and HeLa cell lines.

**Similarity:**

Belongs to the grh/CP2 family. CP2 subfamily.

**SWISS:**

Q9NZI7

**Gene ID:**

7342

**Database links:**

[Entrez Gene: 7342](#)Human

[Entrez Gene: 22221](#)Mouse

[Entrez Gene: 301038](#)Rat

[Omim: 609784](#)Human

[SwissProt: Q86Y57](#)Human

[SwissProt: Q9NZI7](#)Human

[SwissProt: Q60786](#)Mouse

[SwissProt: Q811S7](#)Mouse

[SwissProt: Q8BH21](#)Mouse

[Unigene: 118041](#)Human

[Unigene: 729120](#)Human

[Unigene: 28052](#)Mouse

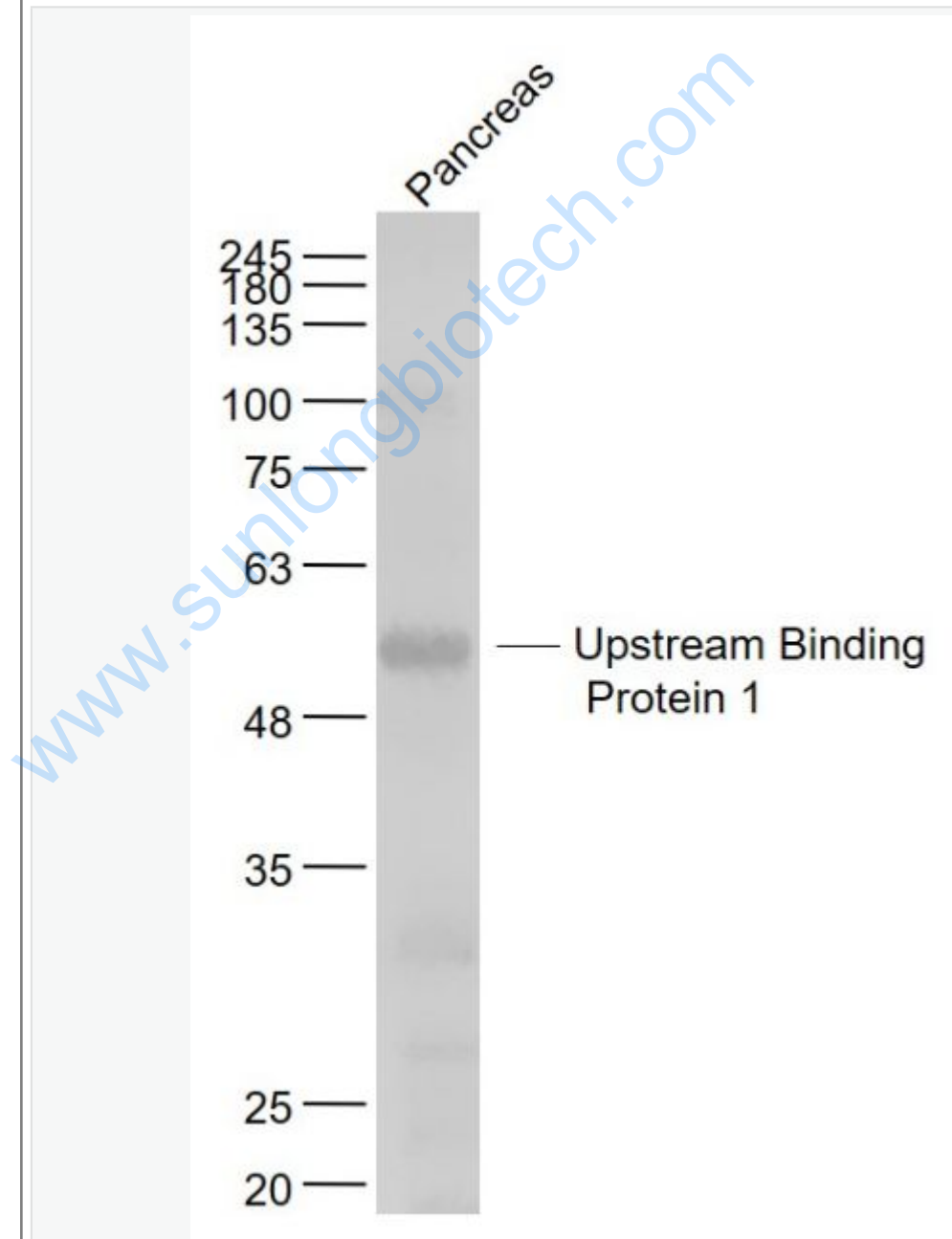
[Unigene: 386808](#)Mouse

[Unigene: 15705](#)Rat

**Important Note:**

This product as supplied is intended for research use only, not for use in human, therapeutic or diagnostic applications.

Picture:



Sample:

Pancreas (Mouse) Lysate at 40 ug

Primary: Anti- Upstream Binding Protein 1 (SL6730R) at 1/1000 dilution

Secondary: IRDye800CW Goat Anti-Rabbit IgG at 1/20000 dilution

Predicted band size: 60 kD

Observed band size: 56 kD

[www.sunlongbiotech.com](http://www.sunlongbiotech.com)