



Rabbit Anti-SDF4 antibody

SL6732R

Product Name:	SDF4
Chinese Name:	基质细胞衍生因子4抗体(钙Binding protein)
Alias:	CAB45; Calcium binding protein; PSEC0034; SDF 4; SDF-4; Stromal cell derived factor 4; CAB45_HUMAN.
Organism Species:	Rabbit
Clonality:	Polyclonal
React Species:	Human,Mouse,Rat,Horse,
Applications:	WB=1:500-2000ELISA=1:500-1000IHC-P=1:400-800IHC-F=1:400-800IF=1:100-500 (Paraffin sections need antigen repair) not yet tested in other applications. optimal dilutions/concentrations should be determined by the end user.
Molecular weight:	38kDa
Cellular localization:	cytoplasmicThe cell membraneExtracellular matrix
Form:	Lyophilized or Liquid
Concentration:	1mg/ml
immunogen:	KLH conjugated synthetic peptide derived from human SDF4:121-230/362
Lsotype:	IgG
Purification:	affinity purified by Protein A
Storage Buffer:	0.01M TBS(pH7.4) with 1% BSA, 0.03% Proclin300 and 50% Glycerol.
Storage:	Store at -20 °C for one year. Avoid repeated freeze/thaw cycles. The lyophilized antibody is stable at room temperature for at least one month and for greater than a year when kept at -20°C. When reconstituted in sterile pH 7.4 0.01M PBS or diluent of antibody the antibody is stable for at least two weeks at 2-4 °C.
PubMed:	PubMed
Product Detail:	This gene encodes a stromal cell derived factor that is a member of the CREC protein family. The encoded protein contains six EF-hand motifs and calcium-binding motifs. This protein localizes to the Golgi lumen and may be involved in regulating calcium dependent cellular activities. [provided by RefSeq, Sep 2011]. Function:

May regulate calcium-dependent activities in the endoplasmic reticulum lumen or post-ER compartment (By similarity).

Isoform 5 may be involved in the exocytosis of zymogens by pancreatic acini.
[COFACTOR] Binds calcium (By similarity). Isoform 5 binds calcium.

Subunit:

Isoform 5 interacts with STXBP1; the interaction is enhanced in presence of calcium.
Isoform 5 interacts with STX3.

Subcellular Location:

Isoform 1: Golgi apparatus lumen (By similarity).

Isoform 5: Cytoplasm. Cell projection, bleb. Note=Isoform 5 colocalizes with STX3 and STXBP1 isoform 2 at the plasma membrane and cell surface blebs.

Tissue Specificity:

Ubiquitous. Isoform 5 is expressed in pancreas.

Similarity:

Belongs to the CREC family.
Contains 6 EF-hand domains.

SWISS:

Q9BRK5

Gene ID:

51150

Database links:

[Entrez Gene: 51150](#)Human

[Entrez Gene: 20318](#)Mouse

[Entrez Gene: 155173](#)Rat

[Omim: 614282](#)Human

[SwissProt: Q9BRK5](#)Human

[SwissProt: Q61112](#)Mouse

[SwissProt: Q91ZS3](#)Rat

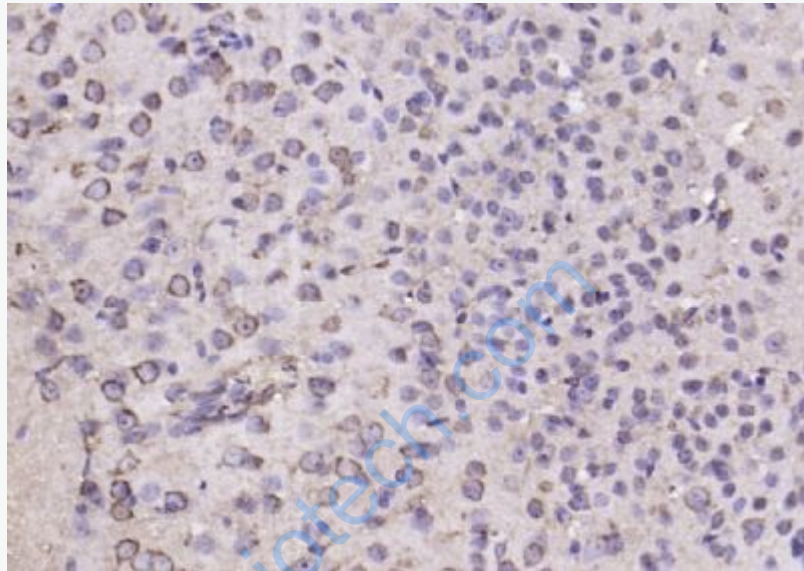
[Unigene: 42806](#)Human

[Unigene: 293517](#)Mouse

[Unigene: 12964](#)Rat

Important Note:

This product as supplied is intended for research use only, not for use in human, therapeutic or diagnostic applications.



Picture:

Paraformaldehyde-fixed, paraffin embedded (mouse brain); Antigen retrieval by boiling in sodium citrate buffer (pH6.0) for 15min; Block endogenous peroxidase by 3% hydrogen peroxide for 20 minutes; Blocking buffer (normal goat serum) at 37°C for 30min; Antibody incubation with (SDF4) Polyclonal Antibody, Unconjugated (SL6732R) at 1:200 overnight at 4°C, followed by operating according to SP Kit(Rabbit) (sp-0023) instructions and DAB staining.