



## Rabbit Anti-phospho-MAP3K9+MAP3K10 (Thr312 + Thr266) antibody

SL6779R

<b>Product Name:</b>	phospho-MAP3K9+MAP3K10 (Thr312 + Thr266)
<b>Chinese Name:</b>	磷酸化丝裂原活化蛋白激酶3K9抗体
<b>Alias:</b>	MAP3K9 +MAP3K10 (phospho T312 + T266); MAP3K9 + MAP3K10(phospho T312 + T266); phospho-MAP3K9(Thr312)/MAP3K10( Thr266); p-MAP3K9; M3K9_HUMAN; M3K10_HUMAN; MAPKKK9; MEKK10; MEKK9; Mitogen activated protein kinase kinase kinase 10; Mitogen activated protein kinase kinase kinase 9; Mixed lineage kinase 1 (tyr and ser/thr specificity); Mixed lineage kinase 2; MKN28 derived nonreceptor_type serine/threonine kinase; MKN28 kinase; MLK1; MLK2; MST; PRKE1; Protein kinase MST.
<b>Organism Species:</b>	Rabbit
<b>Clonality:</b>	Polyclonal
<b>React Species:</b>	Human,Mouse,Rat,Chicken,Dog,Pig,Cow,Horse,Rabbit,
<b>Applications:</b>	WB=1:500-2000ELISA=1:500-1000IHC-P=1:400-800IHC-F=1:400-800IF=1:100-500 (Paraffin sections need antigen repair) not yet tested in other applications. optimal dilutions/concentrations should be determined by the end user.
<b>Molecular weight:</b>	121/105kDa
<b>Cellular localization:</b>	cytoplasmic
<b>Form:</b>	Lyophilized or Liquid
<b>Concentration:</b>	1mg/ml
<b>immunogen:</b>	KLH conjugated synthesised phosphopeptide derived from human MAP3K9/MAP3K10 around the phosphorylation site of Thr312/Thr266:AG(p-T)YA
<b>Lsotype:</b>	IgG
<b>Purification:</b>	affinity purified by Protein A
<b>Storage Buffer:</b>	0.01M TBS(pH7.4) with 1% BSA, 0.03% Proclin300 and 50% Glycerol.
<b>Storage:</b>	Store at -20 °C for one year. Avoid repeated freeze/thaw cycles. The lyophilized antibody is stable at room temperature for at least one month and for greater than a year

	when kept at -20°C. When reconstituted in sterile pH 7.4 0.01M PBS or diluent of antibody the antibody is stable for at least two weeks at 2-4 °C.
<b>PubMed:</b>	<a href="#">PubMed</a>
<b>Product Detail:</b>	<p>The protein encoded by this gene is a member of the serine/threonine kinase family. This kinase has been shown to activate MAPK8/JNK and MKK4/SEK1, and this kinase itself can be phosphorylated, and thus activated by JNK kinases. This kinase functions preferentially on the JNK signaling pathway, and is reported to be involved in nerve growth factor (NGF) induced neuronal apoptosis. [provided by RefSeq, Jul 2008].</p> <p><b>Function:</b> Serine/threonine kinase which acts as an essential component of the MAP kinase signal transduction pathway. Plays an important role in the cascades of cellular responses evoked by changes in the environment. Once activated, acts as an upstream activator of the MKK/JNK signal transduction cascade through the phosphorylation of MAP2K4/MKK4 and MAP2K7/MKK7 which in turn activate the JNKs. The MKK/JNK signaling pathway regulates stress response via activator protein-1 (JUN) and GATA4 transcription factors. Plays also a role in mitochondrial death signaling pathway, including the release cytochrome c, leading to apoptosis.</p> <p><b>Subunit:</b> Homodimer.</p> <p><b>Tissue Specificity:</b> Expressed in epithelial tumor cell lines of colonic, breast and esophageal origin.</p> <p><b>Post-translational modifications:</b> Autophosphorylation on serine and threonine residues within the activation loop plays a role in enzyme activation. Thr-312 is likely to be the main autophosphorylation site. Autophosphorylation also occurs on Thr-304 and Ser-308.</p> <p><b>DISEASE:</b> May play a role in esophageal cancer susceptibility and/or development.</p> <p><b>Similarity:</b> Belongs to the protein kinase superfamily. STE Ser/Thr protein kinase family. MAP kinase kinase kinase subfamily. Contains 1 protein kinase domain. Contains 1 SH3 domain.</p> <p><b>SWISS:</b> P80192</p> <p><b>Gene ID:</b> 4293</p> <p><b>Database links:</b></p>

[Entrez Gene: 4293](#) Human

[Entrez Gene: 4294](#) Human

[Entrez Gene: 269881](#) Mouse

[Entrez Gene: 338372](#) Mouse

[Omim: 600136](#) Human

[Omim: 600137](#) Human

[SwissProt: P80192](#) Human

[SwissProt: Q02779](#) Human

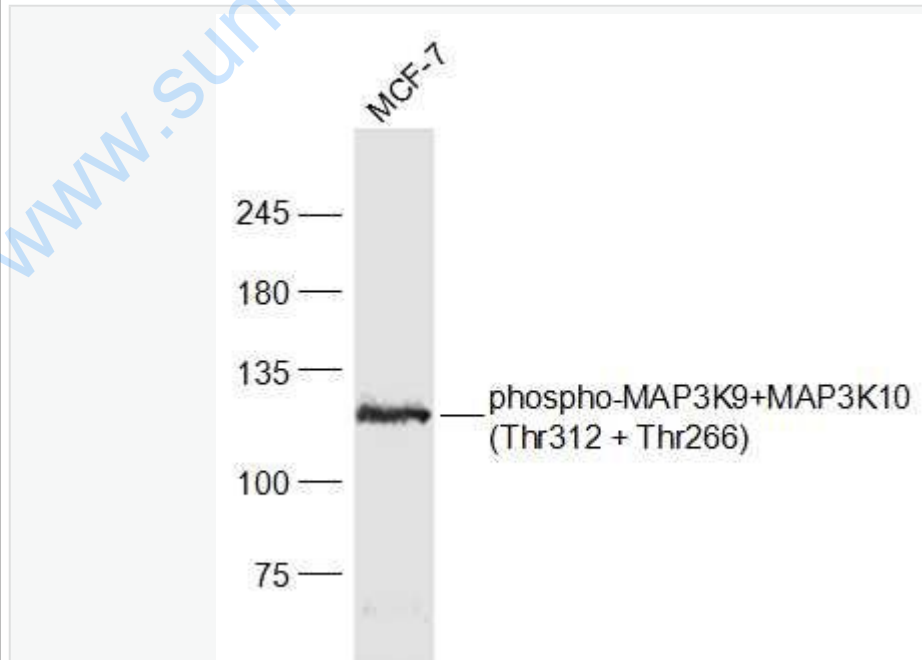
[SwissProt: Q3U1V8](#) Mouse

[SwissProt: Q66L42](#) Mouse

**Important Note:**

This product as supplied is intended for research use only, not for use in human, therapeutic or diagnostic applications.

**Picture:**



Sample:

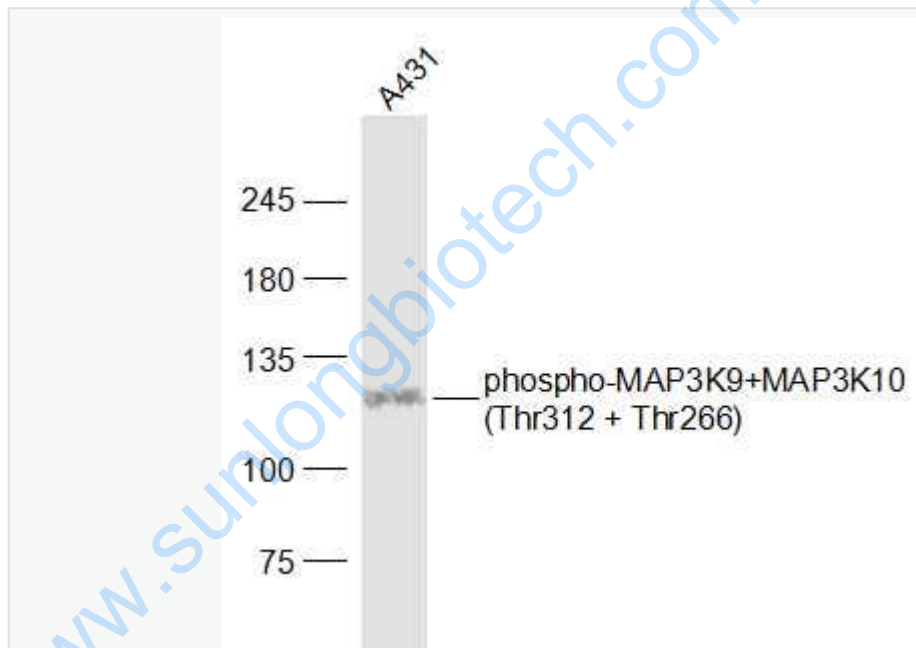
MCF-7(Human) Cell Lysate at 30 ug

Primary: Anti-phospho-MAP3K9+MAP3K10(Thr312 + Thr266) (SL6779R) at 1/1000 dilution

Secondary: IRDye800CW Goat Anti-Rabbit IgG at 1/20000 dilution

Predicted band size: 121/105 kD

Observed band size: 121 kD



Sample:

A431(Human) Cell Lysate at 30 ug

Primary: Anti-phospho-MAP3K9+MAP3K10(Thr312 + Thr266) (SL6779R) at 1/1000 dilution

Secondary: IRDye800CW Goat Anti-Rabbit IgG at 1/20000 dilution

Predicted band size: 121/105 kD

	Observed band size: 121 kD
--	----------------------------

[www.sunlongbiotech.com](http://www.sunlongbiotech.com)