



Rabbit Anti-Granzyme K antibody

SL6788R

Product Name:	Granzyme K
Chinese Name:	颗粒酶K抗体
Alias:	Fragmentin 3; Fragmentin-3; Fragmentin3; GRAK_HUMAN; Granzyme 3; Granzyme K; Granzyme K precursor; Granzyme-3; Granzyme3; GranzymeK; GZMK; NK TRYP 2; NK TRYP2; NK tryptase 2; NK-TRYP-2; NK-tryptase-2; NKTRYP2; Serine protease granzyme 3; TRYP 2; TRYP2; Tryptase II; TryptaseII.
Organism Species:	Rabbit
Clonality:	Polyclonal
React Species:	Human,Mouse,Rat,Horse,
Applications:	WB=1:500-2000ELISA=1:500-1000 not yet tested in other applications. optimal dilutions/concentrations should be determined by the end user.
Molecular weight:	26kDa
Cellular localization:	cytoplasmicSecretory protein
Form:	Lyophilized or Liquid
Concentration:	1mg/ml
immunogen:	KLH conjugated synthetic peptide derived from human Granzyme K:51-250/264
Lsotype:	IgG
Purification:	affinity purified by Protein A
Storage Buffer:	0.01M TBS(pH7.4) with 1% BSA, 0.03% Proclin300 and 50% Glycerol.
Storage:	Store at -20 °C for one year. Avoid repeated freeze/thaw cycles. The lyophilized antibody is stable at room temperature for at least one month and for greater than a year when kept at -20°C. When reconstituted in sterile pH 7.4 0.01M PBS or diluent of antibody the antibody is stable for at least two weeks at 2-4 °C.
PubMed:	PubMed
Product Detail:	This gene product is a member of a group of related serine proteases from the cytoplasmic granules of cytotoxic lymphocytes. Cytolytic T lymphocytes (CTL) and natural killer (NK) cells share the remarkable ability to recognize, bind, and lyse specific target cells. They are thought to protect their host by lysing cells bearing on their surface 'nonself' antigens, usually peptides or proteins resulting from infection by

intracellular pathogens. The protein described here lacks consensus sequences for N-glycosylation present in other granzymes. [provided by RefSeq, Jul 2008].

Subcellular Location:

Secreted. Cytoplasmic granule.

Tissue Specificity:

Expressed in lung, spleen, thymus and peripheral blood leukocytes.

Similarity:

Belongs to the peptidase S1 family. Granzyme subfamily.

Contains 1 peptidase S1 domain.

SWISS:

P49863

Gene ID:

3003

Database links:

[Entrez Gene: 3003](#)Human

[Entrez Gene: 14945](#)Mouse

[Entrez Gene: 29165](#)Rat

[Omin: 600784](#)Human

[SwissProt: P49863](#)Human

[SwissProt: O35205](#)Mouse

[SwissProt: P49864](#)Rat

[Unigene: 277937](#)Human

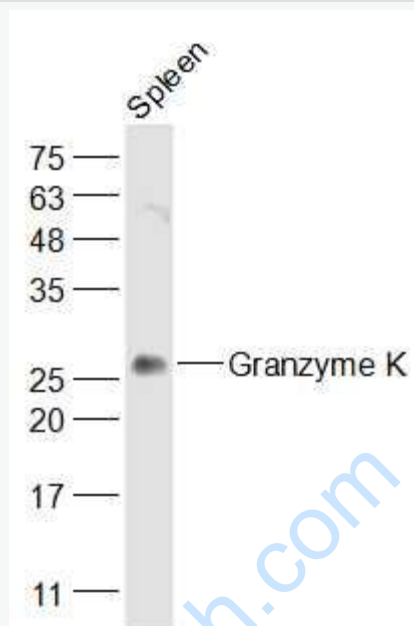
[Unigene: 56993](#)Mouse

[Unigene: 11190](#)Rat

Important Note:

This product as supplied is intended for research use only, not for use in human, therapeutic or diagnostic applications.

Picture:



Sample:

Spleen (Mouse) Lysate at 40 ug

Primary: Anti-Granzyme K (SL6788R) at 1/1000 dilution

Secondary: IRDye800CW Goat Anti-Rabbit IgG at 1/20000 dilution

Predicted band size: 26 kD

Observed band size: 26 kD