



## Rabbit Anti-CHAC1 antibody

SL6795R

<b>Product Name:</b>	CHAC1
<b>Chinese Name:</b>	阳离子转运调控样蛋白1抗体
<b>Alias:</b>	Cation transport regulator like protein 1; Cation transport regulator-like protein 1; ChaC; chac1; CHAC1_HUMAN.
<b>Organism Species:</b>	Rabbit
<b>Clonality:</b>	Polyclonal
<b>React Species:</b>	Human,Mouse,Rat,Dog,Pig,Cow,Rabbit,
<b>Applications:</b>	WB=1:500-2000ELISA=1:500-1000IHC-P=1:400-800IHC-F=1:400-800IF=1:100-500 (Paraffin sections need antigen repair) not yet tested in other applications. optimal dilutions/concentrations should be determined by the end user.
<b>Molecular weight:</b>	29kDa
<b>Cellular localization:</b>	cytoplasmic
<b>Form:</b>	Lyophilized or Liquid
<b>Concentration:</b>	1mg/ml
<b>immunogen:</b>	KLH conjugated synthetic peptide derived from human CHAC1:131-264/264
<b>Lsotype:</b>	IgG
<b>Purification:</b>	affinity purified by Protein A
<b>Storage Buffer:</b>	0.01M TBS(pH7.4) with 1% BSA, 0.03% Proclin300 and 50% Glycerol.
<b>Storage:</b>	Store at -20 °C for one year. Avoid repeated freeze/thaw cycles. The lyophilized antibody is stable at room temperature for at least one month and for greater than a year when kept at -20°C. When reconstituted in sterile pH 7.4 0.01M PBS or diluent of antibody the antibody is stable for at least two weeks at 2-4 °C.
<b>PubMed:</b>	<a href="#">PubMed</a>
<b>Product Detail:</b>	<p>Pro-apoptotic component of the unfolded protein response pathway. May mediate the pro-apoptotic effects of the ATF4-ATF3-DDIT3/CHOP cascade.</p> <p><b>Function:</b> Pro-apoptotic component of the unfolded protein response pathway. May mediate the pro-apoptotic effects of the ATF4-ATF3-DDIT3/CHOP cascade.</p>

**Subcellular Location:**

Cytoplasm, cytosol.

**Similarity:**

elongates to the chaC family.

**SWISS:**

Q9BUX1

**Gene ID:**

79094

**Database links:**

[Entrez Gene: 505991](#)Cow

[Entrez Gene: 79094](#)Human

[Entrez Gene: 69065](#)Mouse

[Entrez Gene: 362196](#)Rat

[GenBank: NP\\_077016](#)Human

[SwissProt: Q9BUX1](#)Human

[SwissProt: Q8R3J5](#)Mouse

[SwissProt: B3STU3](#)Rat

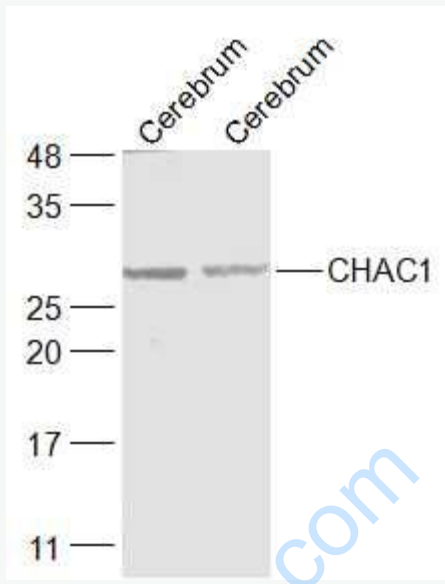
[Unigene: 155569](#)Human

[Unigene: 35083](#)Mouse

[Unigene: 23367](#)Rat

**Important Note:**

This product as supplied is intended for research use only, not for use in human, therapeutic or diagnostic applications.



**Picture:**

Sample:

Cerebrum (Mouse) Lysate at 40 ug

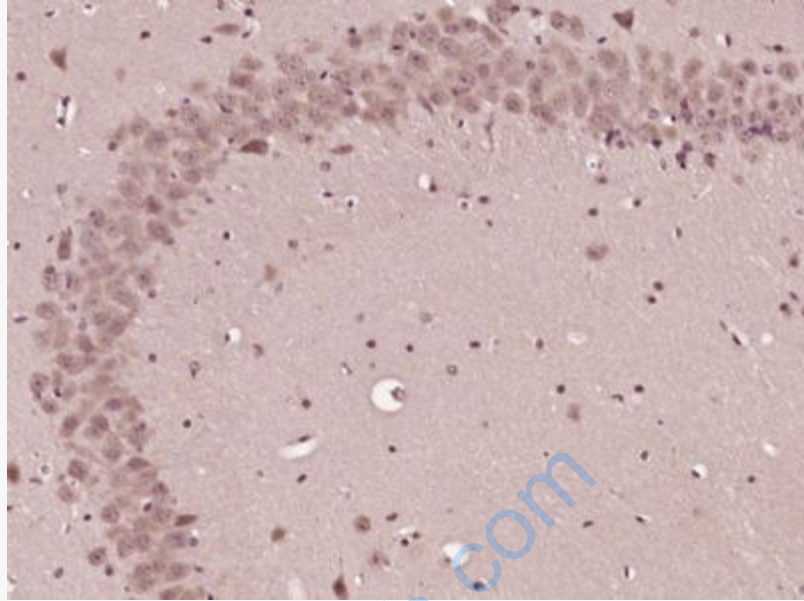
Cerebrum (Rat) Lysate at 40 ug

Primary: Anti-CHAC1 (SL6795R) at 1/1000 dilution

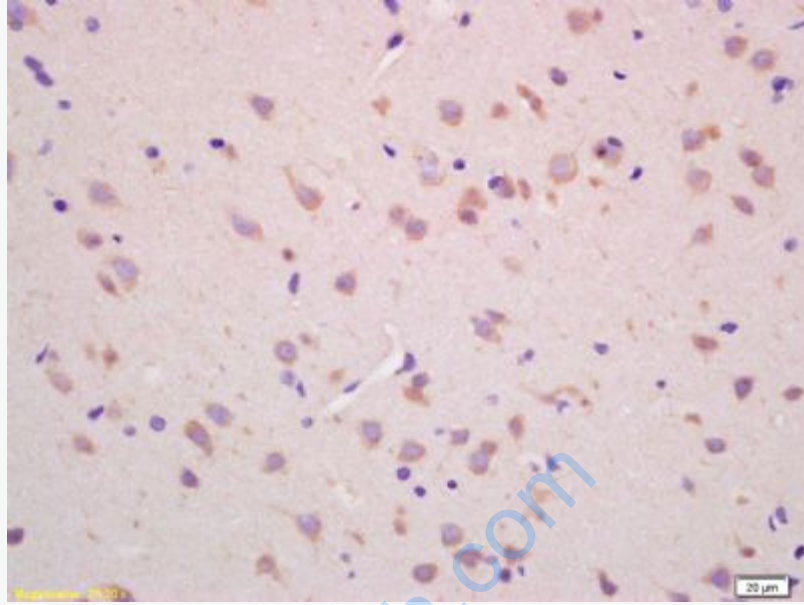
Secondary: IRDye800CW Goat Anti-Rabbit IgG at 1/20000 dilution

Predicted band size: 29 kD

Observed band size: 29 kD



Paraformaldehyde-fixed, paraffin embedded (Mouse brain); Antigen retrieval by boiling in sodium citrate buffer (pH6.0) for 15min; Block endogenous peroxidase by 3% hydrogen peroxide for 20 minutes; Blocking buffer (normal goat serum) at 37°C for 30min; Antibody incubation with (CHAC1) Polyclonal Antibody, Unconjugated (SL6795R) at 1:400 overnight at 4°C, followed by operating according to SP Kit(Rabbit) (sp-0023) instructions and DAB staining.



Tissue/cell: rat brain tissue; 4% Paraformaldehyde-fixed and paraffin-embedded;  
Antigen retrieval: citrate buffer ( 0.01M, pH 6.0 ), Boiling bathing for 15min; Block endogenous peroxidase by 3% Hydrogen peroxide for 30min; Blocking buffer (normal goat serum,C-0005) at 37°C for 20 min;  
Incubation: Anti-CHAC1 Polyclonal Antibody, Unconjugated(SL6795R) 1:200, overnight at 4°C, followed by conjugation to the secondary antibody(SP-0023) and DAB(C-0010) staining