



Rabbit Anti-TCERG1 antibody

SL6801R

Product Name:	TCERG1
Chinese Name:	转录延伸调节蛋白1抗体
Alias:	CA 150; Co activator of 150 kDa; Coactivator of 150 kDa; MGC133200; TAF 2S; TAF2S; TATA box binding protein (TBP) associated factor RNA polymerase II S 150kD; TATA box binding protein associated factor 2S; TATA box binding protein associated factor RNA polymerase II S 150kD; TCERG 1; TCERG1; Transcription elongation regulator 1; Transcription factor CA 150; Transcription factor CA150; TCRG1 HUMAN.
Organism Species:	Rabbit
Clonality:	Polyclonal
React Species:	Human,Mouse,Rat,Chicken,Dog,Pig,Cow,Horse,Rabbit,Sheep,
Applications:	WB=1:500-2000ELISA=1:500-1000IHC-P=1:400-800IHC-F=1:400-800IF=1:100-500 (Paraffin sections need antigen repair) not yet tested in other applications. optimal dilutions/concentrations should be determined by the end user.
Molecular weight:	124kDa
Cellular localization:	The nucleus
Form:	Lyophilized or Liquid
Concentration:	1mg/ml
immunogen:	KLH conjugated synthetic peptide derived from human TCERG1/CA150:701-800/1098
Lsotype:	IgG
Purification:	affinity purified by Protein A
Storage Buffer:	0.01M TBS(pH7.4) with 1% BSA, 0.03% Proclin300 and 50% Glycerol.
Storage:	Store at -20 °C for one year. Avoid repeated freeze/thaw cycles. The lyophilized antibody is stable at room temperature for at least one month and for greater than a year when kept at -20°C. When reconstituted in sterile pH 7.4 0.01M PBS or diluent of antibody the antibody is stable for at least two weeks at 2-4 °C.
PubMed:	PubMed
Product Detail:	CA150 is a nuclear protein that regulates transcriptional elongation and pre-mRNA splicing. It interacts with the hyperphosphorylated C-terminal domain of RNA

polymerase II via multiple FF domains, and with the pre-mRNA splicing factor SF1 via a WW domain.

Function:

Transcription factor that binds RNA polymerase II and inhibits the elongation of transcripts from target promoters. Regulates transcription elongation in a TATA box-dependent manner. Necessary for TAT-dependent activation of the human immunodeficiency virus type 1 (HIV-1) promoter.

Subunit:

Binds formin (By similarity). Binds RNA polymerase II, HD and SF1.

Subcellular Location:

Nucleus.

Tissue Specificity:

Detected in brain neurons.

Similarity:

Contains 6 FF domains.

SWISS:

O14776

Gene ID:

10915

Database links:

[Entrez Gene: 10915](#)Human

[Entrez Gene: 56070](#)Mouse

[Entrez Gene: 63838](#)Rat

[Omim: 605409](#)Human

[SwissProt: O14776](#)Human

[SwissProt: Q8CGF7](#)Mouse

[Unigene: 443465](#)Human

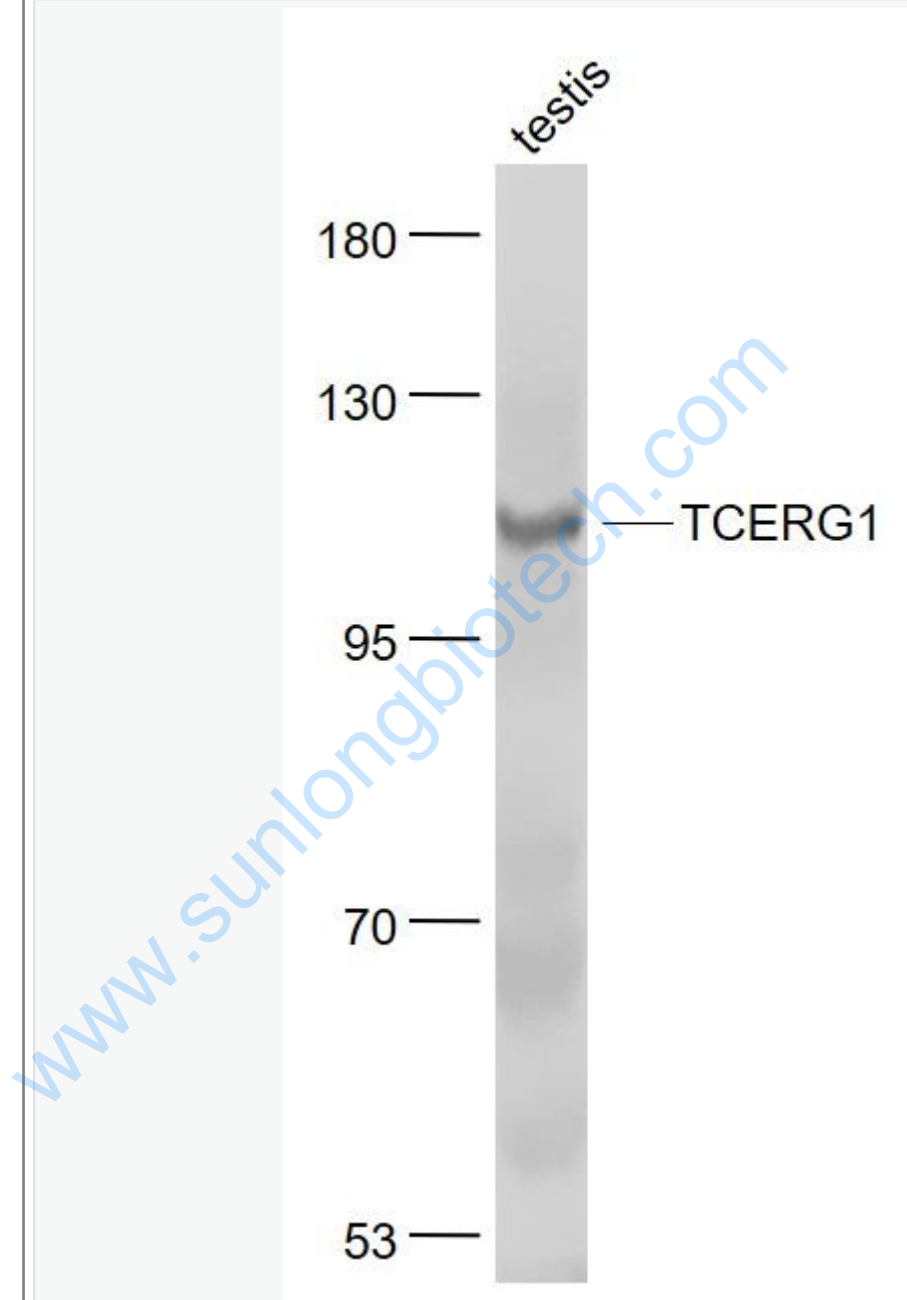
[Unigene: 723884](#)Human

[Unigene: 270511](#)Mouse

Important Note:

This product as supplied is intended for research use only, not for use in human, therapeutic or diagnostic applications.

Picture:



Sample:

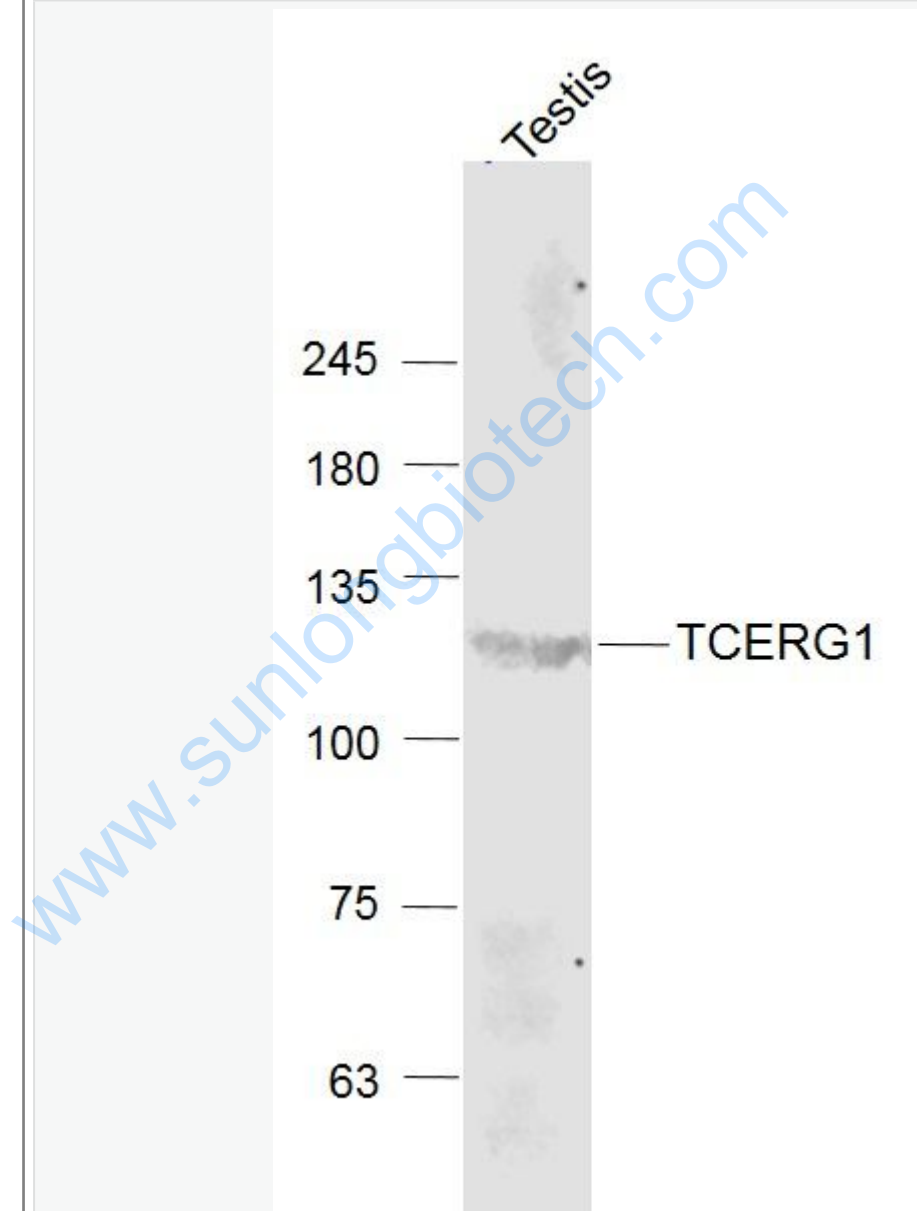
Testis (Mouse) Lysate at 40 ug

Primary: Anti- TCERG1 (SL6801R) at 1/1000 dilution

Secondary: IRDye800CW Goat Anti-Rabbit IgG at 1/20000 dilution

Predicted band size: 124 kD

Observed band size: 124 kD



Sample:

Testis(Mouse) Lysate at 40 ug

Primary: Anti-TCERG1 (SL6801R) at 1/1000 dilution

Secondary: IRDye800CW Goat Anti-Rabbit IgG at 1/20000 dilution

Predicted band size: 124 kD

Observed band size: 124kD

www.sunlongbiotech.com