



Rabbit Anti-CTAG1B antibody

SL6806R

Product Name:	CTAG1B
Chinese Name:	Tumour/睾丸抗原1B
Alias:	Autoimmunogenic cancer/testis antigen NY ESO 1; Autoimmunogenic cancer/testis antigen NY-ESO-1; Cancer antigen 3; Cancer/testis antigen 1; Cancer/testis antigen 1B; Cancer/testis antigen 6.1; CT6.1; CTAG 1; CTAG 1B; CTAG; CTAG1; CTAG1A; CTAG1B; CTG1B_HUMAN; ESO 1; ESO1; L antigen family member 2; LAGE 2; LAGE 2 protein; LAGE 2B; LAGE-2; LAGE2; LAGE2 protein; LAGE2A; LAGE2B; New York esophageal squamous cell carcinoma 1; NY ESO 1; NYESO 1; NYESO1.
Organism Species:	Rabbit
Clonality:	Polyclonal
React Species:	Human,
Applications:	ELISA=1:500-1000IHC-P=1:400-800IHC-F=1:400-800IF=1:100-500 (Paraffin sections need antigen repair) not yet tested in other applications. optimal dilutions/concentrations should be determined by the end user.
Molecular weight:	18kDa
Cellular localization:	cytoplasmic
Form:	Lyophilized or Liquid
Concentration:	1mg/ml
immunogen:	KLH conjugated synthetic peptide derived from human CTAG1B:101-180/180
Lsotype:	IgG
Purification:	affinity purified by Protein A
Storage Buffer:	0.01M TBS(pH7.4) with 1% BSA, 0.03% Proclin300 and 50% Glycerol.
Storage:	Store at -20 °C for one year. Avoid repeated freeze/thaw cycles. The lyophilized antibody is stable at room temperature for at least one month and for greater than a year when kept at -20°C. When reconstituted in sterile pH 7.4 0.01M PBS or diluent of antibody the antibody is stable for at least two weeks at 2-4 °C.
PubMed:	PubMed
Product Detail:	Expressed in testis and ovary and in a wide variety of cancers. Detected in uterine myometrium. Expressed from 18 weeks until birth in human fetal testis. In the adult

testis, is strongly expressed in spermatogonia and in primary spermatocytes, but not in post-meiotic cells or in testicular somatic cells (at protein level).

Subcellular Location:

Cytoplasm.

Tissue Specificity:

Expressed in testis and ovary and in a wide variety of cancers. Detected in uterine myometrium. Expressed from 18 weeks until birth in human fetal testis. In the adult testis, is strongly expressed in spermatogonia and in primary spermatocytes, but not in post-meiotic cells or in testicular somatic cells (at protein level).

Similarity:

The protein encoded by this gene is an antigen that is

SWISS:

P78358

Gene ID:

1485

Database links:

[Entrez Gene: 1485](#)Human

[Entrez Gene: 246100](#)Human

[Oimim: 300156](#)Human

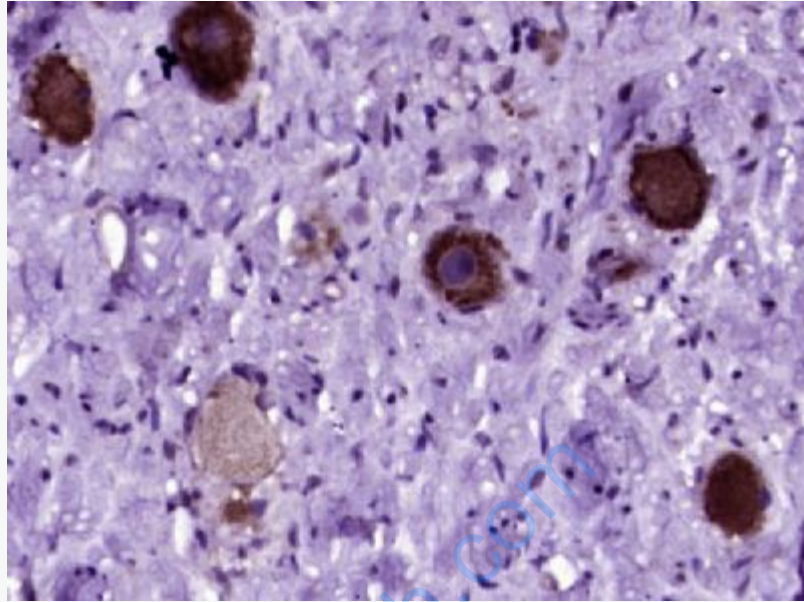
[SwissProt: P78358](#)Human

[Unigene: 534310](#)Human

[Unigene: 729551](#)Human

Important Note:

This product as supplied is intended for research use only, not for use in human, therapeutic or diagnostic applications.



Picture:

Paraformaldehyde-fixed, paraffin embedded (Human ovarian cancer); Antigen retrieval by boiling in sodium citrate buffer (pH6.0) for 15min; Block endogenous peroxidase by 3% hydrogen peroxide for 20 minutes; Blocking buffer (normal goat serum) at 37°C for 30min; Antibody incubation with (CTAG1B) Polyclonal Antibody, Unconjugated (SL6806R) at 1:400 overnight at 4°C, followed by operating according to SP Kit(Rabbit) (sp-0023) instructions and DAB staining.