



Rabbit Anti-CTAG2 antibody

SL6807R

Product Name:	CTAG2
Chinese Name:	Tumour/睾丸抗原2抗体
Alias:	Autoimmunogenic cancer/testis antigen NY ESO 2; Autoimmunogenic cancer/testis antigen NY-ESO-2; CAMEL; Cancer/testis antigen 2; Cancer/testis antigen 6.2; CT 2; CT2; CT6.2; CTAG 2; CTAG2; CTAG2_HUMAN; CTL recognized antigen on melanoma; ESO 2; ESO2; L antigen family member 1; LAGE 1; LAGE 1a protein; LAGE 2b; LAGE-1; LAGE1; LAGE2b.
Organism Species:	Rabbit
Clonality:	Polyclonal
React Species:	Human,
Applications:	WB=1:500-2000ELISA=1:500-1000 not yet tested in other applications. optimal dilutions/concentrations should be determined by the end user.
Molecular weight:	23kDa
Cellular localization:	cytoplasmic
Form:	Lyophilized or Liquid
Concentration:	1mg/ml
immunogen:	KLH conjugated synthetic peptide derived from human CTAG2:121-210/210
Lsotype:	IgG
Purification:	affinity purified by Protein A
Storage Buffer:	0.01M TBS(pH7.4) with 1% BSA, 0.03% Proclin300 and 50% Glycerol.
Storage:	Store at -20 °C for one year. Avoid repeated freeze/thaw cycles. The lyophilized antibody is stable at room temperature for at least one month and for greater than a year when kept at -20°C. When reconstituted in sterile pH 7.4 0.01M PBS or diluent of antibody the antibody is stable for at least two weeks at 2-4 °C.
PubMed:	PubMed
Product Detail:	Testis and very low level in placenta and in some uterus samples. Observed in 25-50% of tumor samples of melanomas, non-small-cell lung carcinomas, bladder, prostate and head and neck cancers.

Tissue Specificity:

Testis and very low level in placenta and in some uterus samples. Observed in 25-50% of tumor samples of melanomas, non-small-cell lung carcinomas, bladder, prostate and head and neck cancers.

Similarity:

Belongs to the CTAG family.

SWISS:

O75638

Gene ID:

30848

Database links:

[Entrez Gene: 30848](#)Human

[Omin: 300396](#)Human

[SwissProt: O75638](#)Human

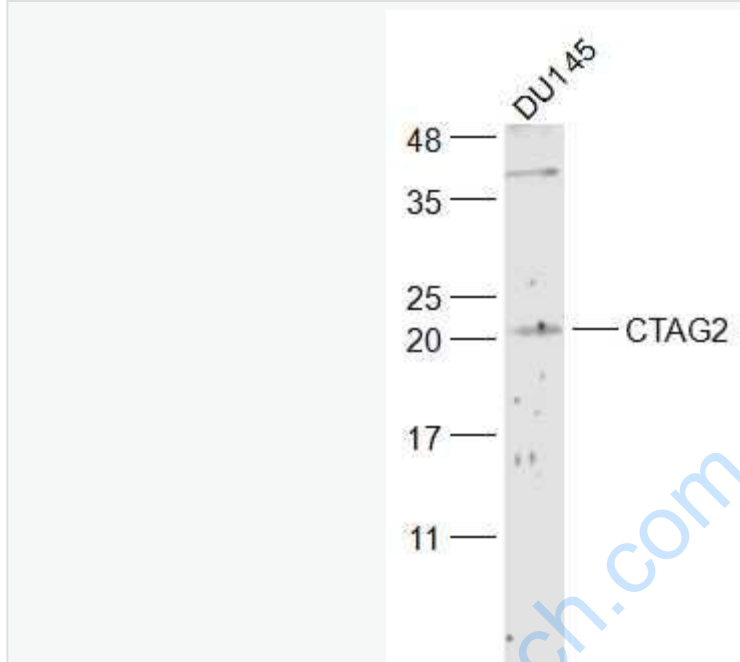
[Unigene: 87225](#)Human

Important Note:

This product as supplied is intended for research use only, not for use in human, therapeutic or diagnostic applications.

www.sunlongbiotech.com

Picture:



Sample:

DU145(Human) Cell Lysate at 30 ug

Primary: Anti-CTAG2 (SL6807R) at 1/300 dilution

Secondary: IRDye800CW Goat Anti-Rabbit IgG at 1/20000 dilution

Predicted band size: 23 kD

Observed band size: 21 kD