



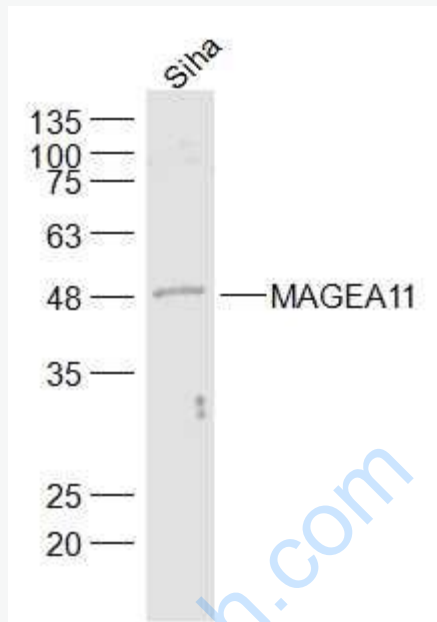
Rabbit Anti-MAGEA11 antibody

SL6817R

Product Name:	MAGEA11
Chinese Name:	黑色素瘤相关抗原11抗体
Alias:	Cancer/testis antigen 1.11; cancer/testis antigen family 1, member 11; CT1.11; MAGE 11; MAGE 11 antigen; MAGAB_HUMAN; MAGE11; MAGEA 11; Melanoma antigen family A 11; Melanoma associated antigen 11; MGC10511.
文献引用 PubMed :	<p>Specific References(1)SL6817R has been referenced in 1 publications.</p> <p>[IF=1.89]Choudhary, Meenakshi, et al. "Enhancing Lung Cancer Diagnosis: Electrochemical Simultaneous Bianalyte Immunosensing Using Carbon Nanotubes–Chitosan Nanocomposite." Applied Biochemistry and Biotechnology (2014): 1-13.other;</p> <p style="text-align: right;">PubMed:25024132</p>
Organism Species:	Rabbit
Clonality:	Polyclonal
React Species:	Human,
Applications:	WB=1:500-2000ELISA=1:500-1000IHC-P=1:400-800IHC-F=1:400-800IF=1:100-500 (Paraffin sections need antigen repair) not yet tested in other applications. optimal dilutions/concentrations should be determined by the end user.
Molecular weight:	48kDa
Cellular localization:	The nucleuscytoplasmic
Form:	Lyophilized or Liquid
Concentration:	1mg/ml
immunogen:	KLH conjugated synthetic peptide derived from human MAGEA11:12-120/429
Lsotype:	IgG
Purification:	affinity purified by Protein A
Storage Buffer:	0.01M TBS(pH7.4) with 1% BSA, 0.03% Proclin300 and 50% Glycerol.
Storage:	Store at -20 °C for one year. Avoid repeated freeze/thaw cycles. The lyophilized

	antibody is stable at room temperature for at least one month and for greater than a year when kept at -20°C. When reconstituted in sterile pH 7.4 0.01M PBS or diluent of antibody the antibody is stable for at least two weeks at 2-4 °C.
PubMed:	PubMed
Product Detail:	<p>MAGEA11 (Melanoma antigen family A, 11) is a member of the MAGEA gene family. MAGEA proteins are expressed in melanomas and other cancers. MAGEA11 acts as androgen receptor co-regulator increasing androgen receptor activity by modulating the receptors interdomain interaction.</p> <p>Function: Acts as androgen receptor co-regulator that increases androgen receptor activity by modulating the receptors interdomain interaction. May play a role in embryonal development and tumor transformation or aspects of tumor progression.</p> <p>Subcellular Location: Nucleus. Cytoplasm.</p> <p>Tissue Specificity: Expressed in tumors of several types, such as melanoma, head and neck squamous cell carcinoma, lung carcinoma and breast carcinoma. Expressed in testis, ovary, prostate, cancerous prostate, breast and adrenal tissue.</p> <p>Similarity: Contains 1 MAGE domain.</p> <p>SWISS: P43364</p> <p>Gene ID: 4110</p> <p>Database links: Entrez Gene: 4110Human Omim: 300344Human SwissProt: P43364Human Unigene: 670252Human</p> <p>Important Note: This product as supplied is intended for research use only, not for use in human, therapeutic or diagnostic applications.</p>

Picture:



Sample:

Siha(Human) Cell Lysate at 30 ug

Primary: Anti-MAGEA11 (SL6817R) at 1/500 dilution

Secondary: IRDye800CW Goat Anti-Rabbit IgG at 1/20000 dilution

Predicted band size: 48 kD

Observed band size: 48 kD