



## Rabbit Anti-MAGEA12 antibody

SL6818R

<b>Product Name:</b>	MAGEA12
<b>Chinese Name:</b>	黑色素瘤相关抗原12抗体
<b>Alias:</b>	Cancer/testis antigen 1.12; Cancer/testis antigen family 1 member 12; CT1.12; MAGAC_HUMAN; MAGE 12 antigen; MAGE-12 antigen; MAGE12; MAGE12 antigen; MAGE12F; MAGE12F antigen; MAGEA12; Melanoma antigen family A 12; Melanoma associated antigen 12; Melanoma-associated antigen 12.
<b>Organism Species:</b>	Rabbit
<b>Clonality:</b>	Polyclonal
<b>React Species:</b>	Human,
<b>Applications:</b>	ELISA=1:500-1000IHC-P=1:400-800IHC-F=1:400-800IF=1:100-500 (Paraffin sections need antigen repair) not yet tested in other applications. optimal dilutions/concentrations should be determined by the end user.
<b>Molecular weight:</b>	35kDa
<b>Cellular localization:</b>	The nucleuscytoplasmic
<b>Form:</b>	Lyophilized or Liquid
<b>Concentration:</b>	1mg/ml
<b>immunogen:</b>	KLH conjugated synthetic peptide derived from human MAGEA12:121-210/314
<b>Lsotype:</b>	IgG
<b>Purification:</b>	affinity purified by Protein A
<b>Storage Buffer:</b>	0.01M TBS(pH7.4) with 1% BSA, 0.03% Proclin300 and 50% Glycerol.
<b>Storage:</b>	Store at -20 °C for one year. Avoid repeated freeze/thaw cycles. The lyophilized antibody is stable at room temperature for at least one month and for greater than a year when kept at -20°C. When reconstituted in sterile pH 7.4 0.01M PBS or diluent of antibody the antibody is stable for at least two weeks at 2-4 °C.
<b>PubMed:</b>	<a href="#">PubMed</a>
<b>Product Detail:</b>	Not known, though may play a role in tumor transformation or aspects of tumor progression. Tissue specificity: Expressed in many tumors of several types, such as melanoma, head and neck squamous cell carcinoma, lung carcinoma and breast carcinoma, but not in normal tissues except for testes.

**Function:**

Not known, though may play a role in tumor transformation or aspects of tumor progression.

**Tissue Specificity:**

Expressed in many tumors of several types, such as melanoma, head and neck squamous cell carcinoma, lung carcinoma and breast carcinoma, but not in normal tissues except for testes.

**Similarity:**

Contains 1 MAGE domain.

**SWISS:**

P43365

**Gene ID:**

4111

**Database links:**

[Entrez Gene: 4111](#)Human

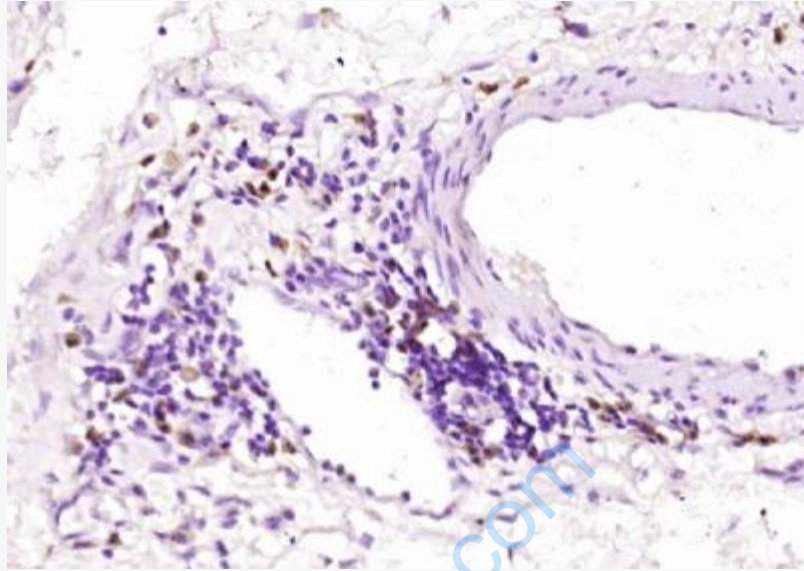
[Olim: 300177](#)Human

[SwissProt: P43365](#)Human

[Unigene: 169246](#)Human

**Important Note:**

This product as supplied is intended for research use only, not for use in human, therapeutic or diagnostic applications.



**Picture:**

Paraformaldehyde-fixed, paraffin embedded (Human esophageal cancer); Antigen retrieval by boiling in sodium citrate buffer (pH6.0) for 15min; Block endogenous peroxidase by 3% hydrogen peroxide for 20 minutes; Blocking buffer (normal goat serum) at 37°C for 30min; Antibody incubation with (MAGEA12) Polyclonal Antibody, Unconjugated (SL6818R) at 1:200 overnight at 4°C, followed by operating according to SP Kit(Rabbit) (sp-0023) instructions and DAB staining.